

HI-TACAN Z RWY 5L

TACAN NTU Chan 113	APCH CRS 043°	Rwy Idg 8000
		TDZE 20
		Arprt Elev 22

AL-934 [USN]

OCEANA NAS (APOLLO SOUCEK FLD) (KNTU)

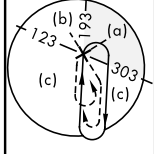
MISSED APPROACH: Climb to 3000 via R-223 to NTU TACAN and via R-064 to SKOUT and hold.

ATIS 317.6	APP/DEP CON 123.9 266.8	TOWER 127.075 360.2	GND CON 119.6 336.4	CLNC DEL 254.4	ASR/ PAR
---------------	----------------------------	------------------------	------------------------	-------------------	-------------

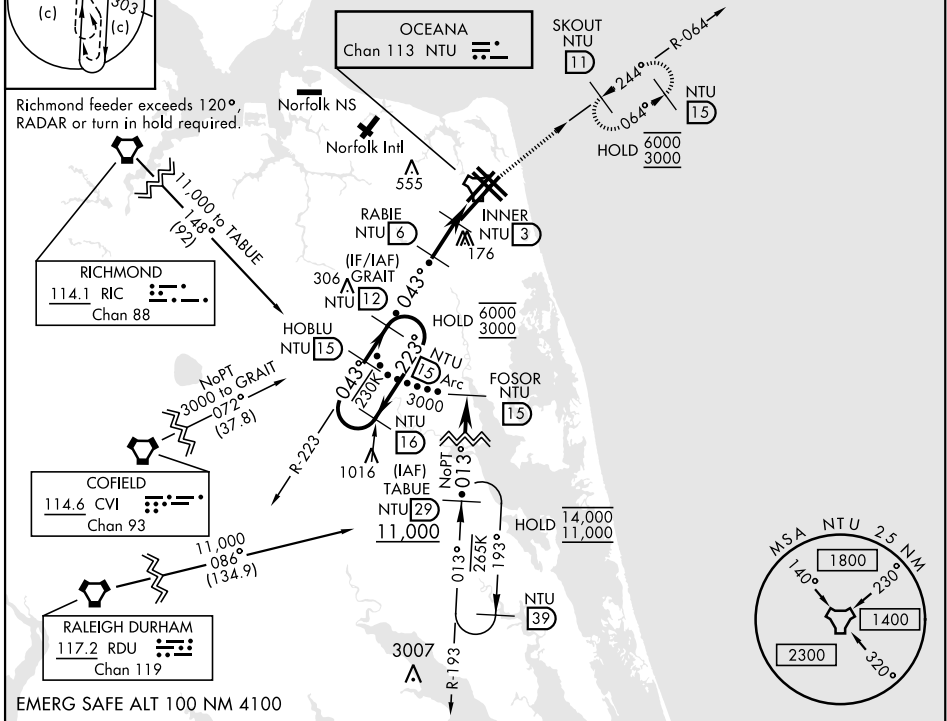
CAUTION: Final approach crs 17° from rwy cntrl at 3000' from thld.

Knots	60	120	180	240	300	360
V/V(fpm)	210	420	630	840	1050	1260

Min climb of 210 ft/NM to 3000 - Controlling Obstacle Unk



Richmond feeder exceeds 120° RADAR or turn in hold required.



NE-3, 20 FEB 2025 to 20 MAR 2025

NE-3, 20 FEB 2025 to 20 MAR 2025

	HOBLU NTU 15	GRAIT NTU 12	RABIE NTU 6	INNER NTU 3	TACAN	WEVKU NTU 1.3	ELEV 22	TDZE 20
	3000	3000	1600	740				
CATEGORY	C	D	E					
S-5L	420-1½	400 (400-1½)						
CIRCLING	600-1½ 578 (600-1½)	600-2 578 (600-2)	900-3 878 (900-3)					

HI-TACAN Z RWY 5L

HIRL all Rwy
Wave-Off Lgt all Rwy