

VIRGINIA BEACH, VIRGINIA

RNAV (GPS) RWY 23L

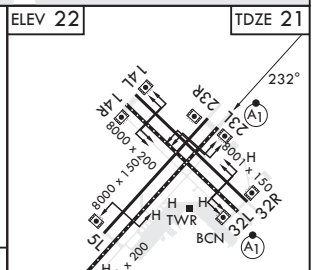
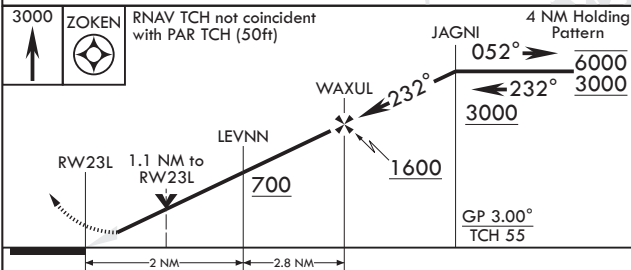
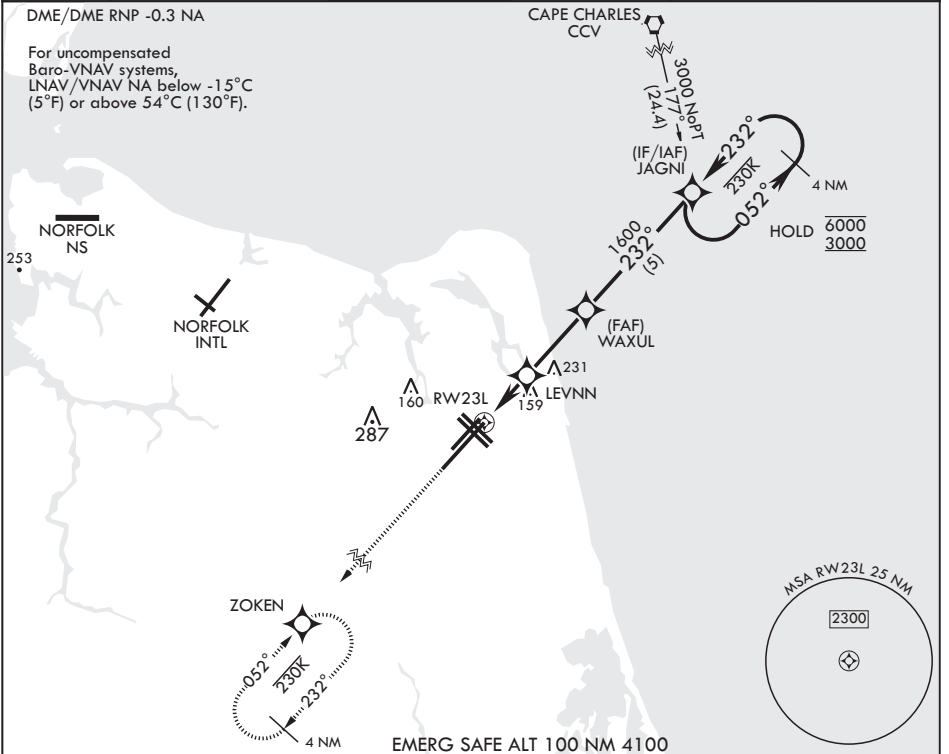
WAAS CH 67300 W23A	APCH CRS 232°	Rwy ldg TDZE 12,001 21	Arpt Elev 22
--------------------	---------------	------------------------	--------------

AL-934 (USN) OCEANA NAS (APOLLO SOUCEK FLD) (KNTU)

V * When ALS inop, increase vis to 3/4 mile.
 ** When ALS inop, increase vis to 7/8 mile.
 *** When ALS inop, increase CAT AB vis to 1 mile; CAT CD vis to 1 1/8 miles.

ALSF-1  MISSED APPROACH: Climb to 3000 direct ZOKEN and hold.

ATIS 317.6	APP CON/DEP CON 123.9 266.8	TOWER 127.075 360.2	GND CON 119.6 336.4	CLNC DEL 254.4	ASR/PAR
------------	-----------------------------	---------------------	---------------------	----------------	---------



CATEGORY	A	B	C	D
LPV DA*	221-1/2	200	(200-1/2)	
LNAV/VNAV DA**	324-1/2	303	(400-1/2)	
LNAV MDA***	420-1/2 399 (400-1/2)		420-5/8 399 (400-5/8)	
C CIRCLING	500-1 478 (500-1)		600-1 1/2 578 (600-1 1/2)	600-2 578 (600-2)

ELEV 22	TDZE 21
HIRL all Rwys Wave-Off Lights all Rwys	

VIRGINIA BEACH, VIRGINIA 36°49'N - 76°02'W OCEANA NAS (APOLLO SOUCEK FLD) (KNTU)

Amdt 4 27 JAN 22

RNAV (GPS) RWY 23L

NE-3, 20 FEB 2025 to 20 MAR 2025

NE-3, 20 FEB 2025 to 20 MAR 2025