

# RNAV (GPS) RWY 32L/R

AL-934 (USN) OCEANA NAS (APOLLO SOUCEK FLD) (KNTU)

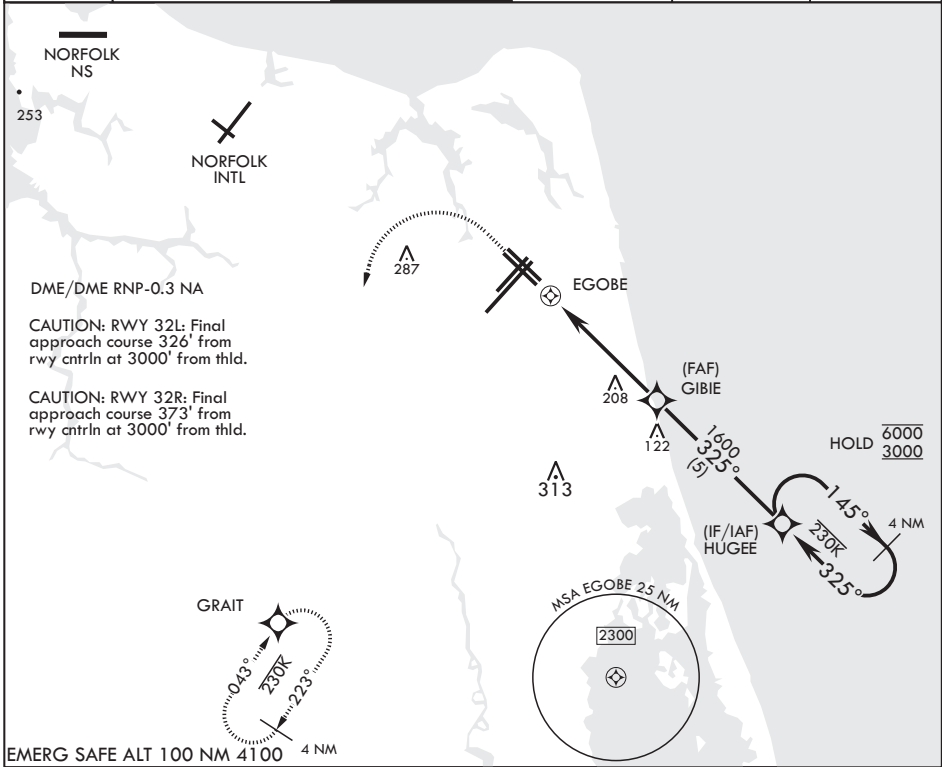
APCH CRS <b>325°</b>	Rwy Idg	<b>8000</b>	<b>8001</b>
	TDZE	<b>22</b>	<b>20</b>
	Arprt Elev	<b>22</b>	

**▽** \* When ALS inop increase CAT AB vis to 1 mile, CAT CD vis to 1 1/8 miles.

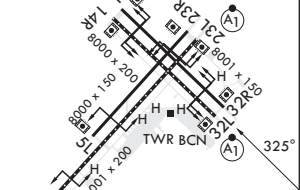
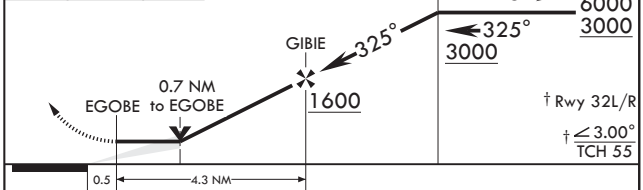
Rwy 32L  
ALSF-1

MISSED APPROACH: Climbing 1100 then climbing left turn to 3000 direct GRAIT and hold.

ATIS <b>317.6</b>	APP CON/DEP CON <b>123.9 266.8</b>	TOWER <b>127.075 360.2</b>	GND CON <b>119.6 336.4</b>	CLNC DEL <b>254.4</b>	ASR/PAR
----------------------	---------------------------------------	-------------------------------	-------------------------------	--------------------------	---------



1100 crs 325°	3000	GRAIT	RNAV TCH not coincident with PAR TCH (50ft).	4 NM Holding Pattern	ELEV 22	TDZE 32L 22 TDZE 32R 20
---------------	------	-------	--	----------------------	---------	----------------------------



CATEGORY	A	B	C	D
LNVA MDA	460-1	440 (500-1)	460-1¼	440 (500-1¼)
LNVA MDA*	460-½	438 (500-½)	460-¾	438 (500-¾)
✪ CIRCLING	500-1	478 (500-1)	600-1½ 578 (600-1½)	600-2 578 (600-2)

HIRL all Rwys  
Wave-Off Lights all Rwys

# RNAV (GPS) RWY 32L/R

NE-3, 20 FEB 2025 to 20 MAR 2025

NE-3, 20 FEB 2025 to 20 MAR 2025