

VIRGINIA BEACH, VIRGINIA

TACAN Y RWY 23L/R

TACAN NTU Chan 113	APCH CRS 244°	Rwy ldg 23L 12,001 23R 8000 TDZE 23L 21 23R 20 Arpt Elev 22
-----------------------	------------------	---

[USN]
OCEANA NAS (APOLLO SOUCEK FLD) (KNTU)

▲ * When ALS inop, increase CAT AB vis to 1 mile,
CAT CD vis to 1½ miles.



MISSED APPROACH: Climb to 3000 via R-064 to NTU TACAN and via R-223 to GRAIT and hold.

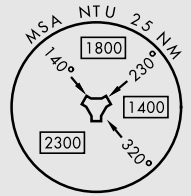
ATIS 317.6	APP/DEP CON 123.9 266.8	TOWER 127.075 360.2	GND CON 119.6 336.4	CLNC DEL 254.4	ASR/ PAR
---------------	----------------------------	------------------------	------------------------	-------------------	-------------

CAUTION: Rwy 23L final approach crs 209° from rwy ctrln at 3000' from thld.
Rwy 23R final approach crs 491° from rwy ctrln at 3000' from thld.

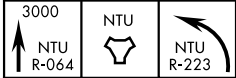
RICHMOND
114.1 RIC
Chan 88
11,000

CAPE CHARLES
112.2 CCV
Chan 59

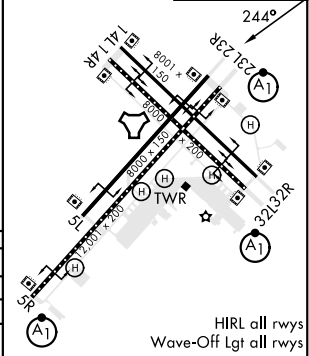
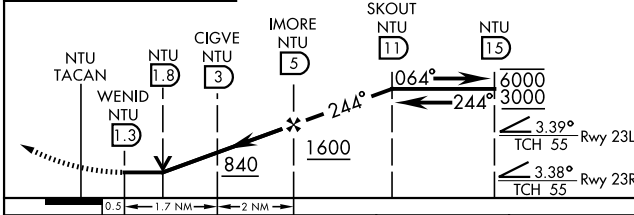
OCEANA
Chan 113 NTU



EMERG SAFE ALT 100 NM 4100



ELEV 22	TDZE 23L 21 TDZE 23R 20
---------	----------------------------



CATEGORY	A	B	C	D
S-23L *	440-½	419 (500-½)	440-¾	419 (500-¾)
S-23R	440-1	420 (500-1)	440-1⅛	420 (500-1⅛)
CIRCLING	500-1	478 (500-1)	600-1½ 578 (600-1½)	600-2 578 (600-2)

VIRGINIA BEACH, VIRGINIA

36° 49' N-76° 02' W

OCEANA NAS (APOLLO SOUCEK FLD) (KNTU)

Orig 27JAN22

TACAN Y RWY 23L/R

NE-3, 20 FEB 2025 to 20 MAR 2025

NE-3, 20 FEB 2025 to 20 MAR 2025

HIRL all rwy
Wave-Off Lgt all rwy