

# TACAN Y RWY 5L

TACAN NTU Chan 113	APCH CRS 043°	Rwy Idg 8000
		TDZE 20
		Arprt Elev 22

AL-934 [USN]

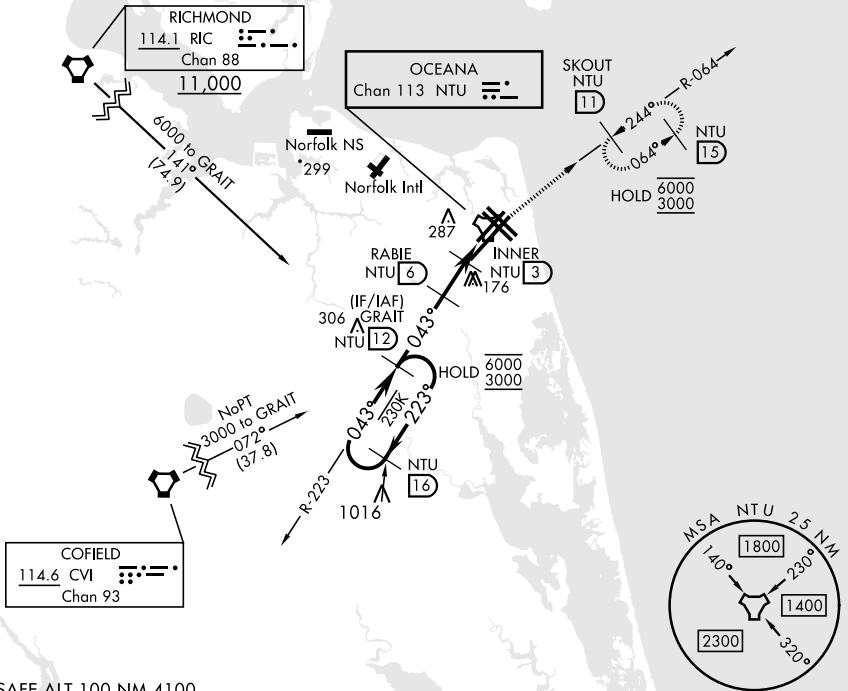
OCEANA NAS (APOLLO SOUCEK FLD) (KNTU)

**MISSED APPROACH:** Climb to 3000 via R-223 to NTU TACAN and via R-064 to SKOUT and hold.

ATIS <b>317.6</b>	APP/DEP CON <b>123.9 266.8</b>	TOWER <b>127.075 360.2</b>	GND CON <b>119.6 336.4</b>	CLNC DEL <b>254.4</b>	ASR/ PAR
----------------------	-----------------------------------	-------------------------------	-------------------------------	--------------------------	-------------

CAUTION: Final approach crs 17° from rwy cntrln at 3000' from thld.		Knots	60	120	180	240	300	360
		V/V(fpm)	210	420	630	840	1050	1260

Min climb of 210 ft/NM to 3000 - Controlling Obstacle Unk



EMERG SAFE ALT 100 NM 4100

	3000	NTU R-223	NTU	NTU R-064	ELEV 22	TDZE 20
	6000	GRAIT				
	3000					
			RABIE 6	INNER 3	TACAN	
			1600	740	WEVKU 1.3	
			←3 NM	←1.7	←0.7	
CATEGORY	A	B	C	D		
S-5L	420-1	400 (400-1)	420-1 1/8	400 (400-1 1/8)		
CIRCLING	500-1	478 (500-1)	600-1 1/2	578 (600-1 1/2)	600-2	578 (600-2)

# TACAN Y RWY 5L

NE-3, 20 FEB 2025 to 20 MAR 2025

NE-3, 20 FEB 2025 to 20 MAR 2025

HIRL all rwy's  
Wave-Off Lgt all rwy's