

VIRGINIA BEACH, VIRGINIA

TACAN Y RWY 5R

TACAN NTU Chan 113	APCH CRS 043°	Rwy Idg 12,001	TDZE 19	Arprt Elev 22
-----------------------	------------------	-------------------	------------	------------------

[USN]

OCEANA NAS (APOLLO SOUCEK FLD) (KNTU)

▼ * When ALS inop, increase CAT AB vis to 1 mile, CAT CD vis to 1½ miles.

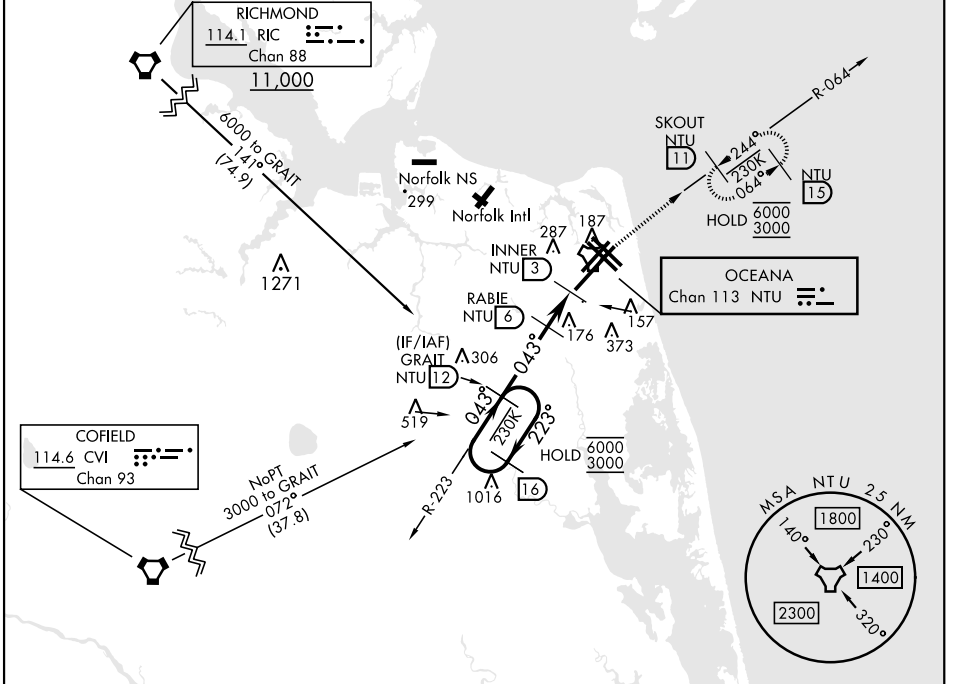


MISSED APPROACH: Climb to 3000 via R-223 to NTU TACAN and via R-064 to SKOUT and hold.

ATIS 317.6	APP/DEP CON 123.9 266.8	TOWER 127.075 360.2	GND CON 119.6 336.4	CLNC DEL 254.4	ASR/ PAR
---------------	----------------------------	------------------------	------------------------	-------------------	-------------

CAUTION: Final approach course 72° from rwy cntrln at 3000' from thld.

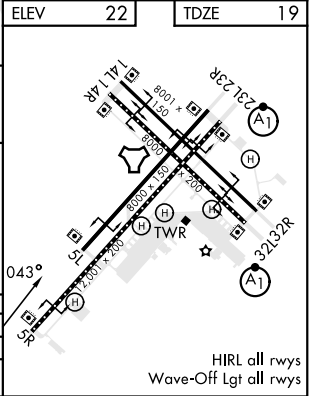
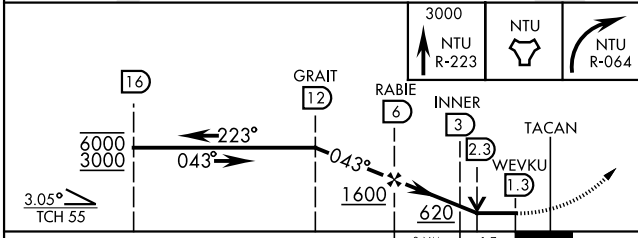
Knots	60	120	180	240	300	360
V/V(fpm)	210	420	630	840	1050	1260
Min climb of 210 ft/NM to 3000 - Controlling Obstacle Unk						



NE-3, 20 FEB 2025 to 20 MAR 2025

NE-3, 20 FEB 2025 to 20 MAR 2025

ELEV	22	TDZE	19
------	----	------	----



CATEGORY	A	B	C	D
S-5R *	420-½	401 (400-½)	420-¾ 401 (400-¾)	
CIRCLING	500-1	478 (500-1)	600-1½ 578 (600-1½)	600-2 578 (600-2)

VIRGINIA BEACH, VIRGINIA

36° 49' N-76° 02' W

OCEANA NAS (APOLLO SOUCEK FLD) (KNTU)

Orig 27JAN22

TACAN Y RWY 5R

HIRL all rwy's
Wave-Off Lgt all rwy's