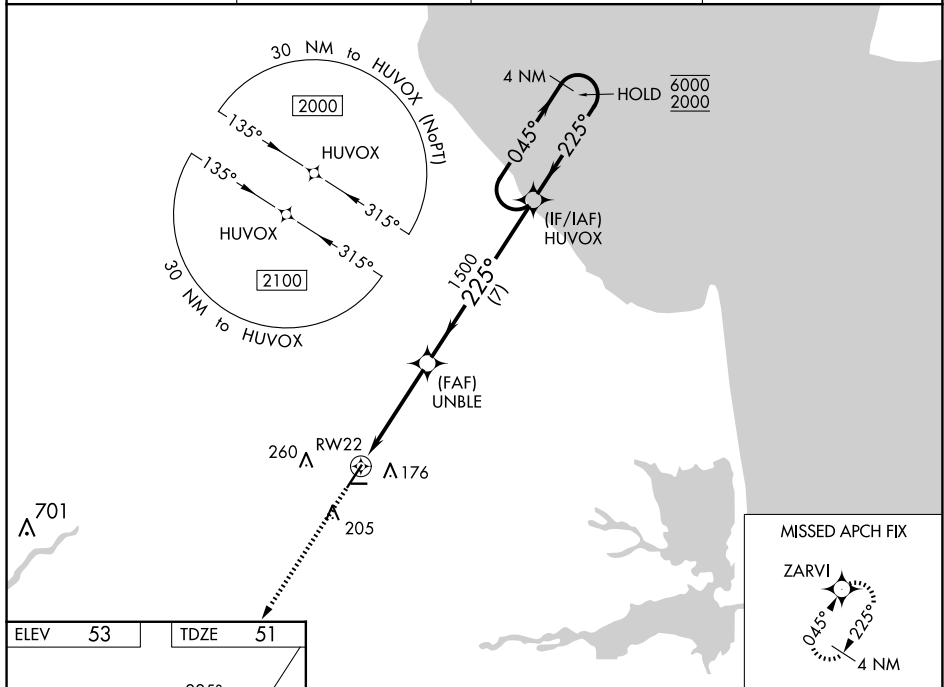


WAAS CH <b>60921</b> <b>W22A</b>	APP CRS <b>225°</b>	Rwy Idg TDZE Apt Elev	<b>5331</b> <b>51</b> <b>53</b>
--	------------------------	-----------------------------	---------------------------------------

# RNAV (GPS) RWY 22

DELAWARE COASTAL (GED)

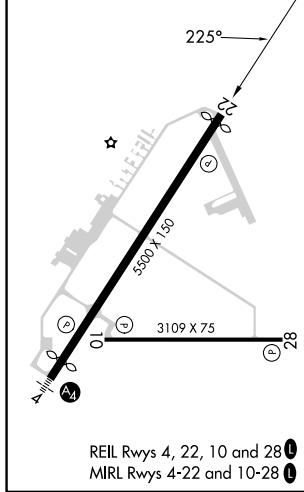
RNP APCH.		MISSED APPROACH: Climb to 2000 direct ZARVI and hold.	
ASOS <b>118.375</b>	DOVER APP CON <b>132.425 257.875</b>	GCO <b>125.55</b>	UNICOM <b>123.0 (CTAF)</b>



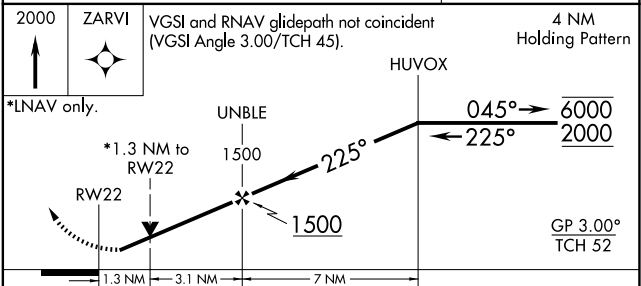
NE-3, 20 FEB 2025 to 20 MAR 2025

NE-3, 20 FEB 2025 to 20 MAR 2025

ELEV 53	TDZE 51
---------	---------



REIL Rwy 4, 22, 10 and 28  
MIRL Rwy 4-22 and 10-28



CATEGORY	A	B	C	D
LPV DA		321-7/8	270 (300-7/8)	
LNAV/VNAV DA		446-1 1/8	395 (400-1 1/8)	
LNAV MDA	500-1	449 (500-1)	500-1 1/8	449 (500-1 1/8)
<input checked="" type="checkbox"/> CIRCLING	560-1 507 (600-1)	580-1 527 (600-1)	720-1 3/4 667 (700-1 3/4)	720-2 667 (700-2)