

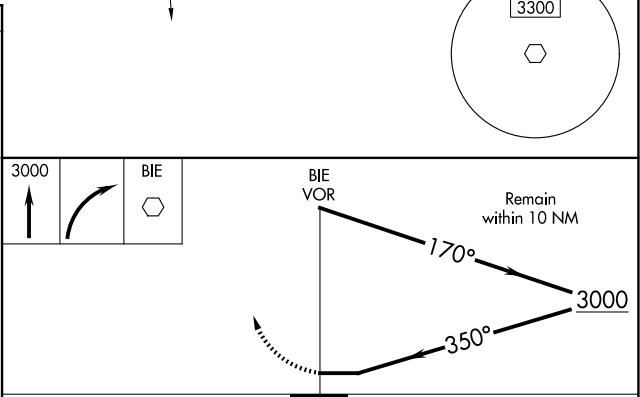
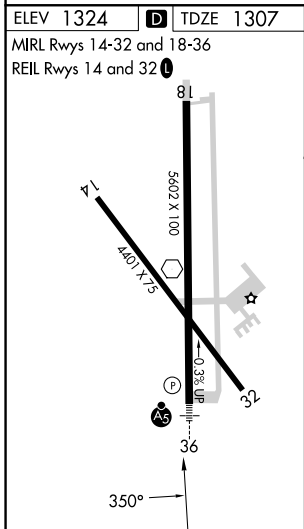
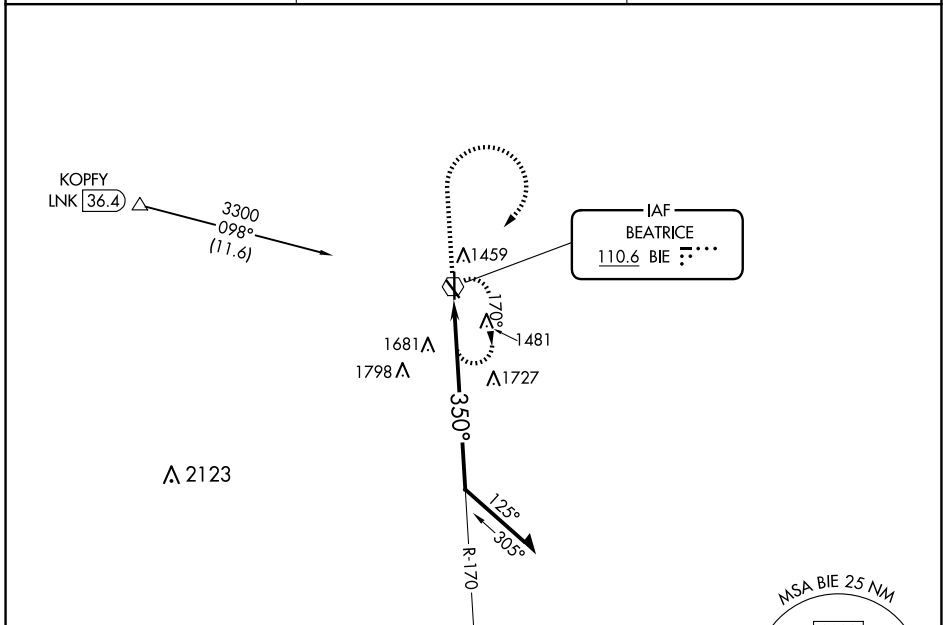
VOR BIE 110.6	APP CRS 350°	Rwy Idg TDZE Apt Elev	5602 1307 1324
-------------------------	------------------------	-----------------------------	---

VOR RWY 36

BEATRICE MUNI (BIE)

DME required for procedure entry.		MALSR 	MISSED APPROACH: Climb to 3000 then right turn direct BIE VOR and hold.
For inop ALS, increase S-36 Cats A/B visibility to 1 SM and Cats C/D visibility to 2 SM.			

AWOS-3 125.325	MINNEAPOLIS CENTER 126.4 317.7	UNICOM 122.8 (CTAF)
--------------------------	--	-------------------------------



CATEGORY	A	B	C	D
S-36	2040-3/4	733 (800-3/4)	2040-1 5/8	733 (800-1 5/8)
C CIRCLING	2040-1	716 (800-1)	2040-2 716 (800-2)	2100-2 1/2 776 (800-2 1/2)

NC-2, 20 FEB 2025 to 20 MAR 2025

NC-2, 20 FEB 2025 to 20 MAR 2025

