

|  |                        |                             |   |
|--|------------------------|-----------------------------|---|
| WAAS<br>CH <b>69217</b><br><b>W04A</b> | APP CRS<br><b>044°</b> | Rwy Idg<br>TDZE<br>Apt Elev | <b>7701</b><br><b>889</b><br><b>913</b> |
|--|------------------------|-----------------------------|---|

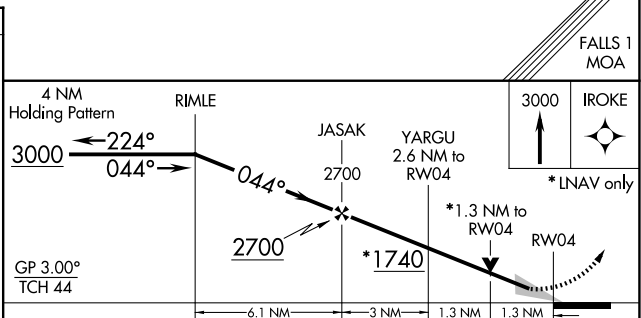
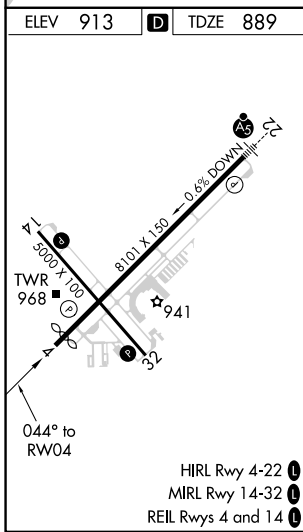
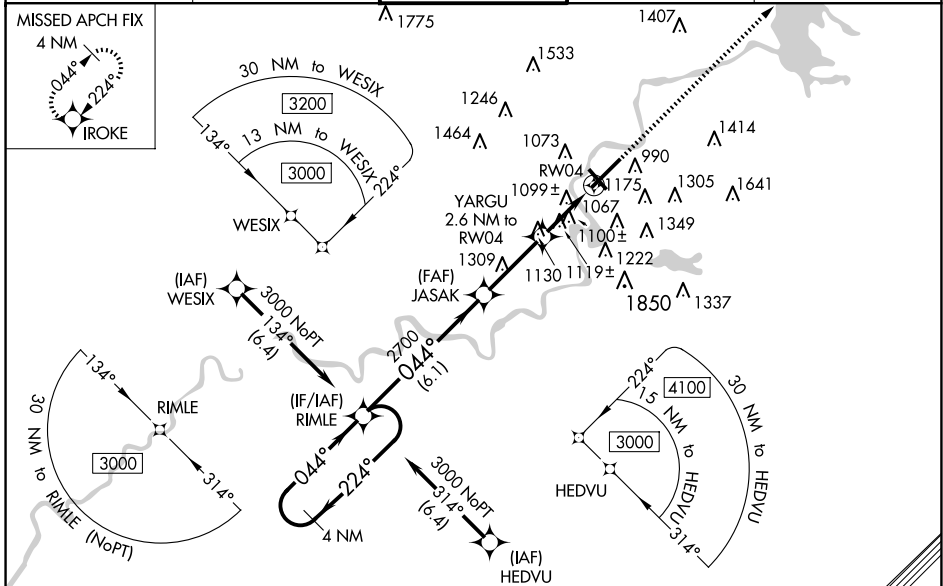
# RNAV (GPS) RWY 4

CHIPPEWA VALLEY RGNL (EAU)

**⚠** For uncompensated Baro-VNAV systems, LNAV/VNAV NA below -21°C (-5°F) or above 54°C (130°F). Baro-VNAV and VDP NA when using Rice Lake Rgnl/Carl's Fld altimeter setting. DME/DME RNP-0.3 NA. When local altimeter setting not received, use Rice Lake Rgnl/Carl's Fld altimeter setting and increase LPV DA to 1199, LNAV/VNAV DA to 1489 and all visibilities  $\frac{7}{8}$  SM. Increase all MDA 120 feet and LNAV Cat C/D and Circling Cat C visibility  $\frac{1}{4}$  SM. Circling Rwy 32 NA at night.

MISSED APPROACH:  
Climb to 3000 direct IROKE and hold.

|                        |  |  |                           |                         |
|------------------------|--|--|---------------------------|-------------------------|
| ATIS<br><b>126.025</b> | MINNEAPOLIS CENTER<br><b>125.3 335.6</b> | EAU CLAIRE TOWER*<br><b>118.575 (CTAF) 0</b> | GND CON<br><b>120.925</b> | UNICOM<br><b>122.95</b> |
|------------------------|--|--|---------------------------|-------------------------|



| CATEGORY          | A                     | B                     | C  | D                          |
|-------------------|-----------------------|-----------------------|--|----------------------------|
| LPV DA            |                       | 1089- $\frac{3}{4}$   | 200 (200- $\frac{3}{4}$ )                          |                            |
| LNAV/VNAV DA      |                       | 1379-1 $\frac{5}{8}$  | 490 (500-1 $\frac{5}{8}$ )                         |                            |
| LNAV MDA          | 1360-1                | 471 (500-1)           | 1360-1 $\frac{3}{8}$                               | 471 (500-1 $\frac{3}{8}$ ) |
| <b>C</b> CIRCLING | 1480-1<br>567 (600-1) | 1540-1<br>627 (700-1) | 1660-2 $\frac{1}{4}$<br>747 (800-2 $\frac{1}{4}$ ) | 2200-3<br>1287 (1300-3)    |

EC-3, 20 FEB 2025 to 20 MAR 2025

EC-3, 20 FEB 2025 to 20 MAR 2025