

LOC I-JVL <b>109.1</b>	APP CRS <b>044°</b>	Rwy ldg <b>6701</b>
		TDZE <b>806</b>
		Apt Elev <b>808</b>

# ILS or LOC RWY 4

SOUTHERN WISCONSIN RGNL (JVL)

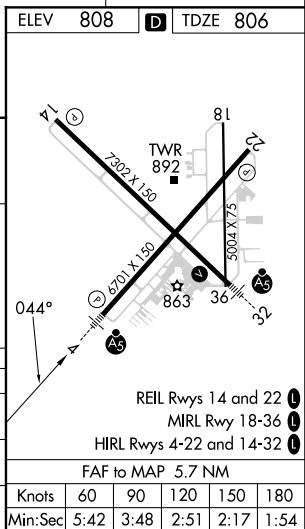
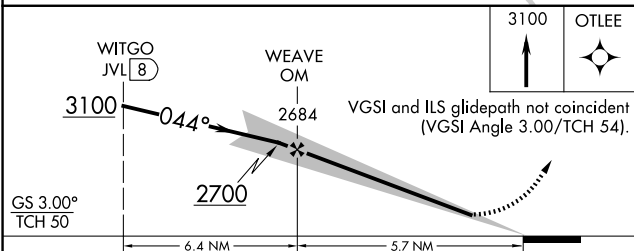
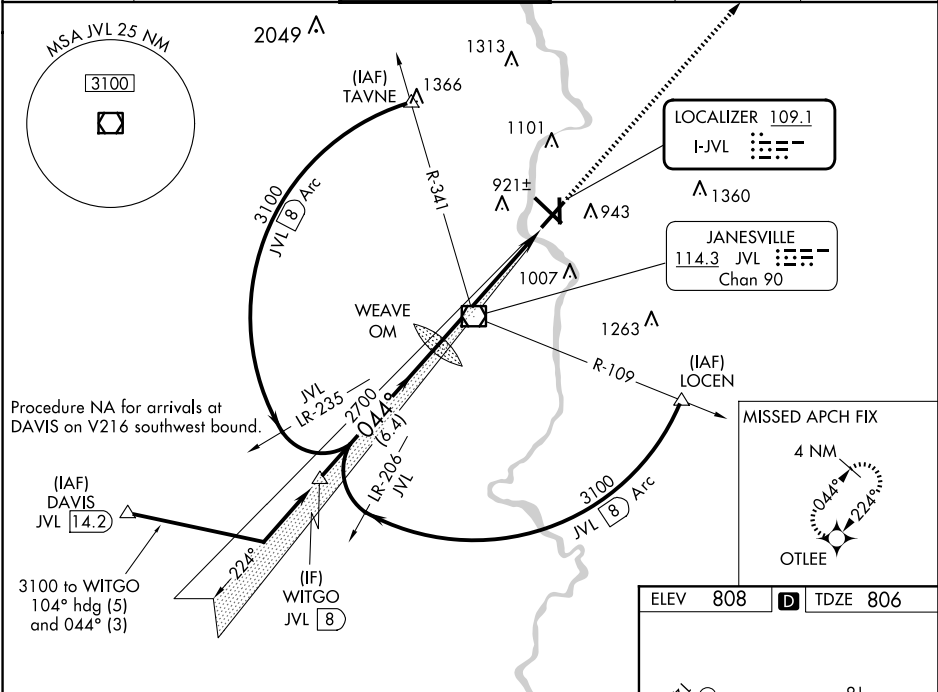
DME required. RNP APCH - GPS.

⚠ When local altimeter setting not received, use Rockford altimeter setting and increase DA 69 feet and all MDAs 80 feet; increase S-LOC 4 Cats C/D and Circling Cats C/D ¼ SM. For inop ALS when using Rockford altimeter setting; increase S-ILS 4 all Cats visibility to ¾ SM and S-LOC 4 Cats C/D visibility to 1 ½ SM. Circling Rwy 18 NA at night. DME from JVL VOR/DME. DME use requires simultaneous reception of I-JVL and JVL VOR/DME.



MISSED APPROACH:  
Climb to 3100 direct  
OTLEE and hold.

ATIS <b>128.25</b>	ROCKFORD APP CON <b>121.0 327.0</b>	JANESVILLE TOWER ★ <b>118.8(CTAF) 225.4</b>	GND CON <b>121.65</b>	CLNC DEL <b>121.65</b>	UNICOM <b>122.95</b>
-----------------------	--	--	--------------------------	---------------------------	-------------------------



CATEGORY	A	B	C	D
S-ILS 4		1006-½	200 (200-½)	
S-LOC 4	1400-½	594 (600-½)	1400-1 594 (600-1)	1400-1¼ 594 (600-1¼)
CIRCLING	1400-1	592 (600-1)	1420-1¾ 612 (700-1¾)	1460-2 652 (700-2)

EC-3, 20 FEB 2025 to 20 MAR 2025

EC-3, 20 FEB 2025 to 20 MAR 2025