

|  |                        |   |             |
|--|------------------------|---|-------------|
| WAAS<br>CH <b>82617</b><br><b>W04A</b> | APP CRS<br><b>043°</b> | Rwy Idg<br>TDZE <b>806</b><br>Apt Elev <b>808</b> | <b>6701</b> |
|--|------------------------|---|-------------|

# RNAV (GPS) RWY 4

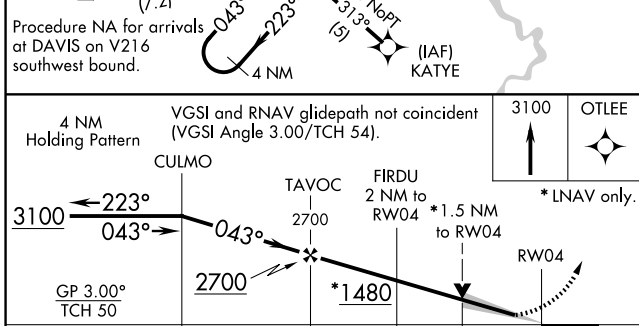
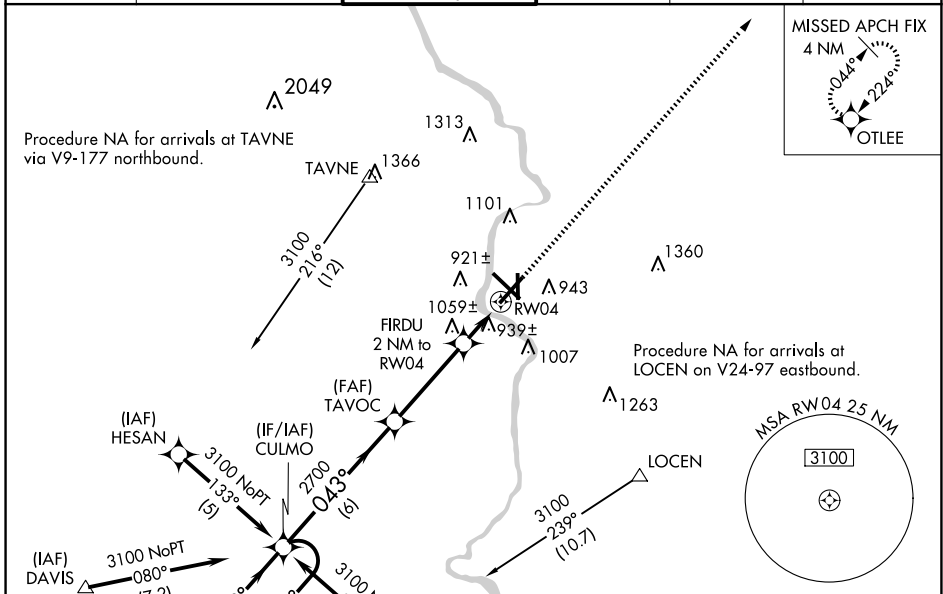
SOUTHERN WISCONSIN RGNL (JVL)

**⚠** Circling to Rwy 18 NA at night. Baro-VNAV NA when using Rockford altimeter setting. For uncompensated Baro-VNAV systems, LNAV/VNAV NA below -1.6°C (4°F) or above 47°C (116°F). DME/DME RNP-0.3 NA. VDP NA with Rockford altimeter setting. When local altimeter setting not received, use Rockford altimeter setting and increase LPV DA to 1075 feet, LNAV/VNAV DA to 1314 feet and all MDAs 80 feet; increase LNAV Cat C and Circling Cats C/D visibility ¼ SM. For inop ALS, when using Rockford altimeter setting increase LPV all Cats visibility to ½ SM and LNAV/VNAV all Cats visibility to 1/8 SM.

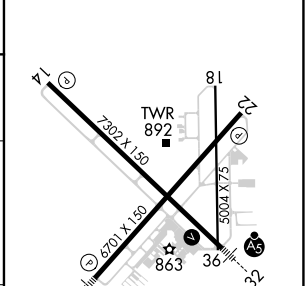
**MALSR**

**MISSED APPROACH:**  
Climb to 3100 direct  
OTLEE and hold.

|                       |  |   |                          |                           |                         |
|-----------------------|--|---|--------------------------|---------------------------|-------------------------|
| ATIS<br><b>128.25</b> | ROCKFORD APP CON<br><b>121.0 327.0</b> | JANESVILLE TOWER ★<br><b>118.8 (CTAF) 0 225.4</b> | GND CON<br><b>121.65</b> | CLNC DEL<br><b>121.65</b> | UNICOM<br><b>122.95</b> |
|-----------------------|--|---|--------------------------|---------------------------|-------------------------|



|          |                   |
|----------|-------------------|
| ELEV 808 | <b>D</b> TDZE 806 |
|----------|-------------------|



| CATEGORY     | A                      | B                      | C                    | D                    |
|--------------|------------------------|------------------------|----------------------|----------------------|
| LPV DA       |                        | 1006-1/2               | 200 (200-1/2)        |                      |
| LNAV/VNAV DA |                        | 1245-1                 | 439 (500-1)          |                      |
| LNAV MDA     | 1320-1/2 514 (600-1/2) | 1320-1 514 (600-1)     | 1320-1 514 (600-1/4) | 1320-1 514 (600-1/4) |
| CIRCLING     | 1320-1 512 (600-1)     | 1420-1 612 (700-1 3/4) | 1460-2 652 (700-2)   |                      |

REIL Rwy 14 and 22 **Ⓚ**  
MIRL Rwy 18-36 **Ⓚ**  
HIRL Rwy 4-22 and 14-32 **Ⓚ**

EC-3, 20 FEB 2025 to 20 MAR 2025

EC-3, 20 FEB 2025 to 20 MAR 2025