

APP CRS	Rwy Idg	8500
276°	TDZE	142
	Apt Elev	142

RNAV (RNP) Z RWY 28

LAKELAND LINDER INTL (LAL)

RNP AR APCH - GPS.

For uncompensated Baro-VNAV systems, procedure NA below -15°C or above 54°C.

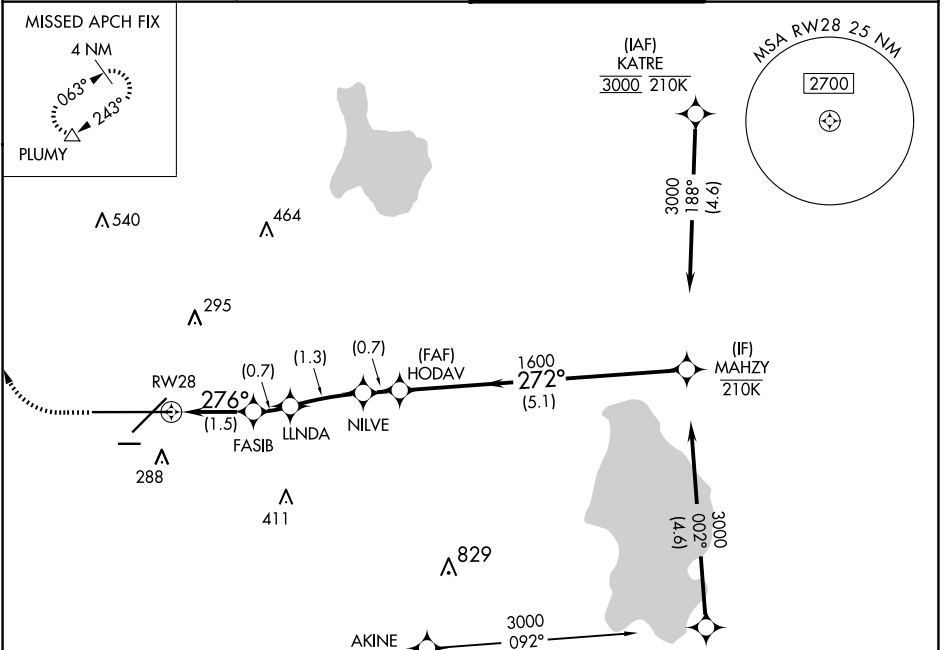
MISSED APPROACH: Climb to 600 then climbing right turn to 2000 direct PLUMY and hold.

ATIS
118.025

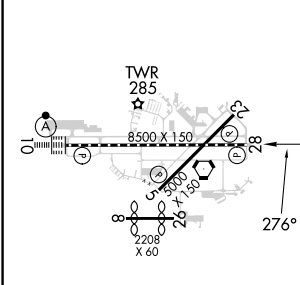
TAMPA APP CON
120.65 290.3

LAKELAND TOWER
124.5 236.775

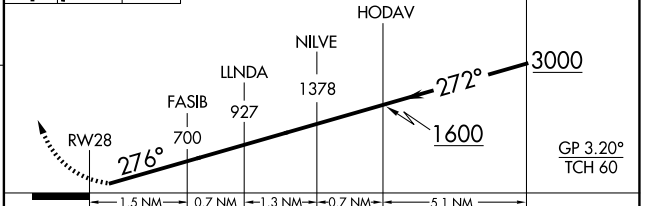
GND CON
121.4



ELEV 142	D	TDZE 142
----------	----------	----------



600 2000 PLUMY
 ↑ ↘ △
 VGSi and RNAV glidepath not coincident (VGSi Angle 3.00/TCH 71).



CATEGORY	A	B	C	D
RNP 0.30 DA	507/55 365 (400-1)			

AUTHORIZATION REQUIRED