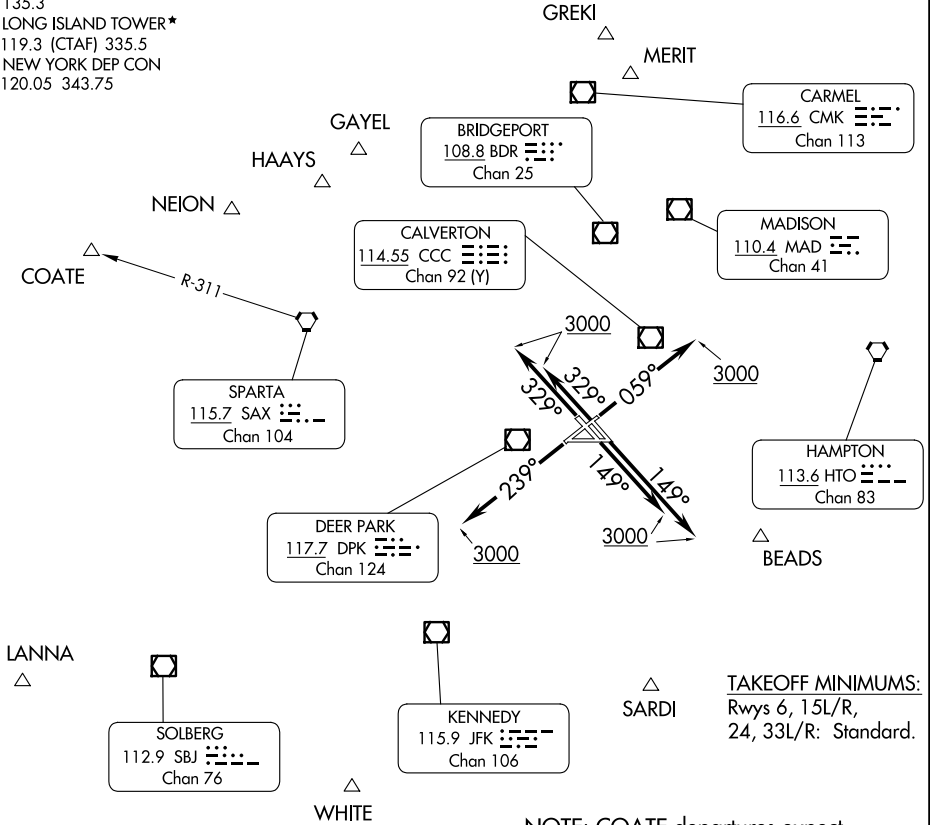


LONG ISLAND SEVEN DEPARTURE

ATIS 120.725
CLNC DEL
121.85
GND CON
135.3
LONG ISLAND TOWER*
119.3 (CTAF) 335.5
NEW YORK DEP CON
120.05 343.75

**TOP ALTITUDE:
3000**



NE-2, 20 FEB 2025 to 20 MAR 2025

NE-2, 20 FEB 2025 to 20 MAR 2025

NOTE: Chart not to scale.

DEPARTURE ROUTE DESCRIPTION

- TAKEOFF RUNWAY 6: Climb heading 059° to 3000, thence....
- TAKEOFF RUNWAYS 15L/15R: Climb heading 149° to 3000, thence....
- TAKEOFF RUNWAY 24: Climb heading 239° to 3000, thence....
- TAKEOFF RUNWAYS 33L/33R: Climb heading 329° to 3000, thence....

....on vectors to assigned route/fix. Maintain 3000, expect clearance to filed altitude/flight level 10 minutes after departure.

LONG ISLAND SEVEN DEPARTURE