

WAAS CH <b>53620</b> <b>W15A</b>	APP CRS <b>149°</b>	Rwy Idg TDZE <b>99</b> Apt Elev <b>99</b>	<b>5186</b>
--	------------------------	---	-------------

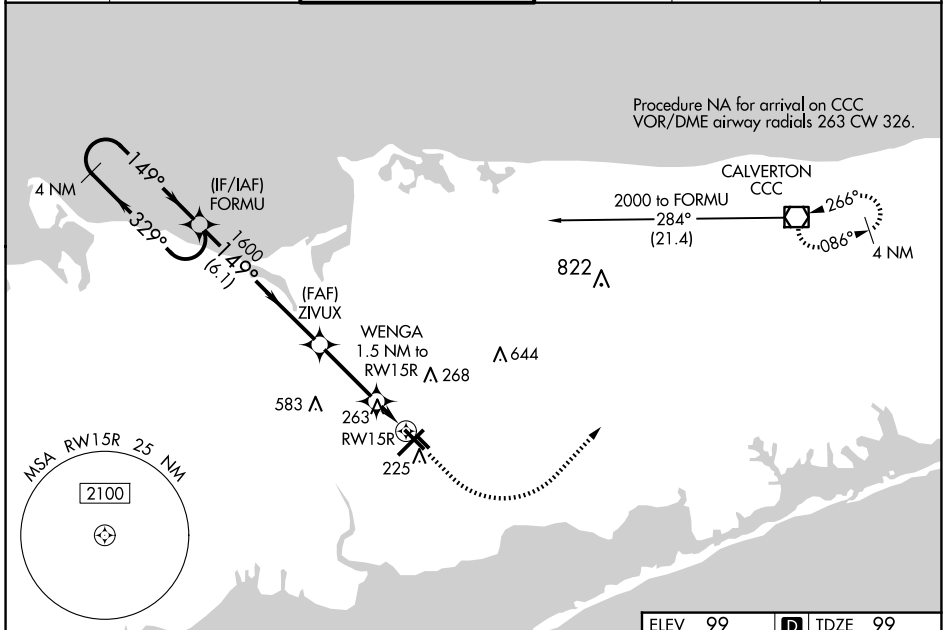
# RNAV (GPS) RWY 15R

LONG ISLAND MAC ARTHUR (ISP)

**⚠** Baro-VNAV NA when using Shirley altimeter setting. For uncompensated Baro-VNAV systems, procedure NA below -1.4°C (7°F) or above 46°C (115°F). DME/DME RNP-0.3 NA. When local altimeter setting not received, use Shirley altimeter setting and increase LPV DA to 442 feet, LNAV/VNAV DA to 575 feet and LNAV/VNAV visibility all Cats 1/8 mile; all MDAs 40 feet, LNAV Cats C/D visibility 1/8 mile, and Circling Cats C/D visibility 1/4 mile. Helicopter visibility reduction below 3/4 SM NA.

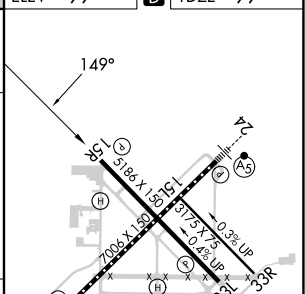
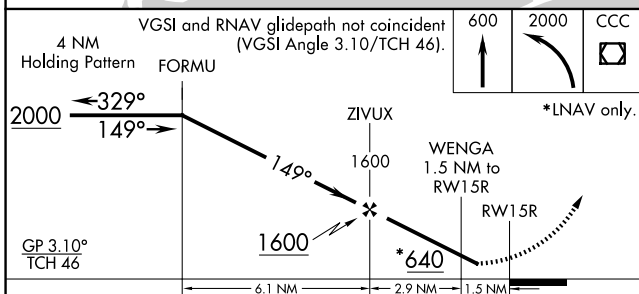
**⚠** MISSED APPROACH: Climb to 600 then climbing left turn to 2000 direct CCC VOR/DME and hold.

ATIS <b>120.725</b>	NEW YORK APP CON <b>120.05 343.75</b>	LONG ISLAND TOWER* <b>119.3 (CTAF) 335.5</b>	GND CON <b>135.3</b>	CLNC DEL <b>121.85</b>	UNICOM <b>122.95</b>
------------------------	--	---	-------------------------	---------------------------	-------------------------



NE-2, 20 FEB 2025 to 20 MAR 2025

NE-2, 20 FEB 2025 to 20 MAR 2025



CATEGORY	A	B	C	D
LPV DA	414-1		315 (400-1)	
LNAV/VNAV DA	547-1 3/8		448 (500-1 3/8)	
LNAV MDA	520-1	421 (500-1)	520-1 1/4	421 (500-1 1/4)
CIRCLING	600-1 501 (600-1)	660-1 561 (600-1)	660-1 1/2 561 (600-1 1/2)	960-2 3/4 861 (900-2 3/4)

