

WAAS CH <b>49120</b> <b>W33A</b>	APP CRS <b>329°</b>	Rwy Idg TDZE <b>89</b> Apt Elev <b>99</b>	<b>5186</b>
--	------------------------	---	-------------

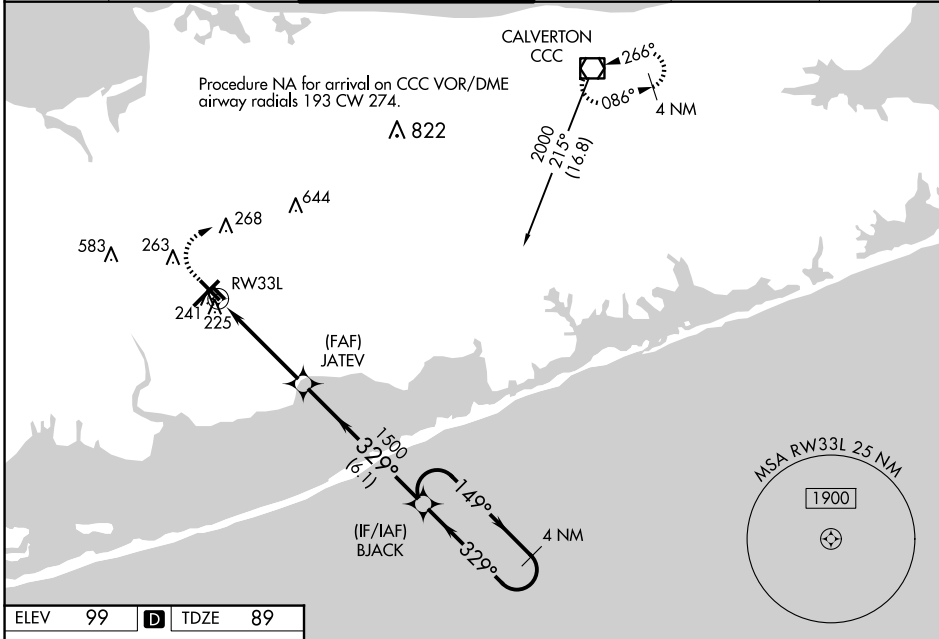
# RNAV (GPS) RWY 33L

LONG ISLAND MAC ARTHUR (ISP)

**⚠** For uncompensated Baro-VNAV systems, LNAV/VNAV NA below -14°C (7°F) or above 54°C (130°F).  
**⚠** DME/DME RNP-0.3 NA. When local altimeter setting not received, use Shirley altimeter setting and increase LPV DA to 367 feet, LNAV/VNAV DA to 440 feet and LPV and LNAV/VNAV visibility all Cats 1/8 mile, all MDA 40 feet, increase LNAV Cats C/D visibility 1/8 mile, and Circling Cats C/D visibility 1/4 mile. VDP and Baro-VNAV NA when using Shirley altimeter setting. Helicopter visibility reduction below 3/4 SM NA.

**MISSED APPROACH:** Climb to 600 then climbing right turn to 2000 direct CCC VOR/DME and hold.

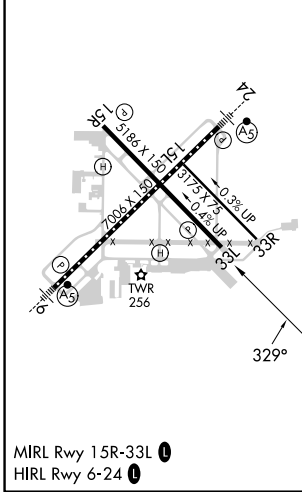
ATIS <b>120.725</b>	NEW YORK APP CON <b>120.05 343.75</b>	LONG ISLAND TOWER* <b>119.3 (CTAF) 335.5</b>	GND CON <b>135.3</b>	CLNC DEL <b>121.85</b>	UNICOM <b>122.95</b>
------------------------	--	---	-------------------------	---------------------------	-------------------------



NE-2, 20 FEB 2025 to 20 MAR 2025

NE-2, 20 FEB 2025 to 20 MAR 2025

ELEV 99	<b>D</b>	TDZE 89
---------	----------	---------



600 2000 CCC VGSI and RNAV glidepath not coincident (VGSI Angle 3.00°/TCH 50).

4 NM Holding Pattern BJACK

\* LNAV only.

\* 1.1 NM to RW33L

JATEV 1500

RW33L

1500

149° → 2000

← 329°

GP 3.00° TCH 45

1.1	3.2 NM	6.1 NM	
-----	--------	--------	--

CATEGORY	A	B	C	D
LPV DA		339-7/8	250 (300-7/8)	
LNAV/VNAV DA		412-1 1/8	323 (400-1 1/8)	
LNAV MDA	500-1	411 (500-1)	500-1 1/4	411 (500-1 1/4)
<b>C</b> CIRCLING	600-1 501 (600-1)	660-1 561 (600-1)	660-1 1/2 561 (600-1 1/2)	960-2 3/4 861 (900-2 3/4)