

EASTOVER, SOUTH CAROLINA

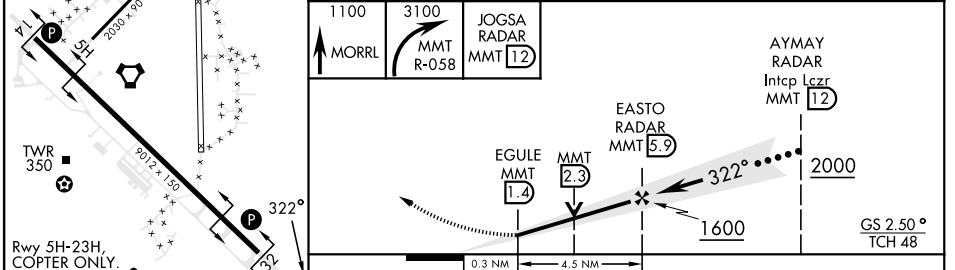
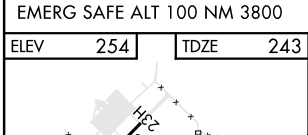
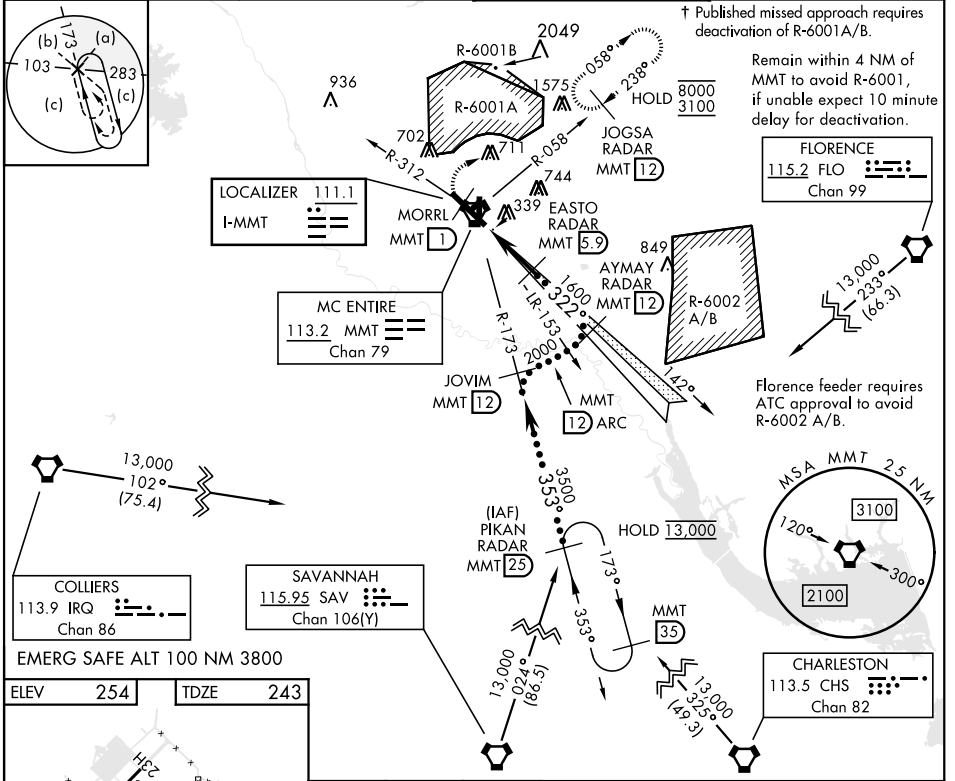
HI-ILS or LOC/DME RWY 32

LOC I-MMT 111.1	APCH CRS 322°	Rwy ldg TDZE Arprt Elev 9012 243 254	[USAF]	MC ENTIRE JNGB (KMMT)
---------------------------	-------------------------	--	--------	-----------------------

▼ *When ALS inop, increase CAT CDE RVR to 40, vis to 3/4 mile.
 **When ALS inop, increase CAT C RVR to 55, vis to 1 mile.

ALSF-1
 † MISSED APPROACH: Climb to 1100 direct MORRL/1 DME then climbing right turn to 3100 intercept MMT R-058 direct JOGSA/12 DME and hold.

ATIS ★ 327.05	SHAW APP CON 125.4 318.1	TOWER★ 132.4 (CTAF) 253.5	GND CON 127.625 226.675
-------------------------	------------------------------------	-------------------------------------	-----------------------------------



CATEGORY		C	D	E
S-ILS 32 *		443/24	200 (200-1/2)	
S-LOC 32 **		620/35	377 (400-5/8)	
CIRCLING	880-1 3/4	940-2 1/4	1020-2 3/4	
	626 (700-1 3/4)	686 (700-2 1/4)	766 (800-2 3/4)	

EASTOVER, SOUTH CAROLINA 33° 55' N-80° 48' W MC ENTIRE JNGB (KMMT)

HI-ILS or LOC/DME RWY 32

SE-2, 20 FEB 2025 to 20 MAR 2025

SE-2, 20 FEB 2025 to 20 MAR 2025

