

EASTOVER, SOUTH CAROLINA

# HI-TACAN RWY 32

MC ENTIRE JNGB (KMMT)

VORTAC MMT <b>113.2</b> Chan <b>79</b>	APCH CRS <b>328°</b>	Rwy ldg TDZE <b>243</b> Arprt Elev <b>254</b>
--	-------------------------	---

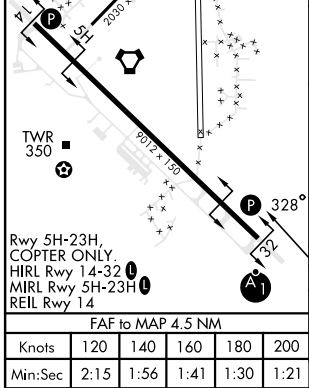
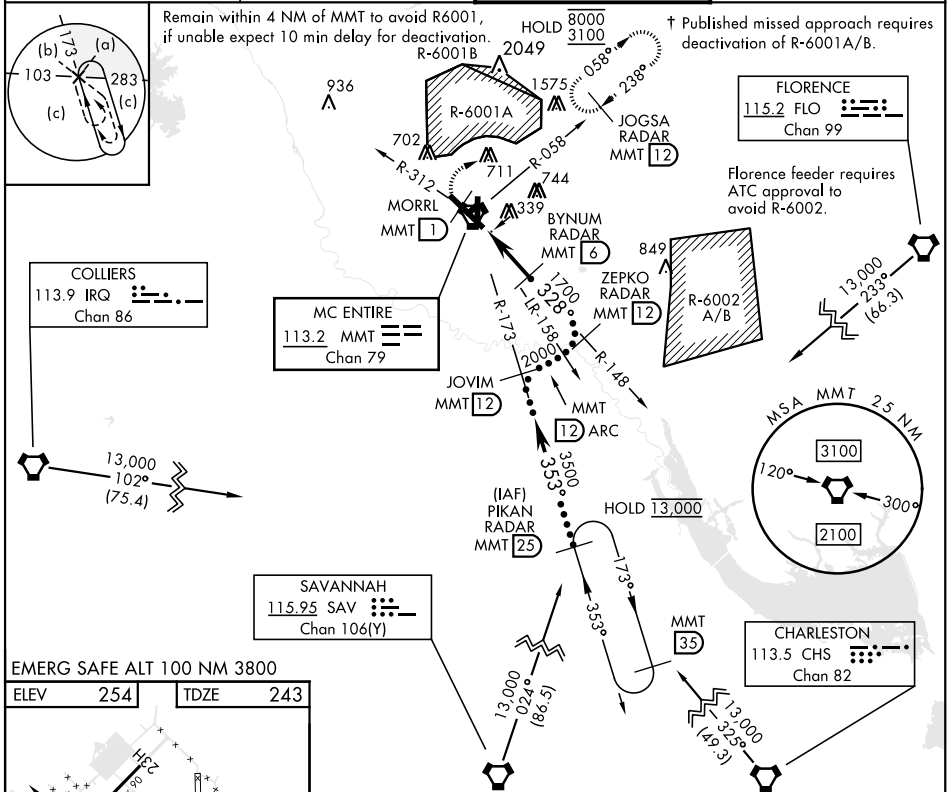
[USAF]

⚠ \* When ALS inop, increase CAT CDE RVR 60, vis to 1½ miles.



† MISSED APPROACH: Climb to 1100 direct MORRL/1 DME then climbing right turn to 3100 intercept MMT R-058 direct JOGSA/12 DME and hold.

ATIS ★ <b>327.05</b>	SHAW APP CON <b>125.4 318.1</b>	TOWER ★ <b>132.4 (CTAF) 253.5</b>	GND CON <b>127.625 226.675</b>
-------------------------	------------------------------------	--------------------------------------	-----------------------------------



1100 MORRL 1.3	3100 MMT R-058	JOGSA MMT 12	ZEPKO RADAR MMT 12	
MMT VORTAC	HUTEM MMT 1.5	MMT 2.3	BYNUM RADAR MMT 6	
CATEGORY		C	D	E
S-32 *		640/40	397 (400-¾)	
CIRCLING		880-1¾ 626 (700-1¾)	940-2½ 686 (700-2½)	1020-2¾ 766 (800-2¾)

EASTOVER, SOUTH CAROLINA  
Amdt 4 25MAY17

33°55'N-80°48'W

MC ENTIRE JNGB (KMMT)

# HI-TACAN RWY 32

SE-2, 20 FEB 2025 to 20 MAR 2025

SE-2, 20 FEB 2025 to 20 MAR 2025