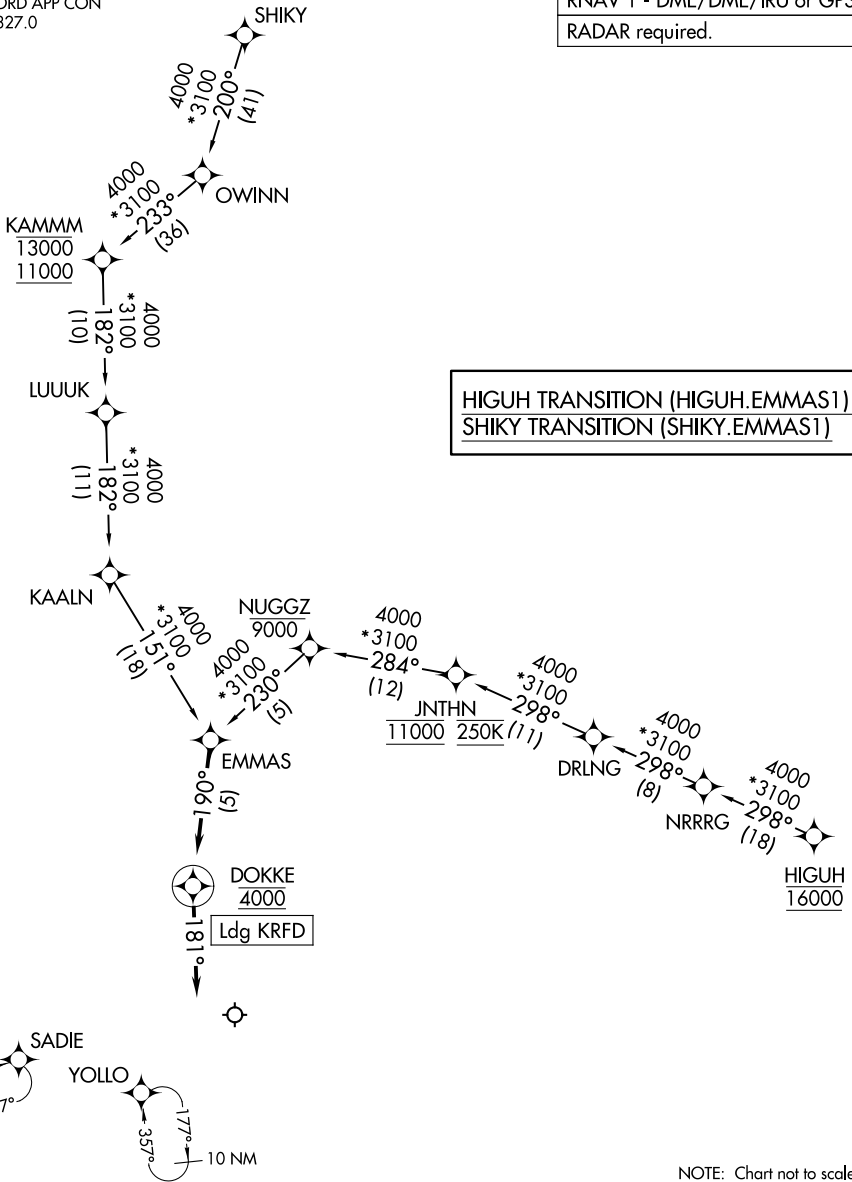


# EMMAS ONE ARRIVAL (RNAV)

ROCKFORD APP CON  
121.0 327.0  
ATIS  
127.6

RNAV 1 - DME/DME/IRU or GPS.  
RADAR required.



EC-3, 20 FEB 2025 to 20 MAR 2025

EC-3, 20 FEB 2025 to 20 MAR 2025

## ARRIVAL ROUTE DESCRIPTION

From EMMAS on track 190° to cross DOKKE at 4000, then on track 181°.  
Expect RADAR vectors to final approach course.