

(FNLEE.FNLEE1) 24025

AL-954 (FAA)

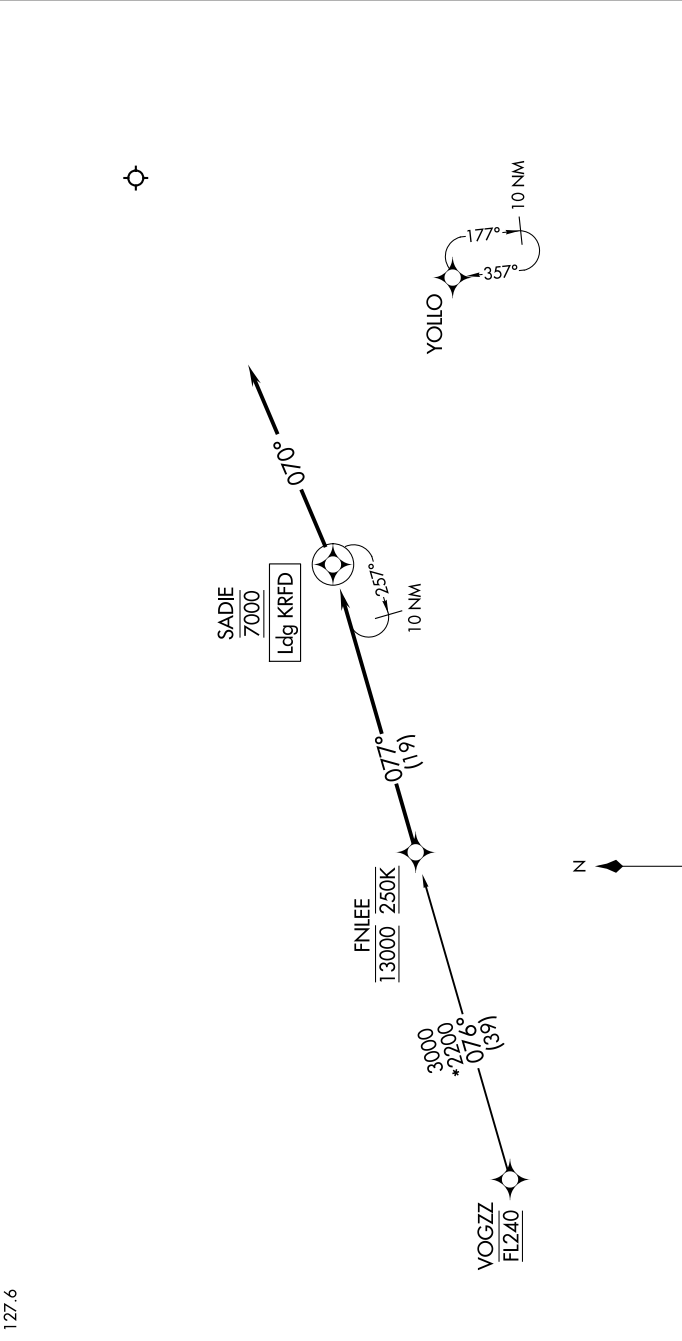
CHICAGO/ROCKFORD INTL (R.F'D)  
CHICAGO/ROCKFORD, ILLINOIS

# FNLEE ONE ARRIVAL (RNAV)

RNAV 1 - DME/DME/IRU or GPS.  
RADAR required.

EC-3, 20 FEB 2025 to 20 MAR 2025

ROCKFORD APP CON  
121.0 327.0  
ATIS  
127.6



## ARRIVAL ROUTE DESCRIPTION

### VOGZZ TRANSITION (VOGZZ.FNLEE1)

From FNLEE on track 077° to cross SADIE at 7000, then on track 070°.  
Expect RADAR vectors to final approach course.

NOTE: Chart not to scale.

EC-3, 20 FEB 2025 to 20 MAR 2025

# FNLEE ONE ARRIVAL (RNAV)

(FNLEE.FNLEE1) 25JAN24

CHICAGO/ROCKFORD, ILLINOIS  
CHICAGO/ROCKFORD INTL (R.F'D)