

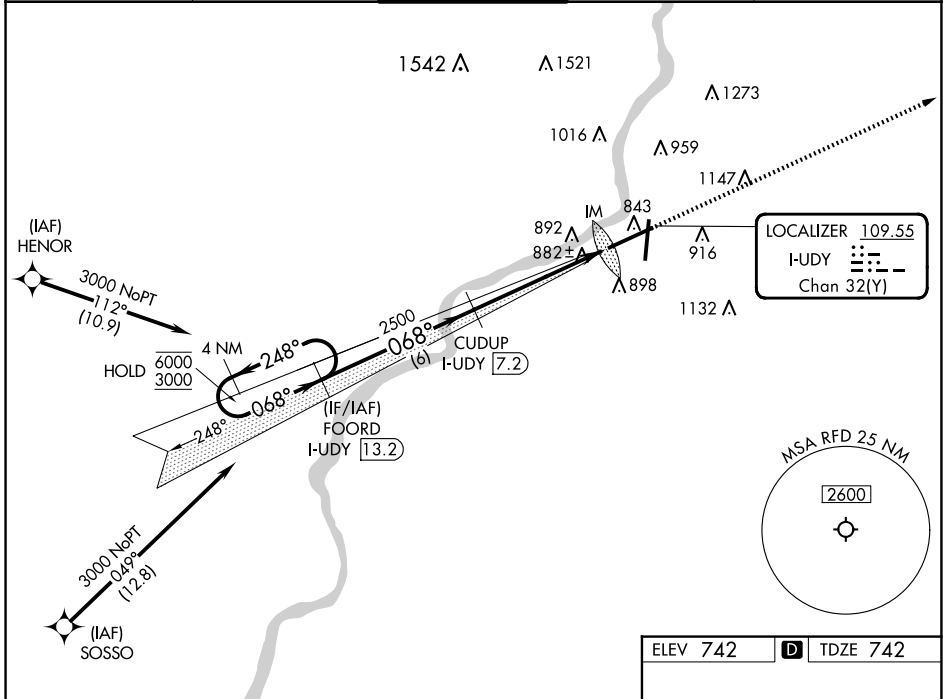
LOC/DME I-UDY <b>109.55</b> Chan <b>32 (Y)</b>	APP CRS <b>068°</b>	Rwy Idg <b>10002</b> TDZE <b>742</b> Apt Elev <b>742</b>
------------------------------------------------------	------------------------	----------------------------------------------------------------

# ILS RWY 7 (SA CAT I)

CHICAGO/ROCKFORD INTL (RFD)

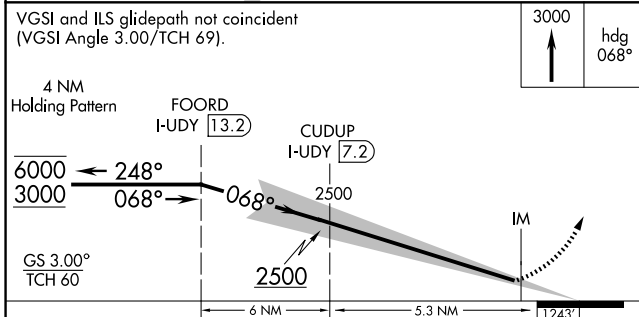
RNP APCH - GPS. From HENOR or SOSSO. RADAR required.		ALSF-2	MISSED APPROACH: Climb to 3000 on heading 068°. Expect RADAR vectors. (RADAR required).	
ASR Requires specific OPSPEC, MSPEC, or LOA approval.				

ATIS <b>127.6</b>	ROCKFORD APP CON <b>121.0 327.0</b>	ROCKFORD TOWER <b>118.1 290.375</b>	GND CON <b>121.9 290.375</b>	CLNC DEL <b>119.25</b>
----------------------	----------------------------------------	----------------------------------------	---------------------------------	---------------------------

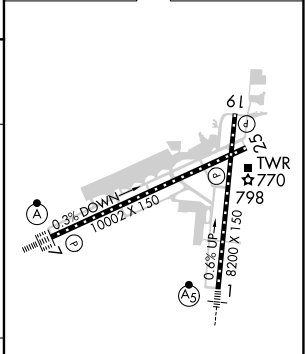


EC-3, 20 FEB 2025 to 20 MAR 2025

EC-3, 20 FEB 2025 to 20 MAR 2025



ELEV 742	TDZE 742
----------	----------



CATEGORY	A	B	C	D
S-ILS 7	RA 164/14 150 DA 892			

**SA CATEGORY I ILS - SPECIAL AIRCREW & AIRCRAFT CERTIFICATION REQUIRED**

REIL Rwy 19 and 25  
HIRL Rwy 1-19 and 7-25  
TDZ/CL Rwy 1 and 7