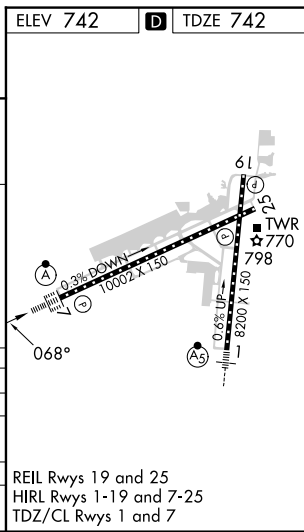
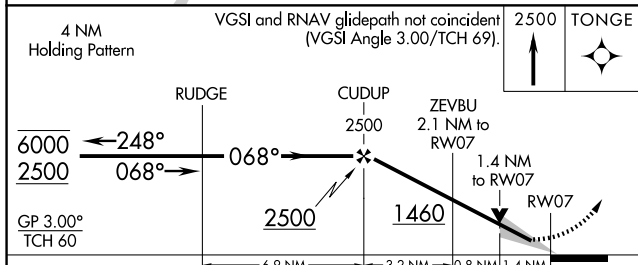
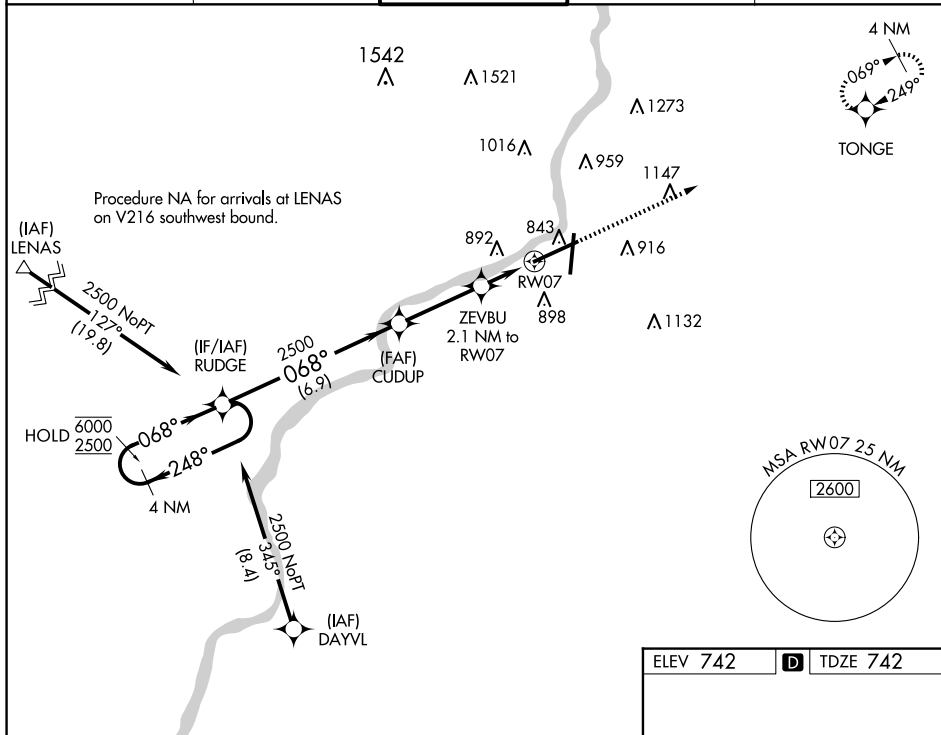


WAAS CH <b>53621</b> <b>W07A</b>	APP CRS <b>068°</b>	Rwy Idg <b>10002</b> TDZE <b>742</b> Apt Elev <b>742</b>
--	------------------------	--

# RNAV (GPS) RWY 7

CHICAGO/ROCKFORD INTL (RFD)

RNP APCH - GPS.		ALSF-2	MISSED APPROACH: Climb to 2500 direct TONGE and hold.	
For uncompensated Baro-VNAV systems, LNAV/VNAV NA below -16°C or above 54°C.				
ATIS <b>127.6</b>	ROCKFORD APP CON <b>121.0 327.0</b>	ROCKFORD TOWER <b>118.1 290.375</b>	GND CON <b>121.9 290.375</b>	CLNC DEL <b>119.25</b>



CATEGORY	A	B	C	D
LPV DA		942/24	200 (200-½)	
LNAV/VNAV DA		1167/45	425 (500-¾)	
LNAV MDA	1240/24	498 (500-½)	1240/50	498 (500-1)
<b>C</b> CIRCLING	1240-1 498 (500-1)	1280-1 538 (600-1)	1320-1½ 578 (600-1½)	1460-2¼ 718 (800-2¼)

REIL Rwy 19 and 25  
HIRL Rwy 1-19 and 7-25  
TDZ/CL Rwy 1 and 7

EC-3, 20 FEB 2025 to 20 MAR 2025

EC-3, 20 FEB 2025 to 20 MAR 2025