

WAAS CH <b>70345</b> <b>W15A</b>	APP CRS <b>148°</b>	Rwy ldg TDZE Apt Elev	<b>5498</b> <b>1048</b> <b>1051</b>
--	------------------------	-----------------------------	---

# RNAV (GPS) RWY 15

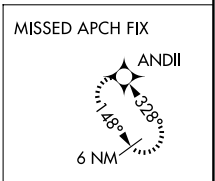
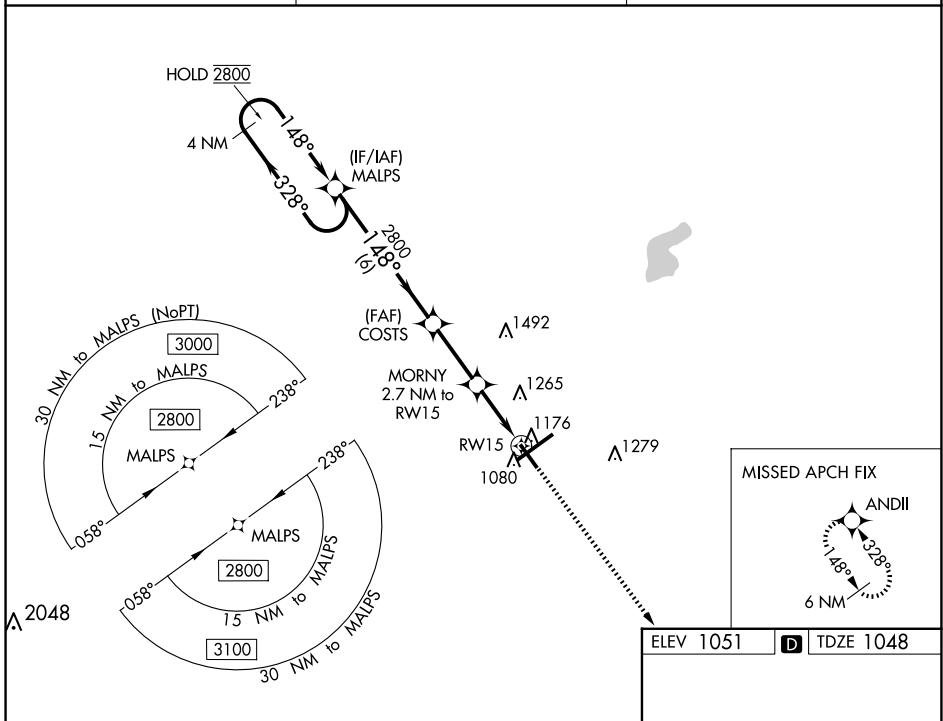
SPRINGFIELD/BECKLEY MUNI (SGH)

RNP APCH - GPS.

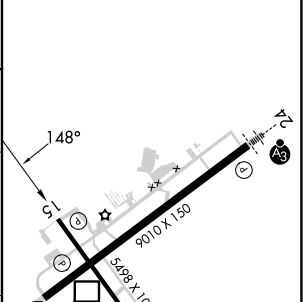
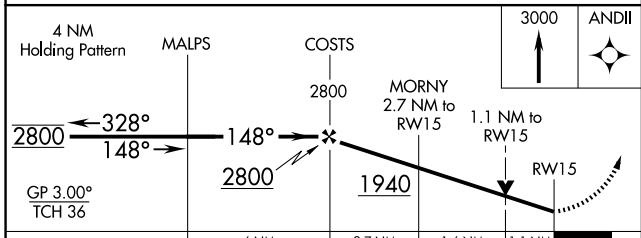
▼ Rwy 15 helicopter visibility reduction below 3/4 SM NA.  
▲ For uncompensated Baro-VNAV systems, LNAV/VNAV NA below -17°C or above 54°C.

MISSED APPROACH: Climb to 3000 direct ANDII and hold.

AWOS-3PT <b>134.975</b>	COLUMBUS APP CON <b>118.85 269.275</b>	UNICOM <b>122.95 (CTAF) ①</b>
----------------------------	---	----------------------------------



ELEV 1051	TDZE 1048
-----------	-----------



CATEGORY	A	B	C	D
LPV DA		1298-3/4	250 (300-3/4)	
LNAV/VNAV DA		1337-7/8	289 (300-7/8)	
LNAV MDA	1440-1	392 (400-1)	1440-1 1/8	392 (400-1 1/8)
CIRCLING	1480-1 429 (500-1)	1580-1 529 (600-1)	1580-1 1/2 529 (600-1 1/2)	1620-2 569 (600-2)

HIRL Rwy 6-24 ①  
MIRL Rwy 15-33 ①  
REIL Rws 6, 15 and 33 ①

EC-2, 20 FEB 2025 to 20 MAR 2025

EC-2, 20 FEB 2025 to 20 MAR 2025