


MARIETTA, GEORGIA

TACAN RWY 11

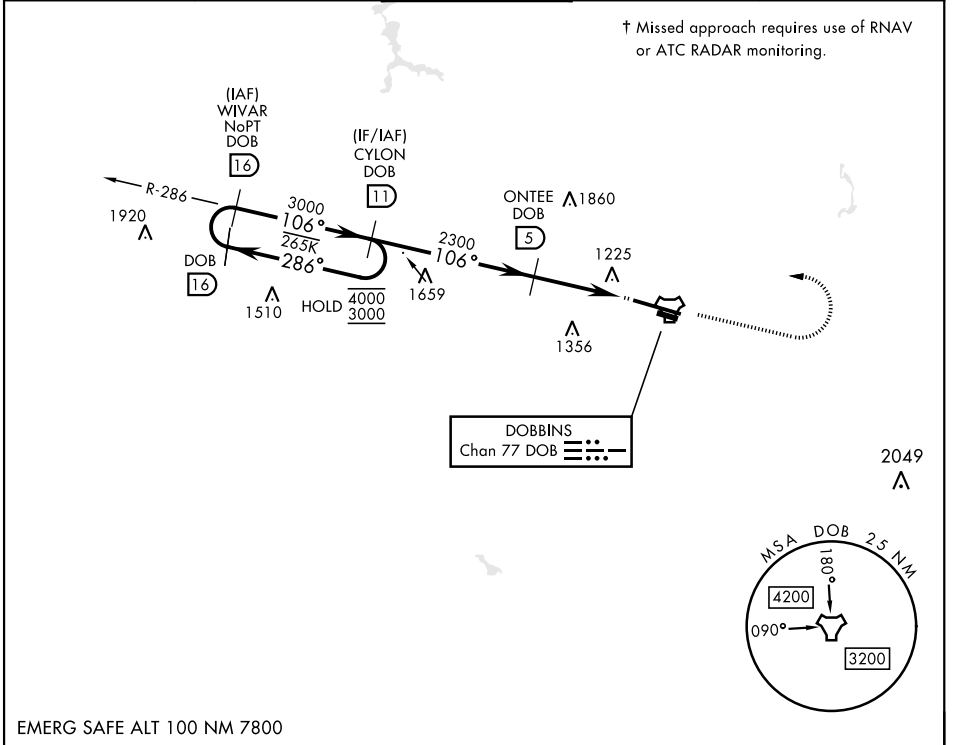
TACAN Chan 77	DOB	APCH CRS 106°	Rwy Idg 10,002 TDZE 1069 Arprt Elev 1069	[USAF]	DOBBINS ARB (KMGE)
-------------------------	-----	-------------------------	---	--------	--------------------

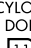

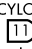
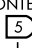
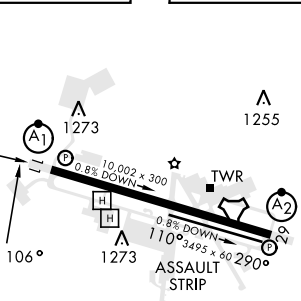
▼ * When ALS inop, increase CAT AB RVR to 55 and vis to 1 mile, CAT CDE vis to 1½ miles.
 ** Circling not authorized N of Rwy 11-29 for CAT DE aircraft. Circling to assault strip not authorized.

ALSF-1 

† MISSED APPROACH: Climb to 2000 on track 106°, then climbing left turn to 3000, intercept DOB TACAN R-286 to CYLON and hold.

ATIS ★ 269.5	ATLANTA APP CON 121.0 268.7	TOWER ★ 120.75 370.875	GND CON 125.3 275.8	ASR
------------------------	---------------------------------------	----------------------------------	-------------------------------	-----



	2000 tr 106°		3000		CYLON DOB 	ELEV 1069	TDZE 1069
	WIVAR 		CYLON 		ONTEE 		
	3000 106°		3000 106°		2300	10,002 x 300 0.8% DOWN 110° 3495 x 60 290° 0.5% DOWN ASSAULT STRIP	
			2.97° TCH 56		3.2 NM	0.5 NM	
CATEGORY	A	B	C	D	E		
S-11*	1600/40	531 (600-¾)	1600/55	531 (600-1)			
CIRCLING**	1600-1 531 (600-1)	1620-1 551 (600-1)	1760-2 691 (700-2)	1760-2¼ 691 (700-2¼)	1760-2½ 691 (700-2½)	HIRL Rwy 11-29 REIL Rwy 11 and 29	

MARIETTA, GEORGIA 33°55'N-84°31'W DOBBINS ARB (KMGE)

TACAN RWY 11

Amdt 8 11JUL24

SE-4, 20 FEB 2025 to 20 MAR 2025

SE-4, 20 FEB 2025 to 20 MAR 2025