

APP CRS	Rwy Idg	<b>10000</b>
<b>216°</b>	TDZE	<b>1166</b>
	Apt Elev	<b>1189</b>

# RNAV (RNP) Z RWY 22

GRANT COUNTY INTL (MWH)

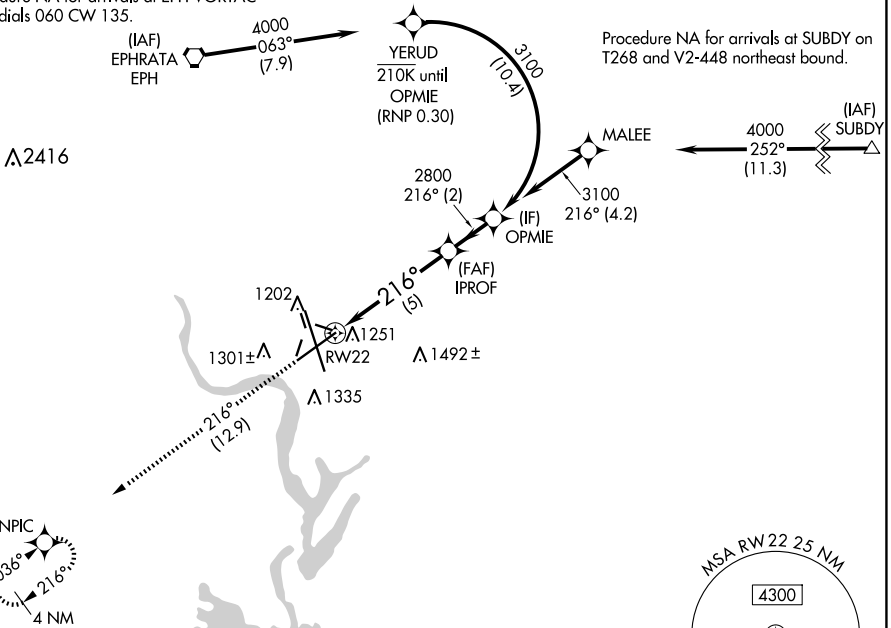
RNP AR APCH-GPS.  
 For uncompensated Baro-VNAV systems, procedure NA below  
 -1.5°C or above 54°C.

MISSED APPROACH: Climb to 4000 on track 216° to ONPIC and hold.

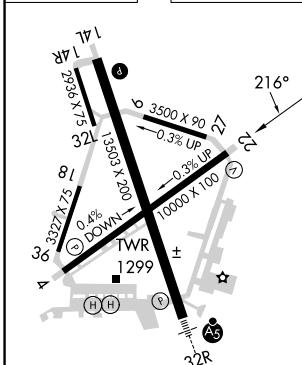
ATIS <b>119.05</b>	GRANT COUNTY APP CON * <b>126.4 379.95</b>	GRANT COUNTY TOWER * <b>118.25 (CTAF) 0 257.8 (EAST)</b> <b>128.0 257.8 (WEST)</b>	GND CON <b>121.9</b>	UNICOM <b>122.95</b>
-----------------------	---	--	-------------------------	-------------------------

Procedure NA for arrivals at EPH VORTAC on radials 060 CW 135.

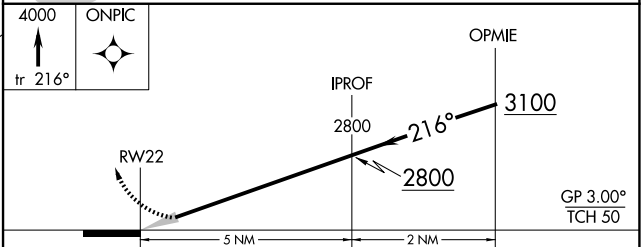
Procedure NA for arrivals at SUBDY on T268 and V2-448 northeast bound.



ELEV 1189	<b>D</b>	TDZE 1166
-----------	----------	-----------



REIL Rwy 4  
 REIL Rwy 14L and 22  
 HIRL Rwy 14L-32R  
 MIRL Rwy 4-22 and 18-36



CATEGORY	A	B	C	D
RNP 0.10 DA	1421- <sup>3</sup> / <sub>4</sub> 255 (300- <sup>3</sup> / <sub>4</sub> )			
RNP 0.30 DA	1508-1 342 (400-1)			

**AUTHORIZATION REQUIRED**

NW-1, 20 FEB 2025 to 20 MAR 2025

NW-1, 20 FEB 2025 to 20 MAR 2025