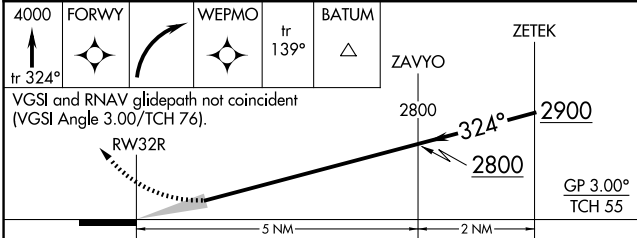
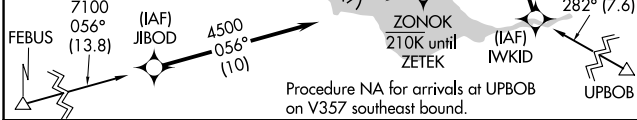
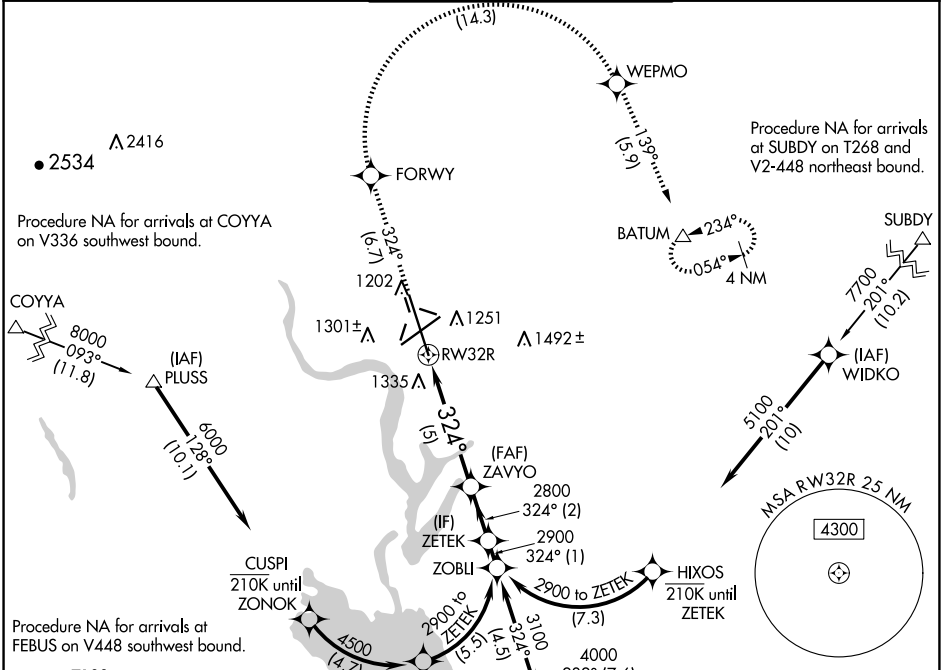


APP CRS	Rwy ldg	13492
324°	TDZE	1167
	Apt Elev	1189

RNAV (RNP) Z RWY 32R

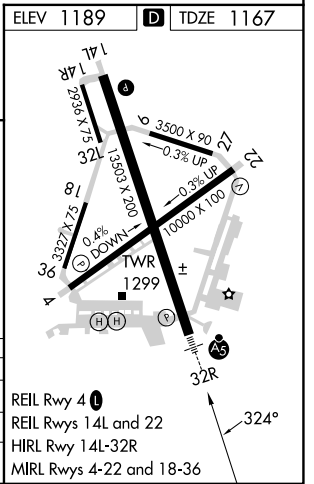
GRANT COUNTY INTL (MWH)

RNP AR APCH-GPS.		MALSR	MISSED APPROACH: Climb to 4000 on track 324° to FORWY right turn to WEPMO and track 139° to BATUM and hold.	
<p>⚠ For uncompensated Baro-VNAV systems, procedure NA below -15°C or above 54°C. For inoperative ALS increase RNP 0.10 visibility all Cats to RVR 4000, increase RNP 0.30 visibility all Cats to RVR 6000.</p>				
ATIS	GRANT COUNTY APP CON *	GRANT COUNTY TOWER *	GND CON	UNICOM
119.05	126.4 379.95	118.25 (CTAF) 257.8 (EAST) 128.0 257.8 (WEST)	121.9	122.95



CATEGORY	A	B	C	D
RNP 0.10 DA		1417/24	250 (300-½)	
RNP 0.30 DA		1564/35	397 (400-⅘)	

AUTHORIZATION REQUIRED



NW-1, 20 FEB 2025 to 20 MAR 2025

NW-1, 20 FEB 2025 to 20 MAR 2025