

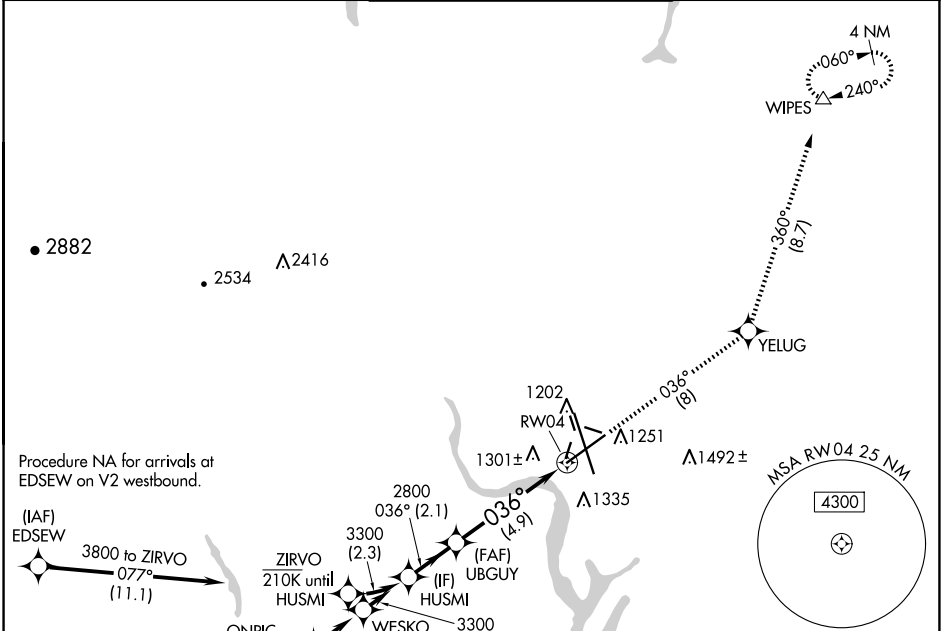
APP CRS	Rwy Idg	10000
036°	TDZE	1189
	Apt Elev	1189

RNAV (RNP) Z RWY 4

GRANT COUNTY INTL (MWH)

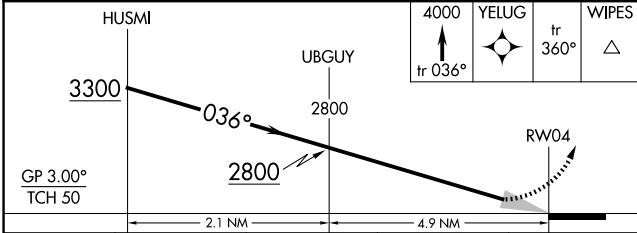
RNP AR APCH-GPS.		MISSED APPROACH: Climb to 4000 on track 036° to YELUG and track 360° to WIPES and hold.	
<p>▽ For uncompensated Baro-VNAV systems, procedure NA below -15°C or above 54°C.</p>			

ATIS 119.05	GRANT COUNTY APP CON * 126.4 379.95	GRANT COUNTY TOWER * 118.25 (CTAF) 0 257.8 (EAST) 128.0 257.8 (WEST)	GND CON 121.9	UNICOM 122.95
-----------------------	---	---	-------------------------	-------------------------



HUSMI	4000	YELUG	WIPES
3300	tr 036°	tr 360°	△
UBGUY	2800		
GP 3.00°			
TCH 50			
	2.1 NM	4.9 NM	

ELEV 1189	D TDZE 1189
-----------	--------------------



CATEGORY	A	B	C	D
RNP 0.10 DA	1549-1 360 (400-1)			
RNP 0.30 DA	1644-1 ³ / ₈ 455 (500-1 ³ / ₈)			

AUTHORIZATION REQUIRED

NW-1, 20 FEB 2025 to 20 MAR 2025

NW-1, 20 FEB 2025 to 20 MAR 2025