

WAAS CH 90509 W14A	APP CRS 144°	Rwy ldg 13503 TDZE 1169 Apt Elev 1189
--	------------------------	--

RNAV (GPS) Y RWY 14L

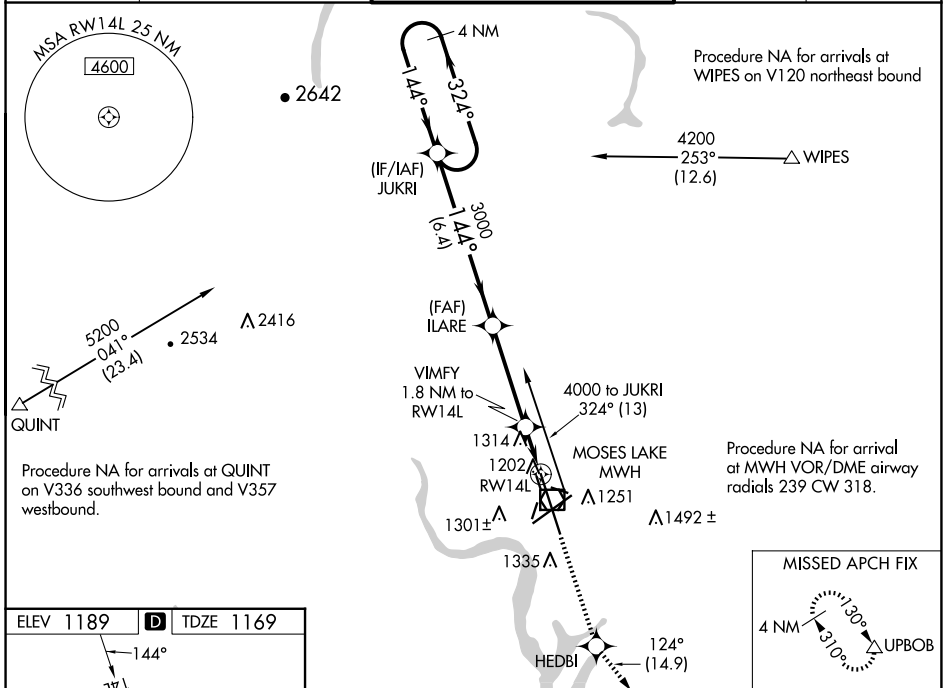
GRANT COUNTY INTL (MWH)

RNP APCH.

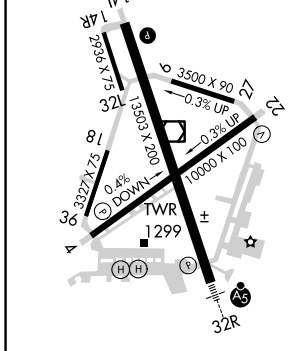
▼ For uncompensated Baro-VNAV systems, LNAV/VNAV NA below -17°C or above 36°C.
 ▲ Baro-VNAV and VDP NA when using Ephrata altimeter setting. When local altimeter setting not received, use Ephrata altimeter setting; increase all DA 36 feet and all MDA 40 feet, increase LNAV/VNAV visibility all Cats 1/8 SM, LNAV Cats C and D and Circling Cat D 1/4 SM.

MISSED APPROACH: Climb to 4000 direct HEDBI and on track 124° to UPBOB and hold.

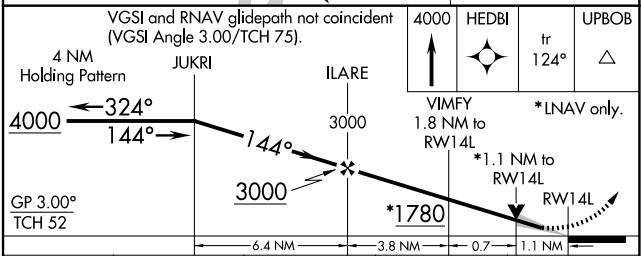
ATIS 119.05	GRANT COUNTY APP CON * 126.4 379.95	GRANT COUNTY TOWER * 118.25 (CTAF) 0 257.8 (EAST) 128.0 257.8 (WEST)	GND CON 121.9	UNICOM 122.95
-----------------------	---	--	-------------------------	-------------------------



ELEV 1189	D	TDZE 1169
-----------	----------	-----------



REIL Rwy 4
 REIL Rwy 14L and 22
 HIRL Rwy 14L-32R
 MIRL Rwy 4-22 and 18-36



CATEGORY	A	B	C	D
LPV DA		1369-3/4	200 (200-3/4)	
LNAV/VNAV DA		1436-7/8	267 (300-7/8)	
LNAV MDA	1580-1	411 (400-1)	1580-1 1/8	411 (400-1 1/8)
CIRCLING	1660-1	471 (500-1)	1680-1 1/2	1820-2 631 (700-2)

NW-1, 20 FEB 2025 to 20 MAR 2025

NW-1, 20 FEB 2025 to 20 MAR 2025