

WAAS CH <b>77799</b> <b>W32A</b>	APP CRS <b>324°</b>	Rwy ldg <b>13492</b> TDZE <b>1167</b> Apt Elev <b>1189</b>
--	------------------------	--

# RNAV (GPS) Y RWY 32R

GRANT COUNTY INTL (MWH)

RNP APCH-GPS.

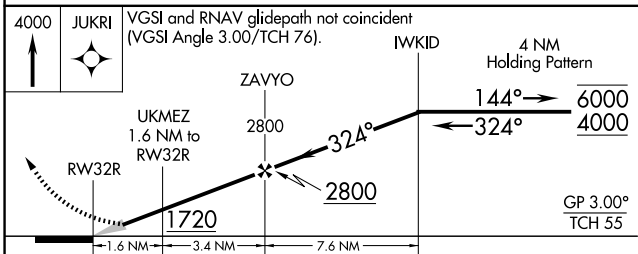
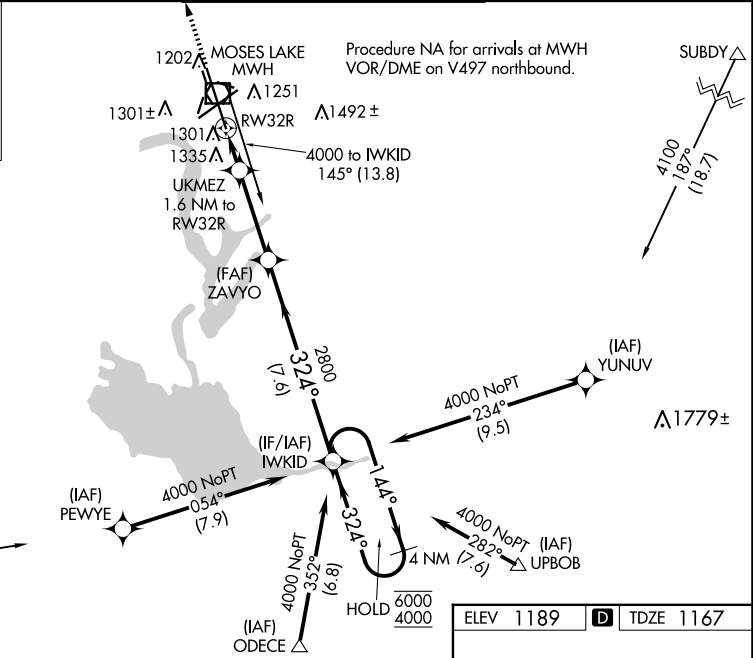
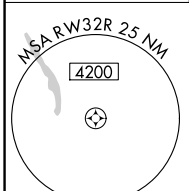
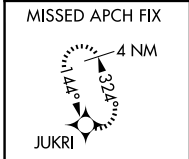
**⚠** For uncompensated Baro-VNAV systems, LNAV/VNAV NA below -15°C or above 54°C. Circling Rwy 9/27, 18/36 NA at night. For inop ALS increase LNAV/VNAV all Cats visibility to RVR 5500, increase LNAV Cat C and D visibility to 1/2 SM.  
\*RVR 1800 authorized with use of FD or AP or HUD to DA (NA when using Ephrata altimeter setting).

MALSR

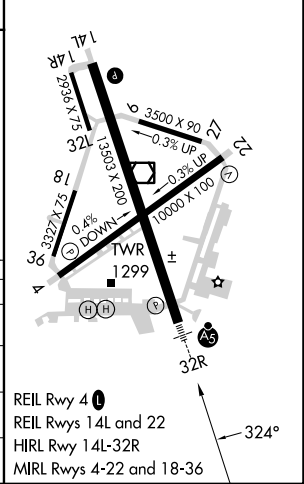


MISSED APPROACH: Climb to 4000 direct JUKRI and hold.

ATIS <b>119.05</b>	GRANT COUNTY APP CON * <b>126.4 379.95</b>	GRANT COUNTY TOWER * <b>118.25 (CTAF) 0 257.8 (EAST)</b> <b>128.0 257.8 (WEST)</b>	GND CON <b>121.9</b>	UNICOM <b>122.95</b>
-----------------------	---	--	-------------------------	-------------------------



ELEV 1189	TDZE 1167
-----------	-----------



CATEGORY	A	B	C	D
LPV DA*		1367/24	200 (200-1/2)	
LNAV/VNAV DA		1540/35	373 (400-3/4)	
LNAV MDA	1620/24	453 (500-1/2)	1620/45	453 (500-3/4)
CIRCLING	1660-1	471 (500-1)	1680-1 1/2	1820-2
			491 (500-1 1/2)	631 (700-2)

REIL Rwy 4  
REIL Rwy 14L and 22  
HIRL Rwy 14L-32R  
MIRL Rwy 4-22 and 18-36

NW-1, 20 FEB 2025 to 20 MAR 2025

NW-1, 20 FEB 2025 to 20 MAR 2025