

WAAS CH 42809 W04A	APP CRS 036°	Rwy ldg 10000 TDZE 1189 Apt Elev 1189
--	------------------------	--

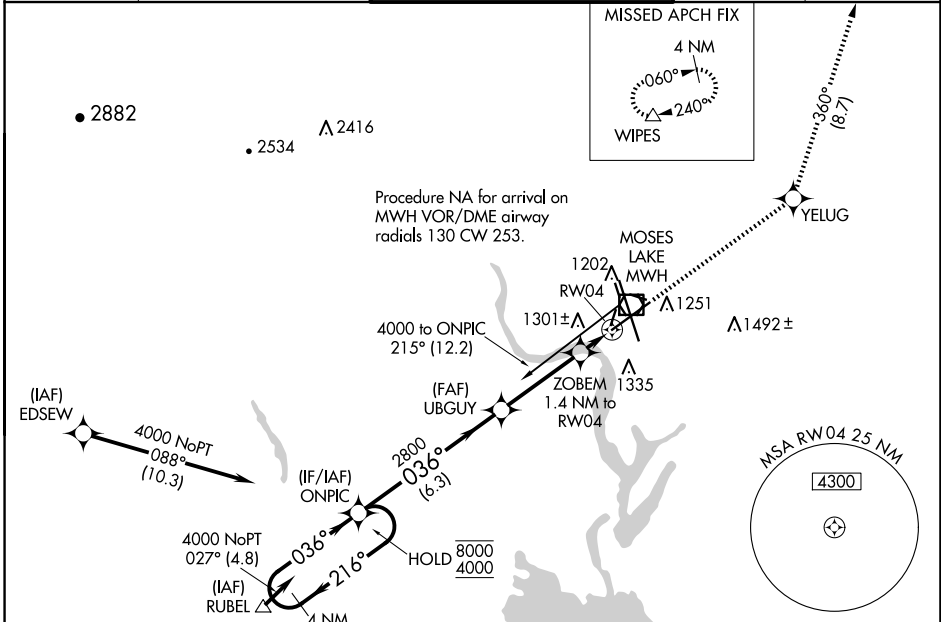
RNAV (GPS) Y RWY 4

GRANT COUNTY INTL (MWH)

RNP APCH-GPS.
 ⚠ Circling Rwy 9/27, 18/36 NA at night. For uncompensated Baro-VNAV systems, LNAV/VNAV NA below -15°C or above 54°C.

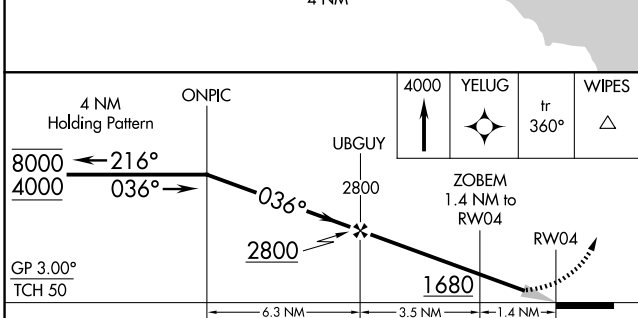
MISSED APPROACH: Climb to 4000 direct YELUG and on track 360° to WIPES and hold.

ATIS 119.05	GRANT COUNTY APP CON ★ 126.4 379.95	GRANT COUNTY TOWER ★ 118.25 (CTAF) 0 257.8 (EAST) 128.0 257.8 (WEST)	GND CON 121.9	UNICOM 122.95
-----------------------	---	--	-------------------------	-------------------------

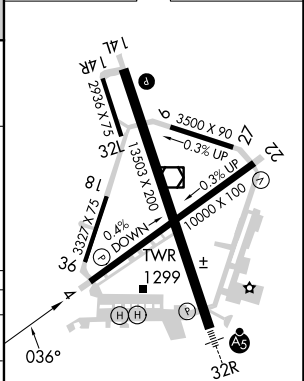


NW-1, 20 FEB 2025 to 20 MAR 2025

NW-1, 20 FEB 2025 to 20 MAR 2025



ELEV 1189	D	TDZE 1189
-----------	---	-----------



GP 3.00° TCH 50	ONPIC		4000	YELUG	tr 360°	WIPES
	4000	2800	ZOBEM 1.4 NM to RW04			
	6.3 NM	3.5 NM	1.4 NM			
CATEGORY	A	B	C	D		
LPV DA		1389-3/4	200 (200-3/4)			
LNAV/VNAV DA		1461-7/8	272 (300-7/8)			
LNAV MDA		1560-1	371 (400-1)			
CIRCLING	1660-1	471 (500-1)	1680-1 1/2 491 (500-1 1/2)	1820-2 631 (700-2)		

REIL Rwy 4
 REIL Rwy 14L and 22
 HIRL Rwy 14L-32R
 MIRL Rwy 4-22 and 18-36