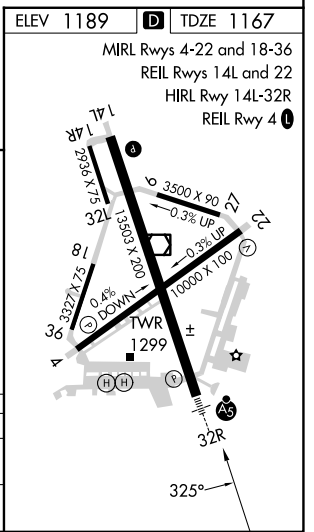
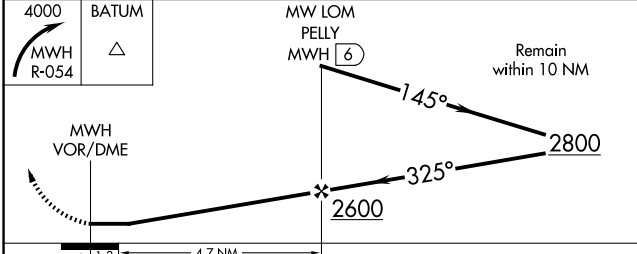
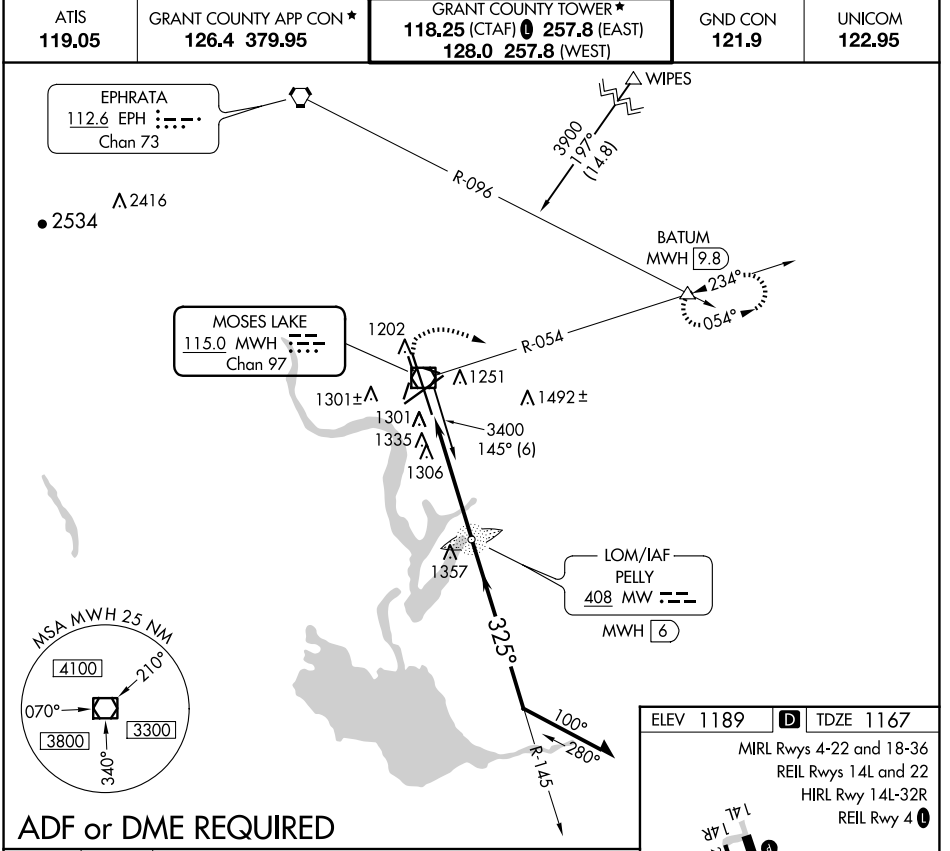


VOR/DME MWH 115.0 Chan 97	APP CRS 325°	Rwy Idg 13492 TDZE 1167 Apt Elev 1189
---	------------------------	--

VOR RWY 32R

GRANT COUNTY INTL (MWH)

		MISSED APPROACH: Climbing right turn to 4000 via MWH R-054 to BATUM INT/MWH 9.8 DME and hold.		
		ATIS 119.05	GRANT COUNTY APP CON ★ 126.4 379.95	GRANT COUNTY TOWER ★ 118.25 (CTAF) 257.8 (EAST) 128.0 257.8 (WEST)



NW-1, 20 FEB 2025 to 20 MAR 2025

NW-1, 20 FEB 2025 to 20 MAR 2025