

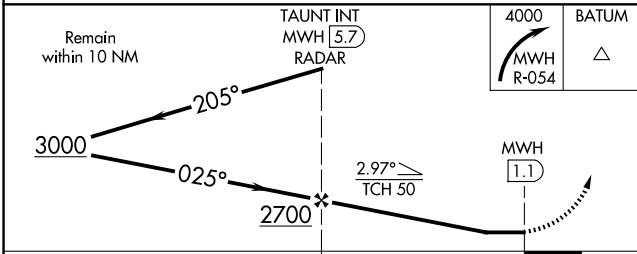
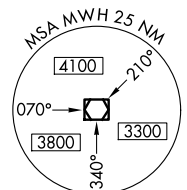
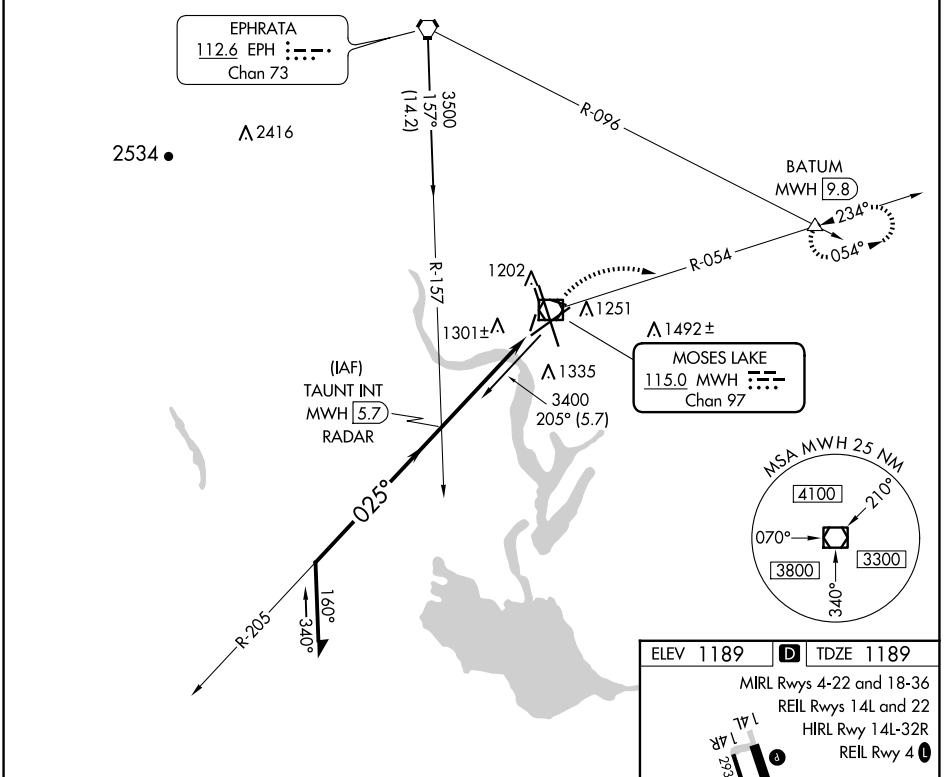
VOR/DME MWH 115.0 Chan 97	APP CRS 025°	Rwy Idg 10000 TDZE 1189 Apt Elev 1189
---	------------------------	--

VOR RWY 4

GRANT COUNTY INTL (MWH)

⚠ MISSED APPROACH: Climbing right turn to 4000 via MWH R-054 to BATUM INT/MWH 9.8 DME and hold.

ATIS 119.05	GRANT COUNTY APP CON * 126.4 379.95	GRANT COUNTY TOWER * 118.25 (CTAF) 0 257.8 (EAST) 128.0 257.8 (WEST)	GND CON 121.9	UNICOM 122.95
-----------------------	---	---	-------------------------	-------------------------



ELEV 1189 **D** TDZE 1189

MIRL Rwy 4-22 and 18-36
REIL Rwy 14L and 22
HIRL Rwy 14L-32R
REIL Rwy 4 **L**

FAF to MAP 4.6 NM

Knots	60	90	120	150	180
Min:Sec	4:36	3:04	2:18	1:50	1:32

NW-1, 20 FEB 2025 to 20 MAR 2025

NW-1, 20 FEB 2025 to 20 MAR 2025