

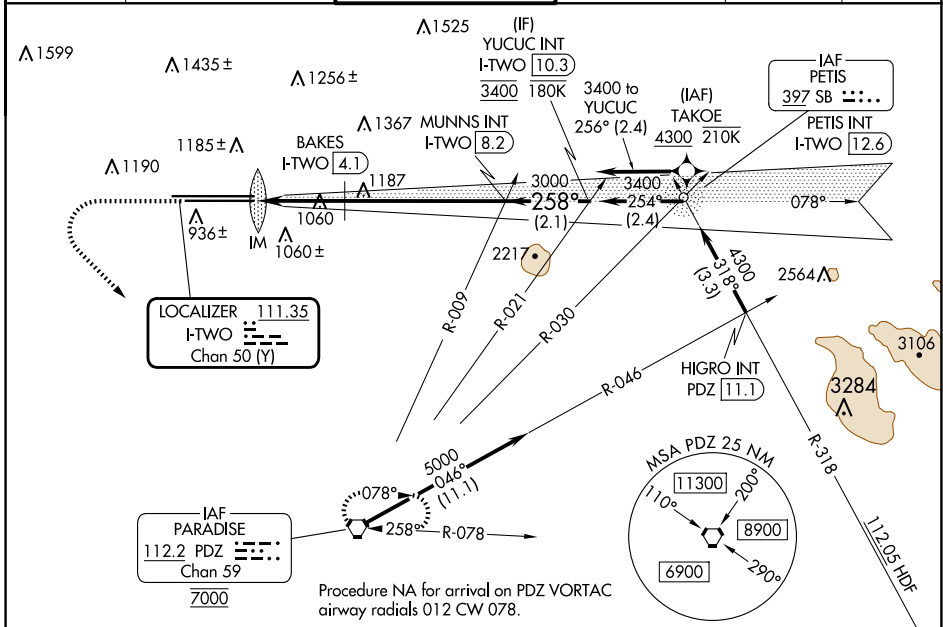
LOC/DME I-TWO 111.35 Chan 50 (Y)	APP CRS 258°	Rwy Idg TDZE Apt Elev	26L 10200 926 944	26R 12197 932 944
---	------------------------	-----------------------------	---	---

ILS or LOC RWY 26L

ONTARIO INTL (ONT)

RNP APCH - GPS. From TAKOE.		ALSF-2 Rwy 26L	ALSF-2 Rwy 26R	MISSED APPROACH: Climb to 2800 then climbing left turn to 5400 direct PDZ VORTAC and hold, continue climb-in-hold to 5400.	
Circling NA north of Rwy 8L-26R. For inop ALS, increase S-LOC 26L Cat C and D visibility to 2½ SM.					

D-ATIS 124.25	SOCAL APP CON 127.0 318.2	ONTARIO TOWER 120.6 360.775	GND CON 121.9 257.8	CLNC DEL 132.9	CPDLC
-------------------------	-------------------------------------	---------------------------------------	-------------------------------	--------------------------	-------



ELEV 944	D TDZE 26L 926 TDZE 26R 932	2800	5400	PDZ	VGSI and ILS glidepath not coincident (VGSI Angle 3.00/TCH 74).	YUCUC INT I-TWO 10.3																																			
		<table border="1"> <thead> <tr> <th>CATEGORY</th> <th>A</th> <th>B</th> <th>C</th> <th>D</th> </tr> </thead> <tbody> <tr> <td>S-ILS 26L</td> <td colspan="4">1126/18 200 (200-½)</td> </tr> <tr> <td>S-LOC 26L</td> <td>1700/24 774 (800-½)</td> <td>1700/40 774 (800-¾)</td> <td>1700-1¾ 768 (800-1¾)</td> <td>1700-2 768 (800-2)</td> </tr> <tr> <td>SIDESTEP 26R</td> <td>1700/55</td> <td>768 (800-1)</td> <td>1700-1¾ 768 (800-1¾)</td> <td>1700-2 768 (800-2)</td> </tr> <tr> <td>C CIRCLING</td> <td>1700-1 756 (800-1)</td> <td>1700-1¼ 756 (800-1¼)</td> <td>1700-2½</td> <td>756 (800-2½)</td> </tr> <tr> <td colspan="5">BAKES FIX MINIMUMS (DME REQUIRED)</td> </tr> <tr> <td>S-LOC 26L</td> <td>1320/24</td> <td>394 (400-½)</td> <td>1320/35</td> <td>394 (400-¾)</td> </tr> </tbody> </table>					CATEGORY	A	B	C	D	S-ILS 26L	1126/18 200 (200-½)				S-LOC 26L	1700/24 774 (800-½)	1700/40 774 (800-¾)	1700-1¾ 768 (800-1¾)	1700-2 768 (800-2)	SIDESTEP 26R	1700/55	768 (800-1)	1700-1¾ 768 (800-1¾)	1700-2 768 (800-2)	C CIRCLING	1700-1 756 (800-1)	1700-1¼ 756 (800-1¼)	1700-2½	756 (800-2½)	BAKES FIX MINIMUMS (DME REQUIRED)					S-LOC 26L	1320/24	394 (400-½)	1320/35	394 (400-¾)
CATEGORY	A	B	C	D																																					
S-ILS 26L	1126/18 200 (200-½)																																								
S-LOC 26L	1700/24 774 (800-½)	1700/40 774 (800-¾)	1700-1¾ 768 (800-1¾)	1700-2 768 (800-2)																																					
SIDESTEP 26R	1700/55	768 (800-1)	1700-1¾ 768 (800-1¾)	1700-2 768 (800-2)																																					
C CIRCLING	1700-1 756 (800-1)	1700-1¼ 756 (800-1¼)	1700-2½	756 (800-2½)																																					
BAKES FIX MINIMUMS (DME REQUIRED)																																									
S-LOC 26L	1320/24	394 (400-½)	1320/35	394 (400-¾)																																					
TDZ/CL Rws 8L, 26L and 26R HIRL Rws 8L-26R and 8R-26L FAF to MAP 6.3 NM		<table border="1"> <thead> <tr> <th>Knots</th> <th>60</th> <th>90</th> <th>120</th> <th>150</th> <th>180</th> </tr> </thead> <tbody> <tr> <td>Min:Sec</td> <td>6:18</td> <td>4:12</td> <td>3:09</td> <td>2:31</td> <td>2:06</td> </tr> </tbody> </table>					Knots	60	90	120	150	180	Min:Sec	6:18	4:12	3:09	2:31	2:06																							
Knots	60	90	120	150	180																																				
Min:Sec	6:18	4:12	3:09	2:31	2:06																																				

SW-3, 20 FEB 2025 to 20 MAR 2025

SW-3, 20 FEB 2025 to 20 MAR 2025