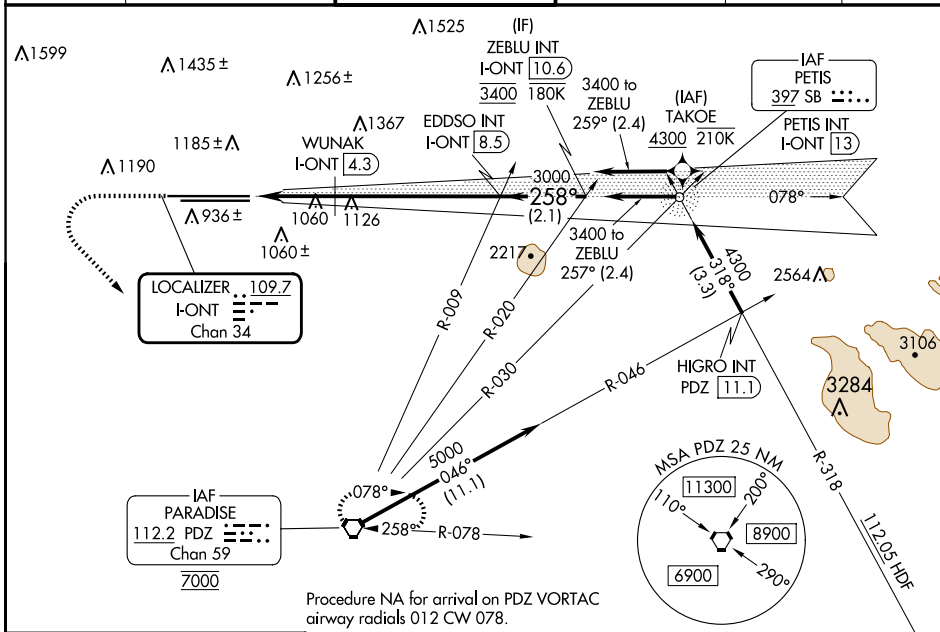


LOC/DME I-ONT 109.7 Chan 34	APP CRS 258°	Rwy Idg 26R 26L	TDZE 12197 932	10200 926
RNP APCH - GPS. From TAKOE.		Apt Elev 944	944	

ILS or LOC RWY 26R

ONTARIO INTL (ONT)

RNP APCH - GPS. From TAKOE. Circling NA north of Rwy 8L-26R. For inop ALS, increase S-LOC 26R Cat C and D visibility to 2 SM.		ALSF-2 Rwy 26R 	ALSF-2 Rwy 26L 	MISSED APPROACH: Climb to 2800 then climbing left turn to 5400 direct PDZ VORTAC and hold, continue climb-in-hold to 5400.
D-ATIS 124.25	SOCAL APP CON 127.0 318.2	ONTARIO TOWER 120.6 360.775	GND CON 121.9 257.8	CLNC DEL 132.9
CPDLC				



Procedure NA for arrival on PDZ VORTAC airway radials 012 CW 078.

ELEV 944	D	TDZE 26R 932 TDZE 26L 926	2800	5400	PDZ	VGSI and ILS glidepath not coincident (VGSI Angle 3.00/TCH 75).	ZEBLU INT I-ONT [10.6]
		WUNAK I-ONT [4.3]	I-ONT [2.2]	I-ONT [3.3]	I-ONT [2.2]	EDDSO INT I-ONT [8.5]	3000
TDZ/CL Rwys 8L, 26L and 26R HIRL Rwys 8L-26R and 8R-26L		1680	1.2 NM	1 NM	4.1 NM	2.1 NM	3400
FAF to MAP 6.3 NM		258°	CATEGORY	A	B	C	D
Knots 60 90 120 150 180 Min:Sec 6:18 4:12 3:09 2:31 2:06		258°	S-ILS 26R	1132/18 200 (200-½)			
		258°	S-LOC 26R	1680/24 748 (800-½)	1680/40 748 (800-¾)	1680-1¾ 754 (800-1¾)	748 (800-1¾)
		258°	SIDESTEP 26L	1680/55	754 (800-1)	1680-1¾ 754 (800-1¾)	1680-2 754 (800-2)
		258°	C CIRCLING	1680-1 736 (800-1)	1680-1¼ 736 (800-1¼)	1680-2¼ 736 (800-2¼)	1680-2½ 736 (800-2½)
		258°	WUNAK FIX MINIMUMS (DME REQUIRED)				
		258°	S-LOC 26R	1320/24	388 (400-½)	1320/35	388 (400-⅝)

SW-3, 20 FEB 2025 to 20 MAR 2025

SW-3, 20 FEB 2025 to 20 MAR 2025