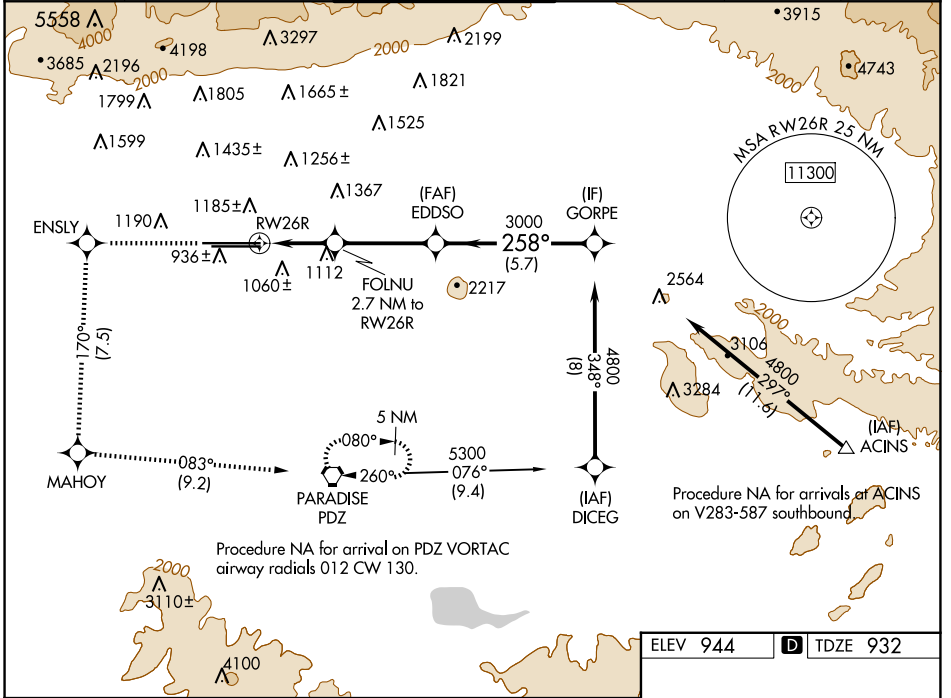


WAAS CH <b>53406</b> <b>W26A</b>	APP CRS <b>258°</b>	Rwy Idg <b>12197</b> TDZE <b>932</b> Apt Elev <b>944</b>
--	------------------------	--

# RNAV (GPS) Y RWY 26R

ONTARIO INTL (ONT)

RNP APCH - GPS.		ALSIF-2	MISSED APPROACH: Climb to 4700 direct ENSLY and on track 170° to MAHOY and on track 083° to PDZ VORTAC and hold, continue climb-in-hold to 4700.		
▼ Circling NA north of Rwy 8L-26R. For uncompensated Baro-VNAV systems, procedure NA below 2°C or above 54°C.					
D-ATIS <b>124.25</b>	SOCAL APP CON <b>127.0 318.2</b>	ONTARIO TOWER <b>120.6 360.775</b>	GND CON <b>121.9 257.8</b>	CLNC DEL <b>132.9</b>	CPDLC

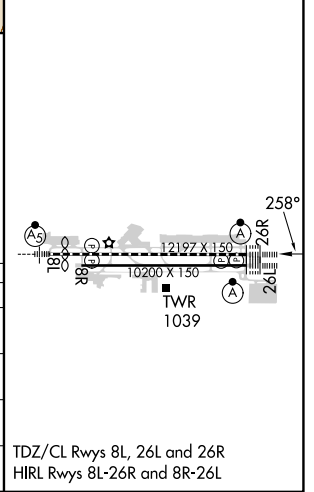


SW-3, 20 FEB 2025 to 20 MAR 2025

SW-3, 20 FEB 2025 to 20 MAR 2025

ELEV 944	<b>D</b> TDZE 932
----------	-------------------

4700	↑	ENSLY	tr 170°	MAHOY	tr 083°	PDZ	VGSI and RNAV glidepath not coincident (VGSI Angle 3.00/TCH 75).
							EDDSO
							GORPE
							3000
							4800
							258°
							3000
							1840
							GP 3.00°
							TCH 60
CATEGORY	A	B	C	D			
LPV DA	1132/18		200 (200-½)				
LNAV/VNAV DA	1267/55		335 (400-1)				
LNAV MDA	1380/24	448 (500-½)	1380/45	448 (500-¾)			
<b>C</b> CIRCLING	1400-1	456 (500-1)	1500-1½	556 (600-1½)	1540-2	596 (600-2)	



TDZ/CL Rwys 8L, 26L and 26R  
HIRL Rwys 8L-26R and 8R-26L