

WAAS CH 70329 W08A	APP CRS 078°	Rwy Idg 10200 TDZE 936 Apt Elev 944
--	------------------------	--

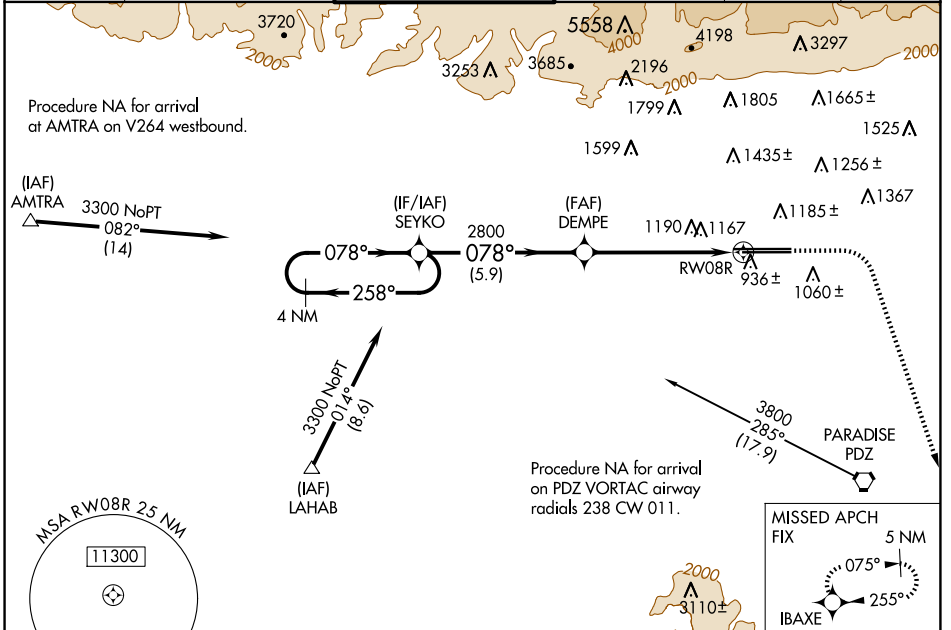
RNAV (GPS) Y RWY 8R

ONTARIO INTL (ONT)

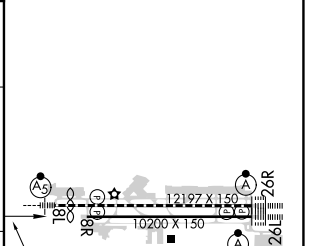
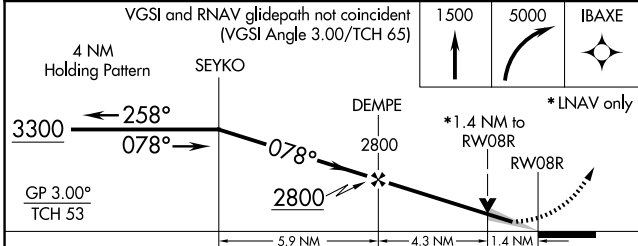
▽ For uncompensated Baro-VNAV systems, procedure NA below 2° C (36°F) or above 54°C (130°F). Circling NA north of Rwy 8L-26R. DME/DME RNP-0.3 NA.

MISSED APPROACH: Climb to 1500 then climbing right turn to 5000 direct IBAXE and hold, continue climb-in-hold to 5000.

D-ATIS 124.25	SOCAL APP CON 127.0 318.2	ONTARIO TOWER 120.6 360.775	GND CON 121.9 257.8	CLNC DEL 132.9	CPDLC
-------------------------	-------------------------------------	---------------------------------------	-------------------------------	--------------------------	-------



ELEV 944	D	TDZE 936
----------	----------	----------



CATEGORY	A	B	C	D
LPV DA	1220/45		284 (300-7%)	
LNAV/VNAV DA	1494-1 7/8		558 (600-1 7/8)	
LNAV MDA	1440/55 504 (500-1)		1440-1 3/8 504 (500-1 3/8)	
C CIRCLING	1440-1 496 (500-1)		1540-1 1/2 596 (600-1 1/2) 1600-2 656 (700-2)	

TDZ/CL Rwy 8L, 26R and 26L
HIRL Rwy 8L-26R and 8R-26L

SW-3, 20 FEB 2025 to 20 MAR 2025

SW-3, 20 FEB 2025 to 20 MAR 2025