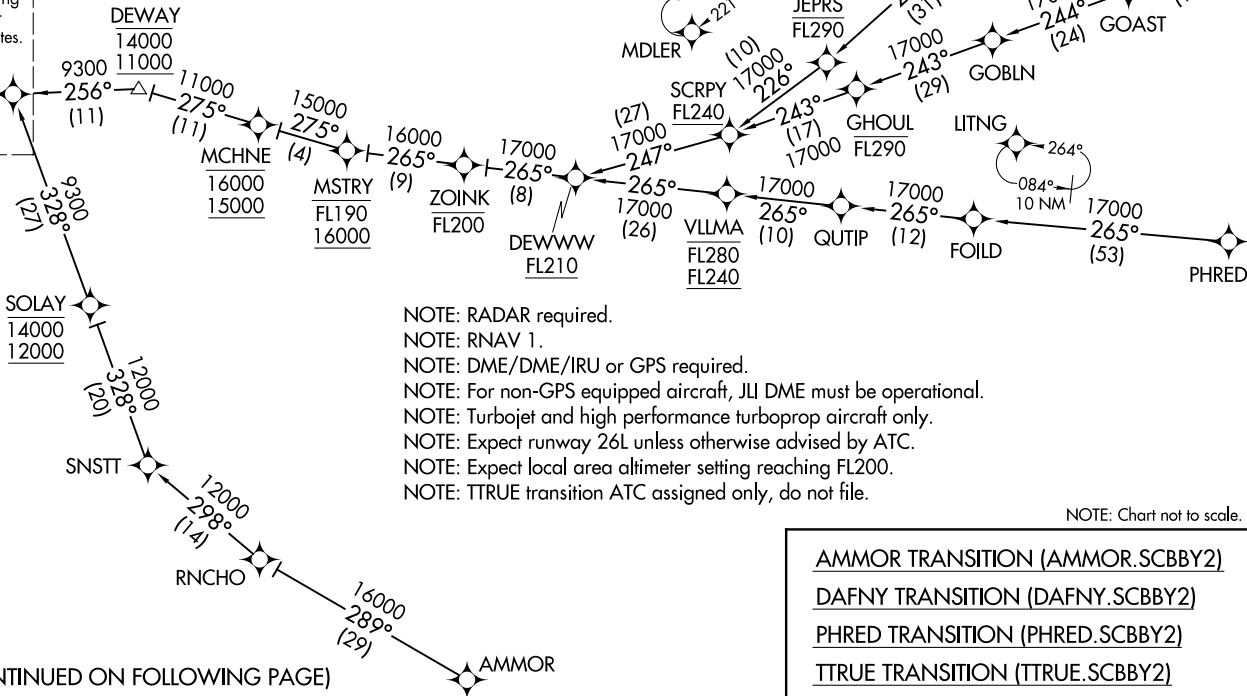


SOCAL APP CON  
134.0 278.3 (SE)  
126.7 370.95 (E)  
D-ATIS  
124.25  
ONTARIO TOWER  
120.6 360.775



See following page for Arrival Routes.

SCBBY  
11000  
9300



- NOTE: RADAR required.
- NOTE: RNAV 1.
- NOTE: DME/DME/IRU or GPS required.
- NOTE: For non-GPS equipped aircraft, JII DME must be operational.
- NOTE: Turbojet and high performance turboprop aircraft only.
- NOTE: Expect runway 26L unless otherwise advised by ATC.
- NOTE: Expect local area altimeter setting reaching FL200.
- NOTE: TTRUE transition ATC assigned only, do not file.

NOTE: Chart not to scale.

- AMMOR TRANSITION (AMMOR.SCBBY2)
- DAFNY TRANSITION (DAFNY.SCBBY2)
- PHRED TRANSITION (PHRED.SCBBY2)
- TTRUE TRANSITION (TTRUE.SCBBY2)

(CONTINUED ON FOLLOWING PAGE)

SCBBY TWO ARRIVAL (RNAV) Transition Routes  
(SCBBY.SCBBY2) 01FEB18

ONTARIO, CALIFORNIA  
ONTARIO INTL (ONT)

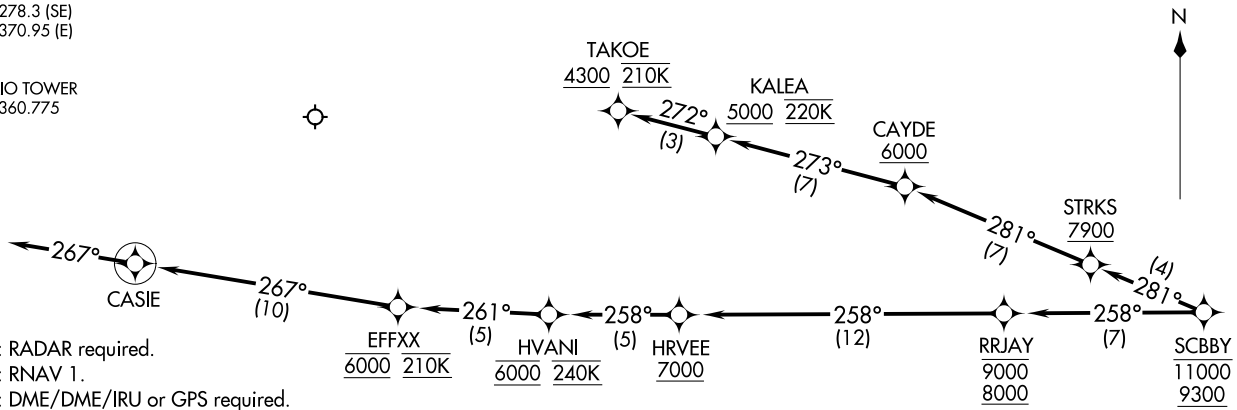
(SCBBY.SCBBY2) 18032

SCBBY TWO ARRIVAL (RNAV) Transition Routes  
AL-965 (FAA)

ONTARIO INTL (ONT)  
ONTARIO, CALIFORNIA

SCBBY TWO ARRIVAL (RNAV) Arrival Routes  
 (SCBBY:SCBBY2) 01FEB18

SOCAL APP CON  
 134.0 278.3 (SE)  
 126.7 370.95 (E)  
 D-ATIS  
 124.25  
 ONTARIO TOWER  
 120.6 360.775



NOTE: RADAR required.  
 NOTE: RNAV 1.  
 NOTE: DME/DME/IRU or GPS required.  
 NOTE: For non-GPS equipped aircraft, JLI DME must be operational.  
 NOTE: Turbojet and high performance turboprop aircraft only.  
 NOTE: Expect runway 26L unless otherwise advised by ATC.  
 NOTE: Expect local area altimeter setting reaching FL200.

NOTE: Chart not to scale.

ARRIVAL ROUTE DESCRIPTION

LANDING RUNWAYS 8L/R: From SCBBY on track 258° to cross RRJAY between 8000 and 9000, then on track 258° to cross HRVEE at or above 7000, then on track 258° to cross HVANI at 6000 and at 240K, then on track 261° to cross EFFXX at 6000 and at 210K, then on track 267° to CASIE, then on track 267°. Expect RNAV (RNP) Z RWY 8L approach or RADAR vectors to final approach course.

LANDING RUNWAYS 26L/R: From SCBBY on track 281° to cross STRKS at or above 7900, then on track 281° to cross CAYDE at or above 6000, then on track 273° to cross KALEA at or above 5000 and at 220K, then on track 272° to cross TAKOE at or above 4300 and at 210K. Expect assigned instrument approach or RADAR vectors to final approach course.

LOST COMMUNICATIONS

LANDING WEST: Proceed on the RNAV (RNP) Z RWY 26L approach or ILS or LOC RWY 26L approach.

LANDING EAST: Proceed on the RNAV (RNP) Z RWY 8L approach or ILS or LOC RWY 8L approach.

ONTARIO, CALIFORNIA  
 ONTARIO INTL (ONT)

(SCBBY:SCBBY2) 18032  
 SCBBY TWO ARRIVAL (RNAV) Arrival Routes

AL-965 (FAA)

ONTARIO INTL (ONT)  
 ONTARIO, CALIFORNIA