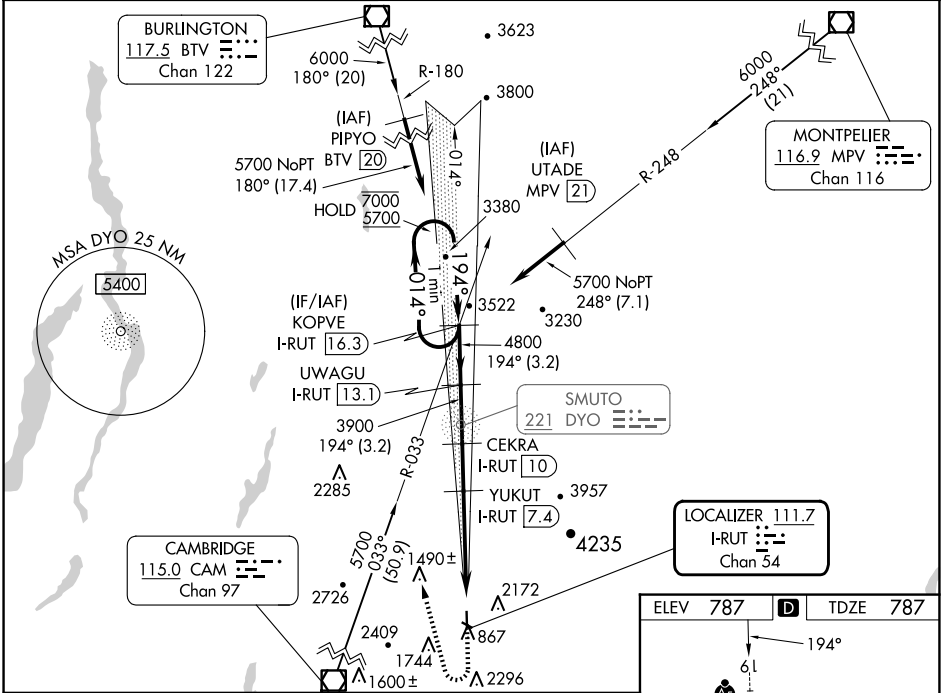


LOC/DME I-RUT 111.7 Chan 54	APP CRS 194°	Rwy ldg 5004 TDZE 787 Apt Elev 787
---	------------------------	---

ILS Y or LOC Y RWY 19

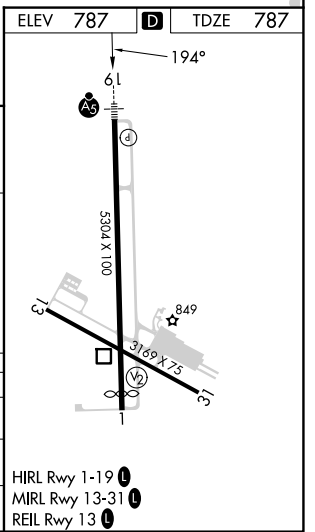
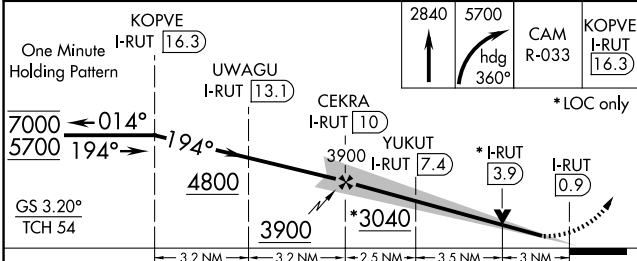
RUTLAND/SOUTHERN VERMONT RGNL (RUT)

DME required.		MALSR 	MISSED APPROACH: Climb to 2840 then climbing right turn to 5700 on heading 360° and CAM VOR/DME R-033 to KOPVE/I-RUT 16.3 DME and hold.
Circling to Rwy 13, 31 NA at night. Circling NA northeast of Rws 19 and 31. Inop table does not apply to S-ILS 19 all Cats, S-LOC 19 Cats C/D.	AWOS-3PT 118.375		



NE-1, 20 FEB 2025 to 20 MAR 2025

NE-1, 20 FEB 2025 to 20 MAR 2025



CATEGORY	A	B	C	D
S-ILS 19	2162-5 1375 (1400-5)			
S-LOC 19	2160-3/4 1373 (1400-3/4)	2160-1 1373 (1400-1)	2160-3 1373 (1400-3)	1373 (1400-3)
CIRCLING	2160-1 1/4 1373 (1400-1 1/4)	2160-1 1/2 1373 (1400-1 1/2)	2520-3 1733 (1800-3)	2760-3 1973 (2000-3)

HIRL Rwy 1-19 0
MIRL Rwy 13-31 0
REIL Rwy 13 0