

WAAS CH <b>93730</b> <b>W19B</b>	APP CRS <b>194°</b>	Rwy Idg TDZE <b>787</b> Apt Elev <b>787</b>	<b>5004</b>
--	------------------------	---	-------------

# RNAV (GPS) Z RWY 19

RUTLAND/SOUTHERN VERMONT RGNL (RUT)

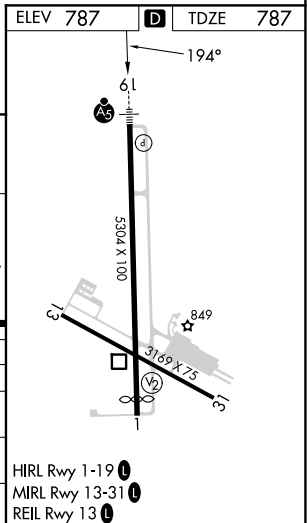
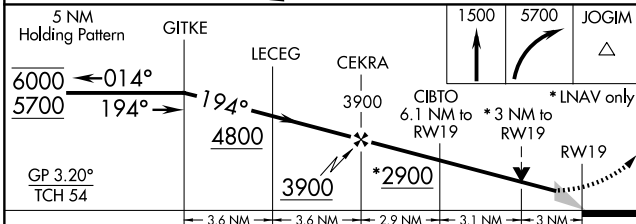
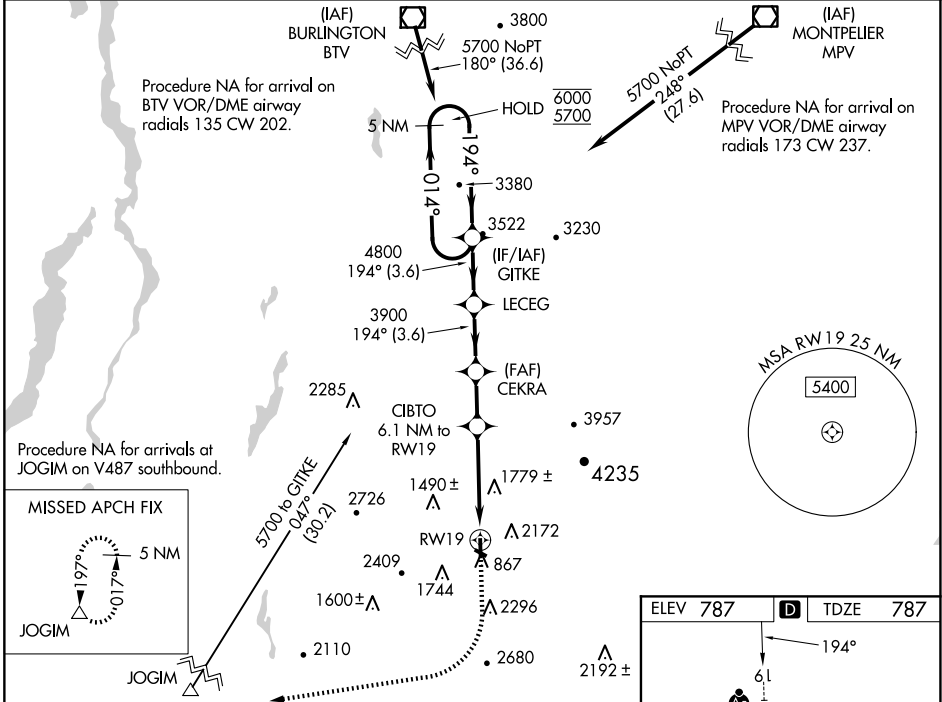
RNP APCH.

**⚠** Circling NA northeast of Rwy 19 and 31.  
**⚠** Circling Rwy 13, 31 NA at night.  
 Inop table does not apply to LNAV/VNAV all Cats.  
**❄** Baro-VNAV NA. For inop ALS, increase LPV all Cats  
 visibility to 1½ miles.

MALSRL

**⚠** MISSED APPROACH: Climb to 1500 then climbing  
 right turn to 5700 direct JOGIM and hold,  
 continue climb-in-hold to 5700.  
 † Missed approach requires minimum climb of  
 420 feet per NM to 3200; if unable to meet climb  
 gradient, see RNAV (GPS) Y Rwy 19.

AWOS-3PT <b>118.375</b>	BOSTON CENTER <b>135.7 282.2</b>	UNICOM <b>122.8 (CTAF) 0</b>
----------------------------	-------------------------------------	---------------------------------



CATEGORY	A	B	C	D
LPV DA†	1201-¾	414 (500-¾)		NA
LNAV/VNAV DA	2150-5	1363 (1400-5)		NA
LNAV MDA†	1820-¾ 1033 (1100-¾)	1820-1 1033 (1100-1)	1820-2½ 1033 (1100-2½)	NA
CIRCLING	2560-1¼ 1773 (1800-1¼)	2560-1½ 1773 (1800-1½)	2560-3 1773 (1800-3)	NA

NE-1, 20 FEB 2025 to 20 MAR 2025

NE-1, 20 FEB 2025 to 20 MAR 2025