

WAAS CH 69610 W03A	APP CRS 030°	Rwy Idg TDZE Apt Elev	5204 700 708
--	------------------------	-----------------------------	---

RNAV (GPS) RWY 3

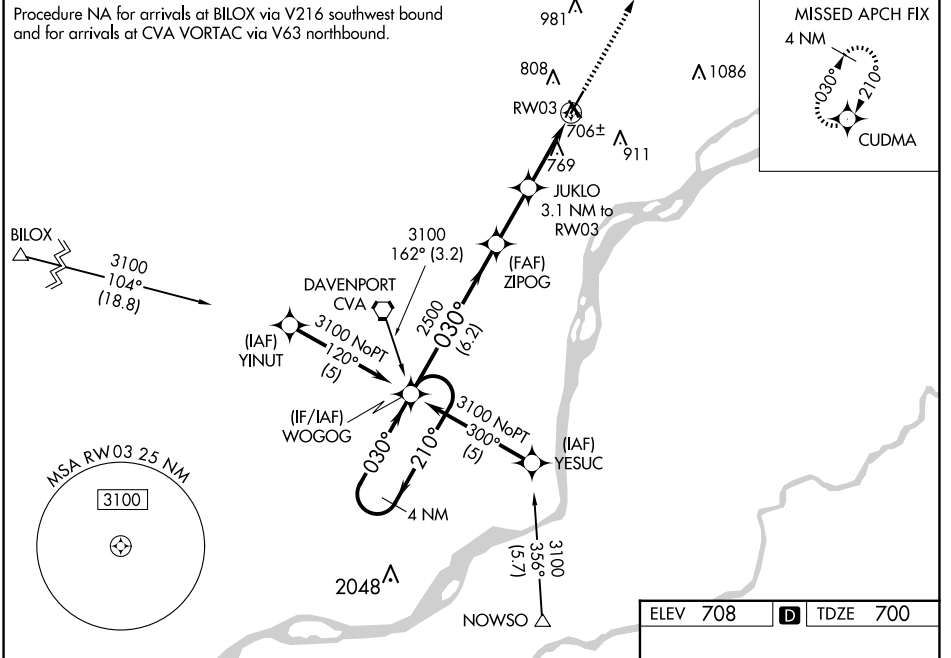
CLINTON MUNI (CWI)

⚠ For uncompensated Baro-VNAV systems, LNAV/VNAV NA below -16°C (4°F) or above 54°C (130°F). DME/DME RNP-0.3 NA. Baro-VNAV and VDP NA when using Davenport altimeter setting. When local altimeter setting not received, use Davenport altimeter setting and increase all DA 47 feet and all MDA 60 feet.



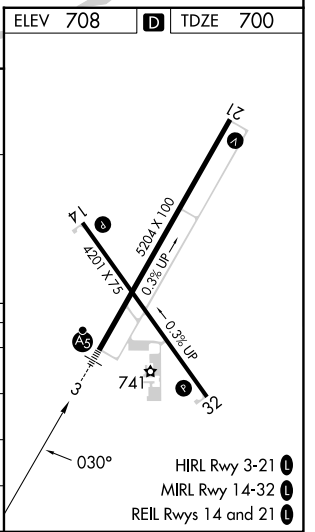
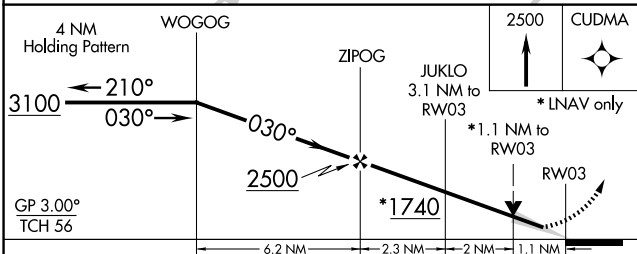
MISSED APPROACH: Climb to 2500 direct CUDMA and hold.

AWOS-3PT 125.525	QUAD CITY APP CON * 125.95 257.8	CLNC DEL 118.5	UNICOM 122.8 (CTAF)
----------------------------	--	--------------------------	-------------------------------



NC-3, 20 FEB 2025 to 20 MAR 2025

NC-3, 20 FEB 2025 to 20 MAR 2025



CATEGORY	A	B	C	D
LPV DA	900-½	200 (200-½)		NA
LNAV/VNAV DA	1039-¾	339 (400-¾)		NA
LNAV MDA	1020-½	320 (400-½)		NA
C CIRCLING	1140-1 432 (500-1)	1240-1 532 (600-1)	1240-1½ 532 (600-1½)	NA