

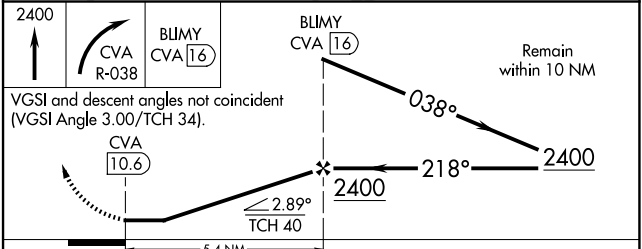
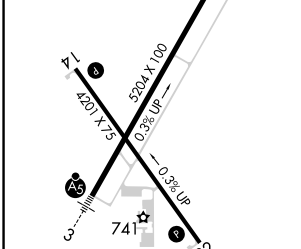
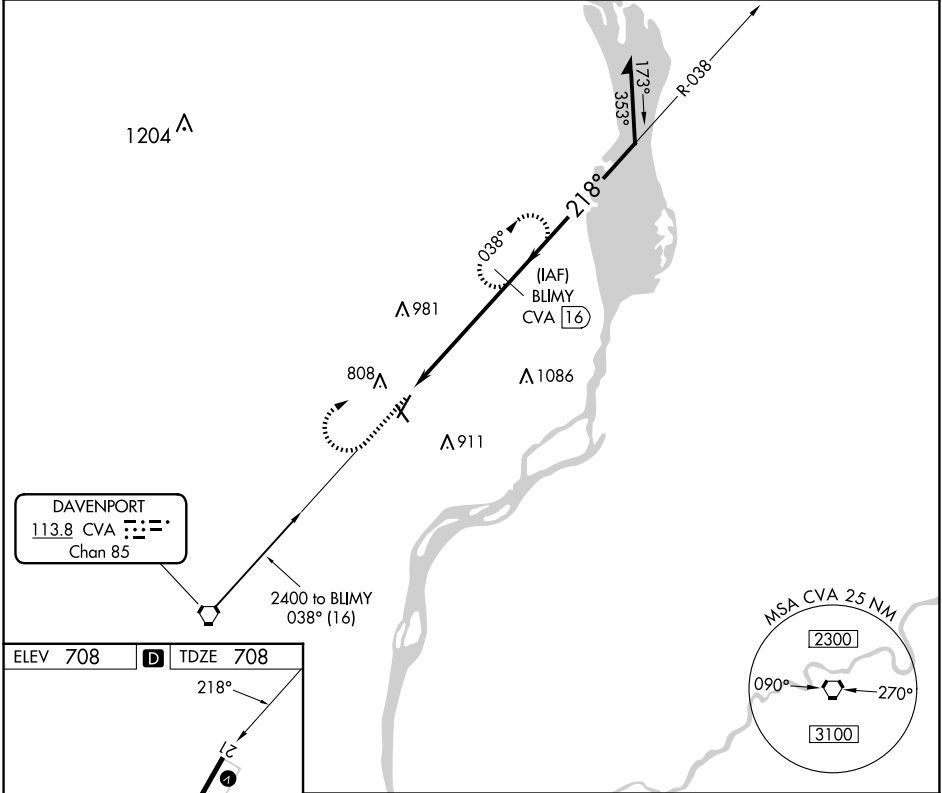
VORTAC CVA 113.8 Chan 85	APP CRS 218°	Rwy Idg TDZE Apt Elev	5204 708 708
--	------------------------	-----------------------------	---

VOR/DME RWY 21

CLINTON MUNI (CWI)

▼	Rwy 21 helicopter visibility reduction below 3/4 SM NA.	MISSED APPROACH: Climb to 2400 then right turn via R-038 to BLIMY 16 DME and hold.	
----------	---	--	--

AWOS-3PT 125.525	QUAD CITY APP CON * 125.95 257.8	CLNC DEL 118.5 0	UNICOM 122.8 (CTAF)
----------------------------	--	----------------------------	-------------------------------



CATEGORY	A	B	C	D
S-21	1200-1	492 (500-1)	1200-1¼ 492 (500-1¼)	NA
C CIRCLING	1200-1 492 (500-1)	1240-1 532 (600-1)	1240-1½ 532 (600-1½)	NA

REIL Rwy 14 and 21 **0**
MIRL Rwy 14-32 **0**
HIRL Rwy 3-21 **0**

NC-3, 20 FEB 2025 to 20 MAR 2025

NC-3, 20 FEB 2025 to 20 MAR 2025