

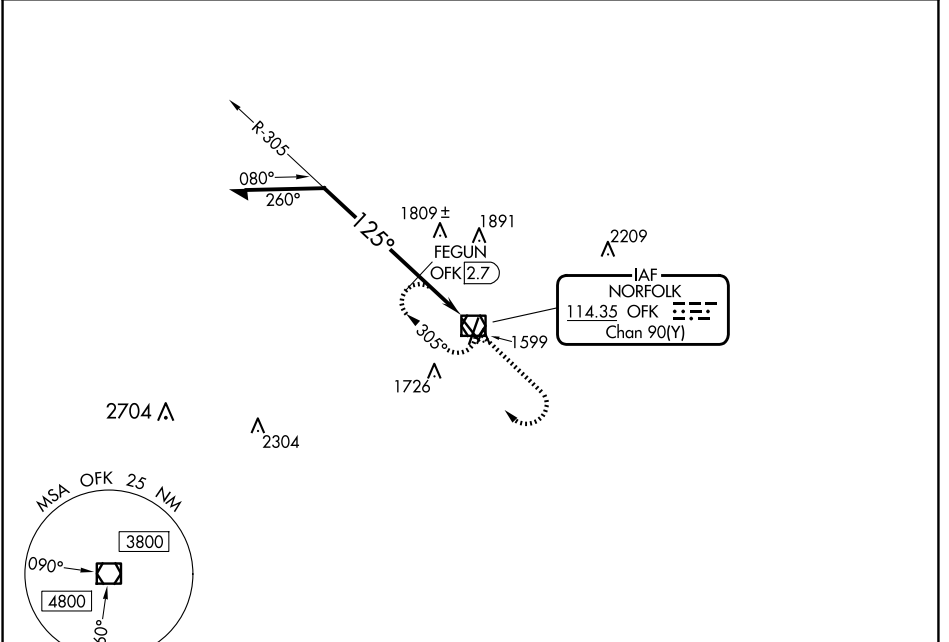
VOR/DME OFK <b>114.35</b> Chan <b>90(Y)</b>	APP CRS <b>125°</b>	Rwy Idg TDZE Apt Elev	<b>5160</b> <b>1543</b> <b>1573</b>
---	------------------------	-----------------------------	---

# VOR RWY 14

NORFOLK RGNL/KARL STEFAN MEML FLD (OFK)

<b>▽</b> <b>▲</b> Rwy 14 helicopter visibility reduction below 3/4 SM NA.	MISSED APPROACH: Climb to 3400 then right turn direct OFK VOR/DME and hold.
--	---

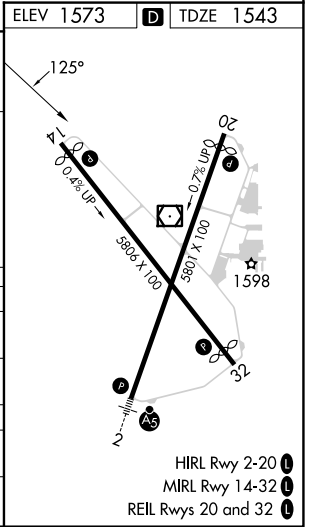
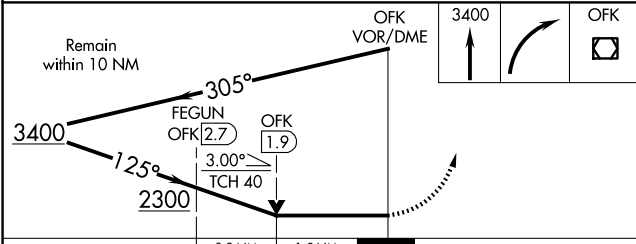
ASOS <b>119.025</b>	MINNEAPOLIS CENTER <b>125.025 235.625</b>	UNICOM <b>122.7 (CTAF) 0</b>
------------------------	--	---------------------------------



NC-2, 20 FEB 2025 to 20 MAR 2025

NC-2, 20 FEB 2025 to 20 MAR 2025

ELEV 1573	<b>D</b> TDZE 1543
-----------	--------------------



CATEGORY	A	B	C	D
S-14	2300-1 757 (800-1)	2300-1¼ 757 (800-1¼)	2300-2	757 (800-2)
<b>C</b> CIRCLING	2300-1 727 (800-1)	2300-1¼ 727 (800-1¼)	2300-2	2360-2½ 787 (800-2½)
FEGUN FIX MINIMUMS (DME REQUIRED)				
S-14	2060-1	517 (500-1)	2060-1⅓	517 (500-1⅓)
<b>C</b> CIRCLING	2060-1 487 (500-1)	2100-1 527 (600-1)	2260-2 687 (700-2)	2360-2½ 787 (800-2½)