

| | | | |
|--|------------------------|-----------------------------|---|
| WAAS CH 99615 W12A | APP CRS 125° | Rwy Idg TDZE Apt Elev | 5301 1128 1156 |
|--|------------------------|-----------------------------|---|

RNAV (GPS) RWY 12

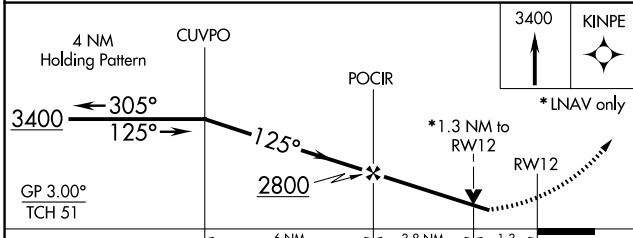
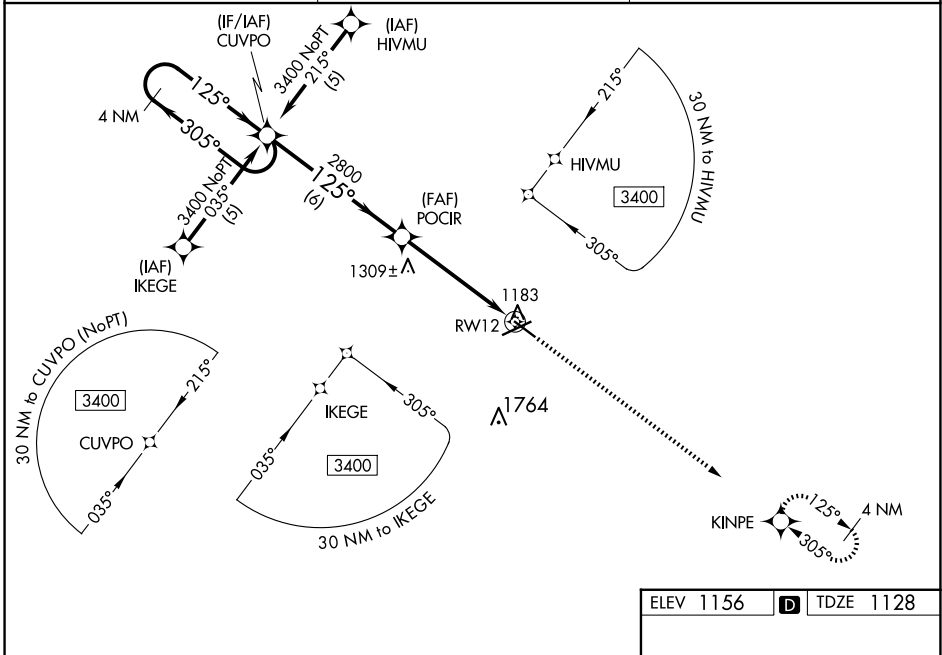
FORT DODGE RGNL (FOD)

RNP APCH.

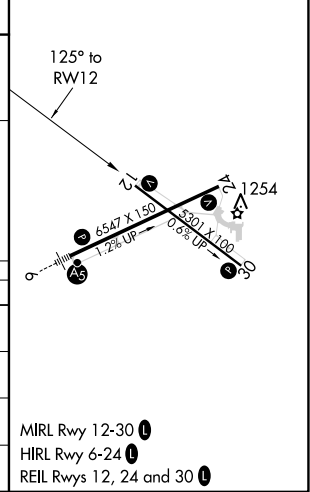
▼ For uncompensated Baro-VNAV systems, LNAV/VNAV NA below -17°C or above 54°C. Visibility reduction by helicopters NA. When local altimeter setting not received, use Webster City altimeter setting: increase LPV DA to 1447 feet and visibility all Cats ¼ SM; increase LNAV/VNAV DA to 1495 feet; increase all MDAs 60 feet and Circling Cat C visibility ¼ SM. VDP and Baro-VNAV NA when using Webster City altimeter setting.

MISSED APPROACH: Climb to 3400 direct KINPE and hold.

| | | |
|----------------------------|--|---------------------------------|
| AWOS-3PT 118.775 | MINNEAPOLIS CENTER 134.0 288.3 | UNICOM 123.0 (CTAF) 0 |
|----------------------------|--|---------------------------------|



| | | |
|-----------|---|-----------|
| ELEV 1156 | D | TDZE 1128 |
|-----------|---|-----------|



| CATEGORY | A | B | C | D |
|--------------|-----------------------|-----------------------|-------------------------|-------------------------|
| LPV DA | 1405-1 | | 277 (300-1) | |
| LNAV/VNAV DA | 1453-1¼ | | 325 (300-1¼) | |
| LNAV MDA | 1560-1 | 432 (500-1) | 1560-1½ 432 (500-1¼) | 1560-1½ 432 (500-1½) |
| CIRCLING | 1560-1 404 (500-1) | 1620-1 464 (500-1) | 1740-1½ 584 (600-1½) | 2080-3 924 (1000-3) |

MIRL Rwy 12-30 0
 HIRL Rwy 6-24 0
 REIL Rwy 12, 24 and 30 0

NC-3, 20 FEB 2025 to 20 MAR 2025

NC-3, 20 FEB 2025 to 20 MAR 2025