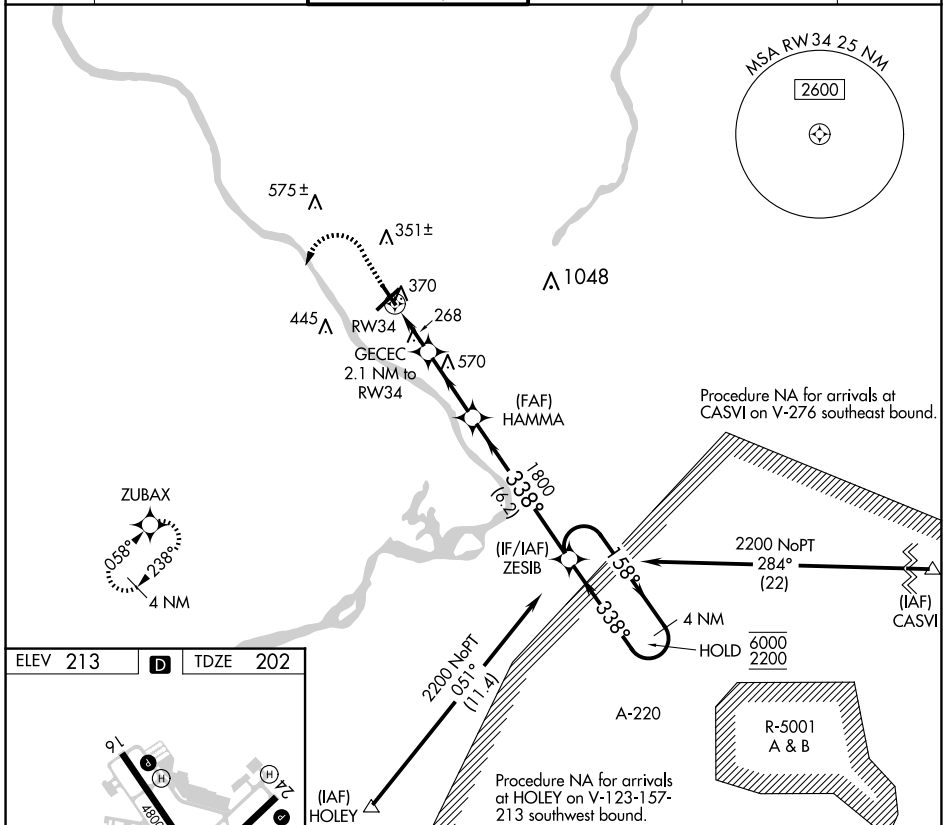


WAAS CH <b>40230</b> <b>W34A</b>	APP CRS <b>338°</b>	Rwy Idg TDZE Apl Elev	<b>4800</b> <b>202</b> <b>213</b>
--	------------------------	-----------------------------	---

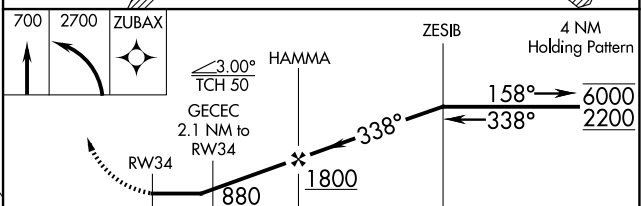
# RNAV (GPS) RWY 34

TRENTON MERCER (TTN)

RNP APCH.		MISSED APPROACH: (Do not exceed 250K until ZUBAX) Climb to 700 then climbing left turn to 2700 direct ZUBAX and hold.	
<p>▼ Rwy 34 helicopter visibility reduction below 1 SM NA. Straight-in Rwy 34 at night, operational ▲ VGSi required, remain on or above VGSi glidepath until threshold. When Circling to Rwy 34 at night, operational VGSi required, remain on or above VGSi glidepath until threshold.</p>			
ATIS <b>126.775</b>	PHILADELPHIA APP CON <b>123.8 291.7</b>	TRENTON TOWER ★ <b>120.7 (CTAF) 0 257.8</b>	GND CON <b>121.9 257.8</b>
		CLNC DEL <b>121.9 257.8</b>	UNICOM <b>122.95</b>



ELEV 213	D	TDZE 202
<p>HIRL Rwy 6-24 and 16-34 REL Rwy 16, 24 and 34</p>		



CATEGORY	A	B	C	D
LP MDA	520-1 318 (400-1)			
LNAV MDA	620-1	418 (500-1)	620-1 $\frac{3}{8}$	418 (500-1 $\frac{3}{8}$ )
CIRCLING	680-1 467 (500-1)		760-1 $\frac{1}{2}$	960-2 $\frac{1}{2}$
			547 (600-1 $\frac{1}{2}$ )	747 (800-2 $\frac{1}{2}$ )

NE-2, 20 FEB 2025 to 20 MAR 2025

NE-2, 20 FEB 2025 to 20 MAR 2025