

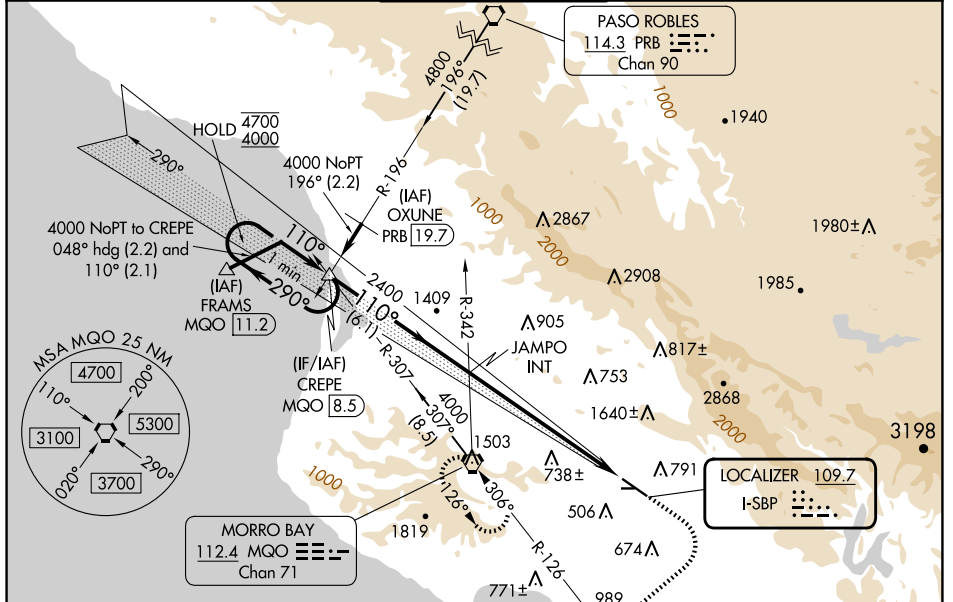
LOC I-SBP <b>109.7</b>	APP CRS <b>110°</b>	Rwy Idg <b>5300</b>
		TDZE <b>198</b>
		Apt Elev <b>212</b>

# ILS or LOC RWY 11

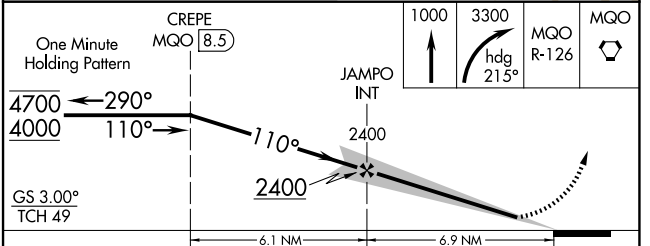
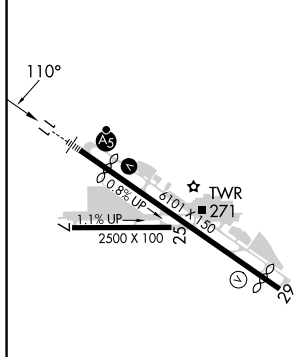
SAN LUIS OBISPO COUNTY RGNL (SBP)

<p><b>⚠</b> Circling Rwy 25 NA at night. Circling NA north of Rwy 11-29. Autopilot coupled approach NA below 677. For inop ALS, increase S-ILS 11 all Cats visibility to ¾ SM, S-LOC 11 Cat A visibility to 1/4 SM, Cat B visibility to 1/2 SM.</p>	<p><b>MALS</b>R</p>	<p><b>MISSED APPROACH:</b> Climb to 1000 then climbing right turn to 3300 on heading 215° and MQO VORTAC R-126 to MQO VORTAC and hold, continue climb-in-hold to 3300. S-ILS 11* missed approach requires minimum climb of 210 feet per NM to 1160.</p>
---	---------------------	---

ATIS <b>120.6</b>	SANTA BARBARA APP CON* <b>127.725 244.575</b>	SAN LUIS TOWER* <b>124.0 (CTAF) 0 379.9</b>	GND CON <b>121.6</b>	UNICOM <b>122.95</b>
----------------------	--	--	-------------------------	-------------------------



ELEV 212	<b>D</b>	TDZE 198
----------	----------	----------



CATEGORY	A	B	C	D
S-ILS 11*		398-1/2	200 (200-1/2)	
S-ILS 11		495-1/2	297 (300-1/2)	
S-LOC 11	1420-3/4 1222 (1300-3/4)	1420-1 1222 (1300-1)	1420-3	1222 (1300-3)
CIRCLING	1420-1 1/4 1208 (1300-1 1/4)	1420-1 1/2 1208 (1300-1 1/2)	1500-3 1288 (1300-3)	1760-3 1548 (1600-3)

REIL Rwy 29 **Ⓛ**  
HIRL Rwy 11-29 **Ⓛ**

FAF to MAP 6.9 NM

Knots	60	90	120	150	180
Min:Sec	6:54	4:36	3:27	2:46	2:18

SW-3, 20 FEB 2025 to 20 MAR 2025

SW-3, 20 FEB 2025 to 20 MAR 2025