

WAAS CH 53443	APP CRS 290°	Rwy Idg TDZE Apt Elev	5600 212 212
-------------------------	------------------------	-----------------------------	---

RNAV (GPS) RWY 29

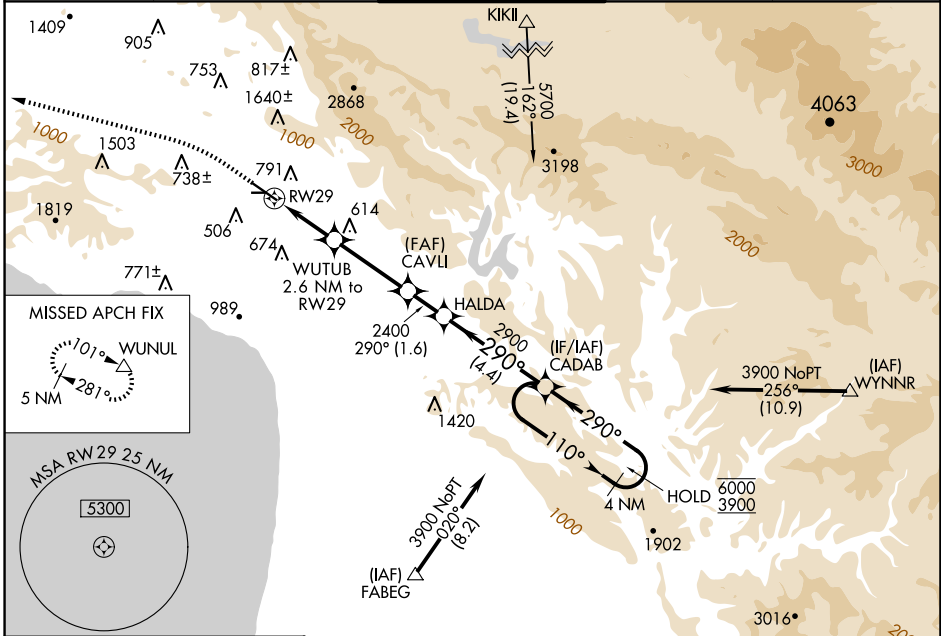
SAN LUIS OBISPO COUNTY RGNL (SBP)

RNP APCH

⚠ Circling to Rwy 25 NA at night. Circling NA north of Rwy 11-29.
⚠ Rwy 29 helicopter visibility reduction below 3/4 SM NA. For uncompensated Baro-VNAV systems, LNAV/VNAV NA below 0° C or above 52° C.

MISSED APPROACH: Climb to 1100 then climbing left turn to 4100 direct WUNUL and hold, continue climb-in-hold to 4100.

ATIS 120.6	SANTA BARBARA APP CON* 127.725 244.575	SAN LUIS TOWER* 124.0 (CTAF) 0 379.9	GND CON 121.6	UNICOM 122.95
----------------------	--	--	-------------------------	-------------------------

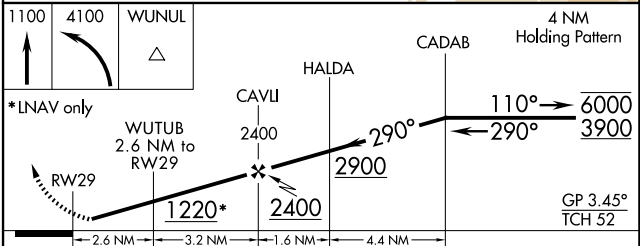


SW-3, 20 FEB 2025 to 20 MAR 2025

SW-3, 20 FEB 2025 to 20 MAR 2025

ELEV 212	D	TDZE 212
----------	----------	----------

Procedure NA for arrivals at FABEG on V27, T261 southeast bound.



CATEGORY	A	B	C	D
LPV DA		831-1 ³ / ₄	619 (700-1 ³ / ₄)	
LNAV/VNAV DA		835-1 ³ / ₄	623 (700-1 ³ / ₄)	
LNAV MDA	1000-1 788 (800-1)	1000-1 ¹ / ₄ 788 (800-1 ¹ / ₄)	1000-2 ¹ / ₂ 788 (800-2 ¹ / ₂)	788 (800-2 ¹ / ₂)
C CIRCLING	1000-1 788 (800-1)	1220-1 ¹ / ₂ 1008 (1100-1 ¹ / ₂)	1460-3 1248 (1300-3)	1560-3 1348 (1400-3)

