

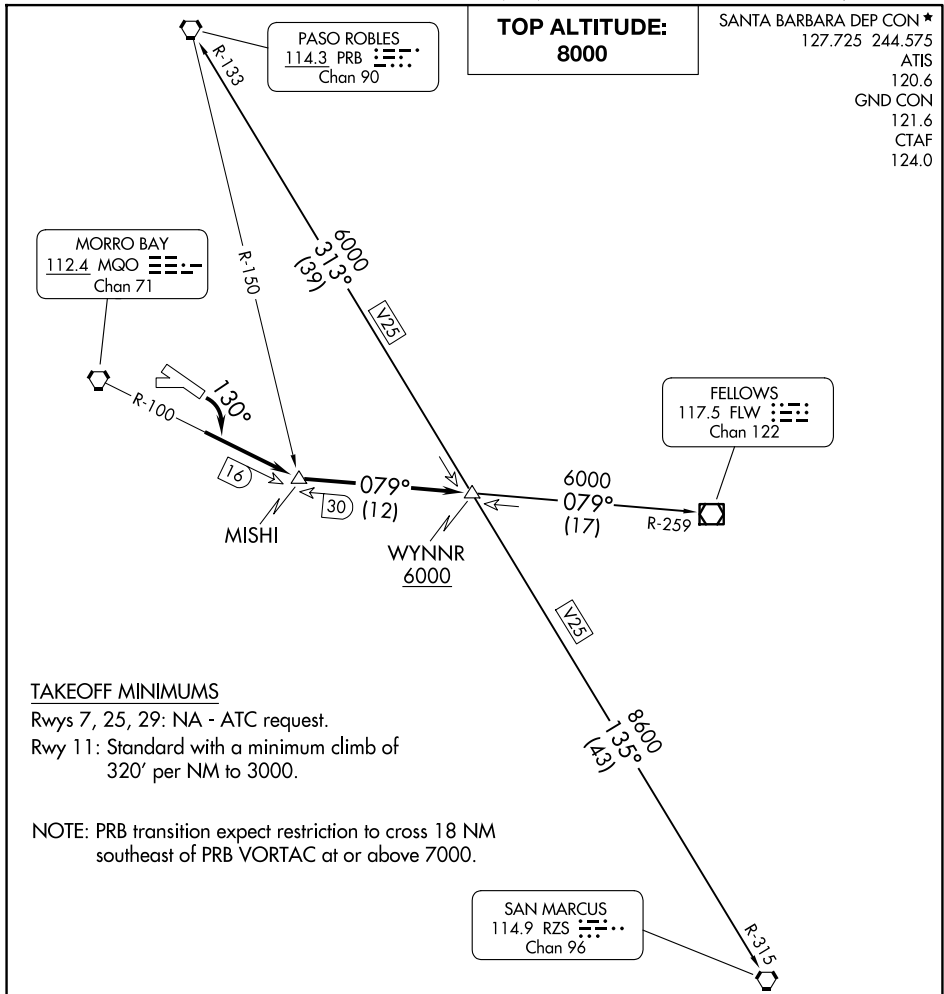
(WYNNR4.WYNNR) 25051

# WYNNR FOUR DEPARTURE

AL-989 (FAA)

SAN LUIS OBISPO COUNTY RGNL (SBP)

SAN LUIS OBISPO, CALIFORNIA



### TAKEOFF MINIMUMS

Rwys 7, 25, 29: NA - ATC request.

Rwy 11: Standard with a minimum climb of 320' per NM to 3000.

NOTE: PRB transition expect restriction to cross 18 NM southeast of PRB VORTAC at or above 7000.

### DEPARTURE ROUTE DESCRIPTION

**TAKEOFF RUNWAY 11:** Turn right heading 130° to intercept and proceed on MQO R-100 to MISHI INT, then on FLW R-259 to WYNNR INT; thence on (transition) or (assigned route.)

**FELLOWS TRANSITION (WYNNR4.FLW):** From over WYNNR INT on FLW R-259 to FLW VOR/DME.

**PASO ROBLES TRANSITION (WYNNR4.PRB):** From over WYNNR INT on PRB R-133 to PRB VORTAC.

**SAN MARCUS TRANSITION (WYNNR4.RZS):** From over WYNNR INT on RZS R-315 to RZS VORTAC.

# WYNNR FOUR DEPARTURE

(WYNNR4.WYNNR) 05NOV20

SAN LUIS OBISPO, CALIFORNIA  
SAN LUIS OBISPO COUNTY RGNL (SBP)

SW-3, 20 FEB 2025 to 20 MAR 2025

SW-3, 20 FEB 2025 to 20 MAR 2025