

WAAS CH <b>45917</b> <b>W32A</b>	APP CRS <b>319°</b>	Rwy Idg TDZE <b>24</b> Apr Elev <b>24</b>	<b>5608</b>
--	------------------------	---	-------------

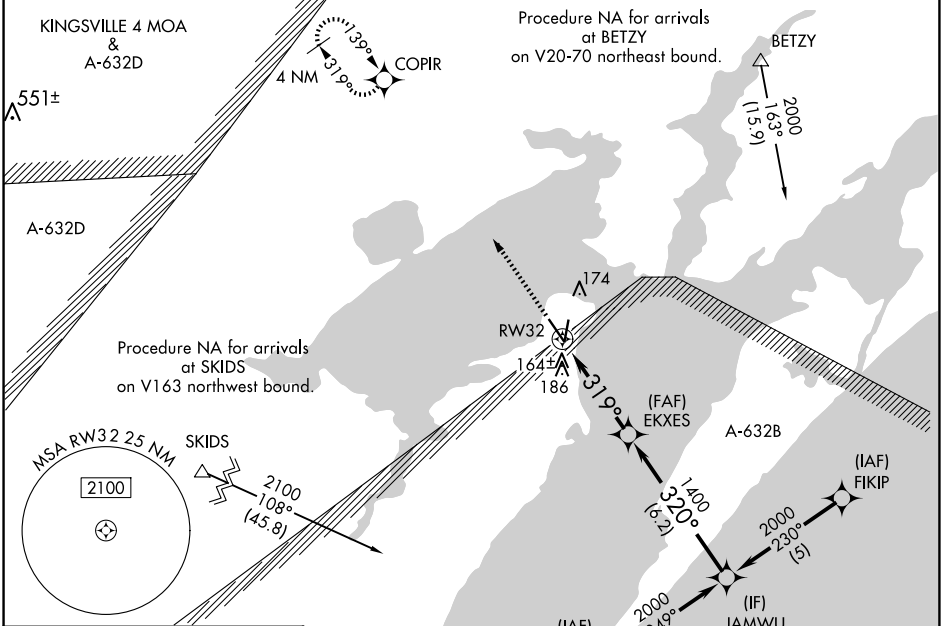
# RNAV (GPS) RWY 32

ARANSAS COUNTY (R.K.P)

**⚠** Baro-VNAV NA when using Ingleside altimeter setting. For uncompensated Baro-VNAV systems, LNAV/VNAV NA below -15°C (5°F) or above 54°C (130°F). DME/DME RNP-0.3 NA. Helicopter visibility reduction below ¾ SM NA. When local altimeter setting not received, use Ingleside altimeter setting and increase all DA 33 feet and all MDA 40 feet, increase LNAV Cat C visibility ¼ mile. VDP NA with Ingleside altimeter setting.

**MISSED APPROACH:**  
Climb to 2000 direct COPIR and hold.

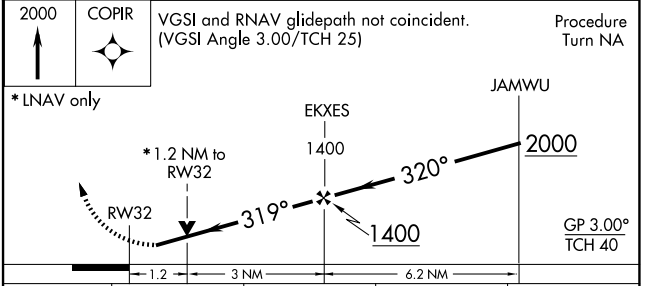
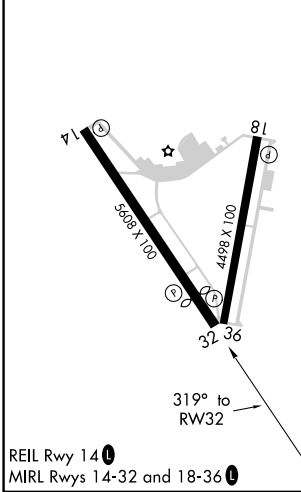
ASOS <b>119.275</b>	CORPUS APP CON <b>120.9 348.725</b>	CLNC DEL <b>121.7</b>	UNICOM <b>123.05 (CTAF) 0</b>
------------------------	--	--------------------------	----------------------------------



SC-3, 20 FEB 2025 to 20 MAR 2025

SC-3, 20 FEB 2025 to 20 MAR 2025

ELEV <b>24</b>	TDZE <b>24</b>
----------------	----------------



CATEGORY	A	B	C	D
LPV DA	274-1	250 (300-1)		NA
LNAV/VNAV DA	508-1¾	484 (500-1¾)		NA
LNAV MDA	420-1	396 (400-1)		NA
CIRCLING	500-1	476 (500-1)	500-1½ 476 (500-1½)	NA