

WAAS CH 61317 W36A	APP CRS 004°	Rwy Idg TDZE 23 Apt Elev 24	4498
--	------------------------	---	-------------

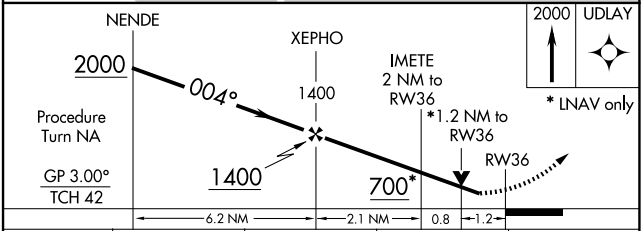
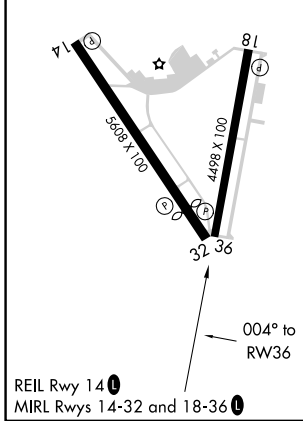
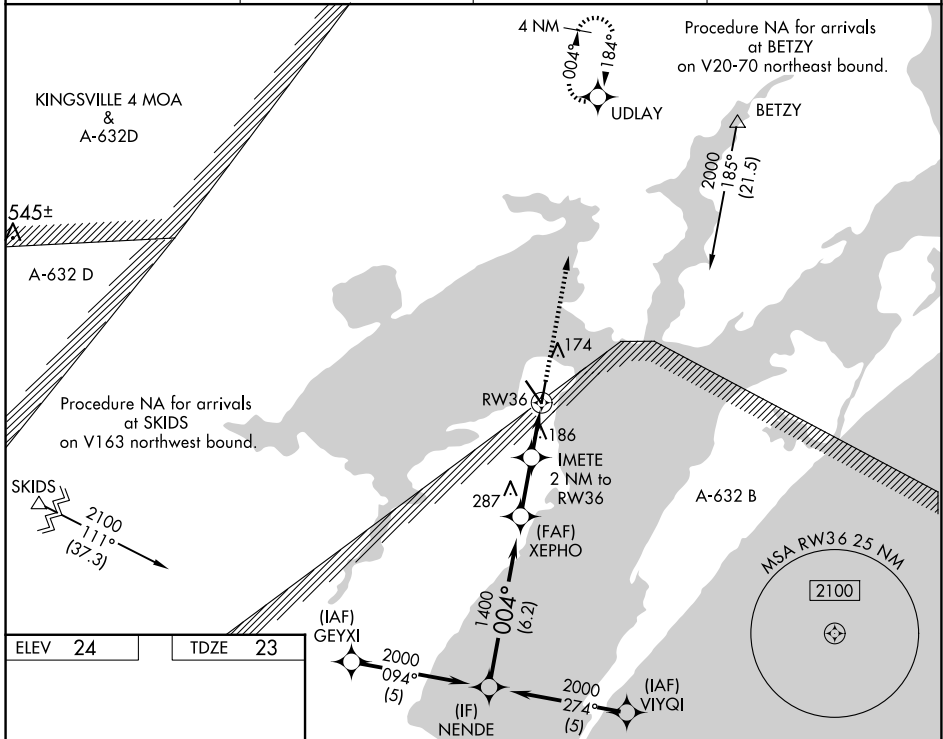
RNAV (GPS) RWY 36

ARANSAS COUNTY (RKP)

Baro-VNAV NA when using Ingleside altimeter setting. For uncompensated Baro-VNAV systems, LNAV/VNAV NA below -15°C (5°F) or above 54°C (130°F). DME/DME RNP-0.3 NA. Visibility reduction by helicopters NA. When local altimeter setting not received, use Ingleside altimeter setting and increase all DA 33 feet and all MDA 40 feet. VDP NA with Ingleside altimeter setting.

MISSED APPROACH: Climb to 2000 direct UDLAY and hold.

ASOS 119.275	CORPUS APP CON 120.9 348.725	CLNC DEL 121.7	UNICOM 123.05 (CTAF) ①
------------------------	--	--------------------------	----------------------------------



CATEGORY	A	B	C	D
LPV DA	273-1	250 (300-1)		NA
LNAV/VNAV DA	498-1¾	475 (500-1¾)		NA
LNAV MDA	440-1	417 (500-1)	440-1¼ 417 (500-1¼)	NA
CIRCLING	500-1	476 (500-1)	500-1½ 476 (500-1½)	NA

SC-3, 20 FEB 2025 to 20 MAR 2025

SC-3, 20 FEB 2025 to 20 MAR 2025