

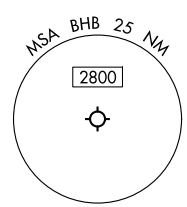
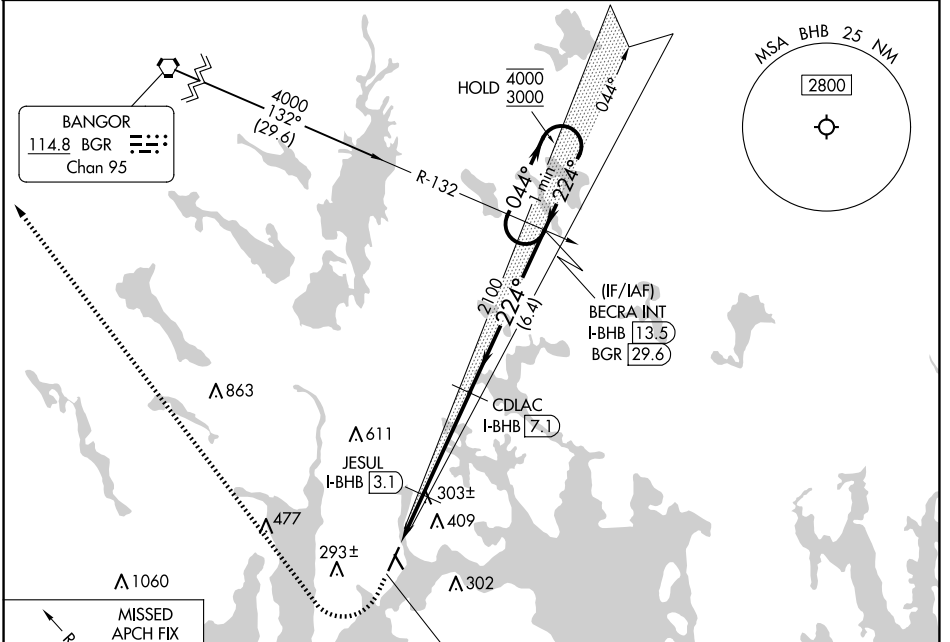
LOC/DME I-BHB 108.3 Chan 20	APP CRS 224°	Rwy Idg TDZE Apt Elev	5200 83 83
---	------------------------	-----------------------------	---------------------------------------

ILS or LOC RWY 22

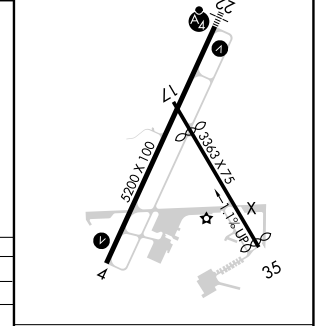
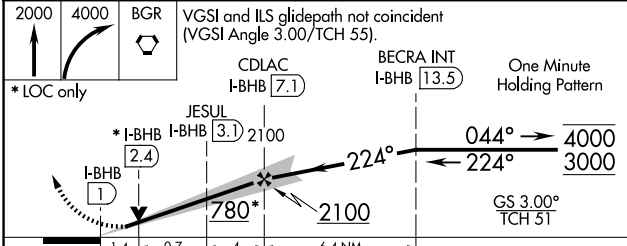
HANCOCK COUNTY/BAR HARBOR (BHB)

DME required.	MALSF	MISSED APPROACH: Climb to 2000 then climbing right turn to 4000 direct BGR VORTAC and hold.
<p>▼ Circling Rwy 17, 35 NA at night.</p> <p>▲ For inop ALS, increase S-LOC Cat C visibility to 1 3/8 SM. Autopilot coupled approach NA below 900 feet MSL.</p>		

AWOS-3PT 118.35	BANGOR APP CON 133.6 284.65	CLNC DEL 119.9	UNICOM 123.0 (CTAF)	122.7
---------------------------	---------------------------------------	--------------------------	-------------------------------	--------------



ELEV 83	TDZE 83
REIL Rwy 4	HIRL Rwy 4-22



CATEGORY	A	B	C	D
S-ILS 22		283-3/4	200 (200-3/4)	
S-LOC 22	580-3/4 497 (500-3/4)		580-1 1/4 497 (500-1 1/2)	580-1 1/2 497 (500-1 1/2)
CIRCLING	600-1 517 (600-1)	720-1 637 (700-1)	720-1 3/4 637 (700-1 3/4)	840-2 1/2 757 (800-2 1/2)

FAF to MAP 6.1 NM					
Knots	60	90	120	150	180
Min:Sec	6:06	4:04	3:03	2:26	2:02

NE-1, 20 FEB 2025 to 20 MAR 2025

NE-1, 20 FEB 2025 to 20 MAR 2025