

WAAS CH <b>56209</b> <b>W01A</b>	APP CRS <b>004°</b>	Rwy Idg TDZE <b>140</b> Apt Elev <b>141</b>	<b>5992</b>
--	------------------------	---	-------------

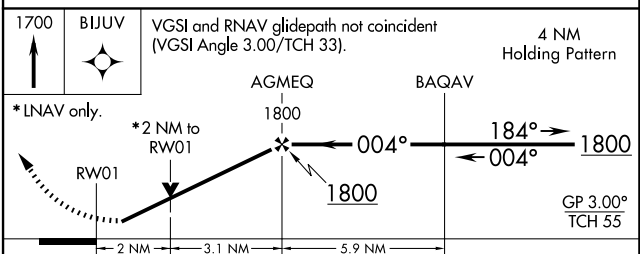
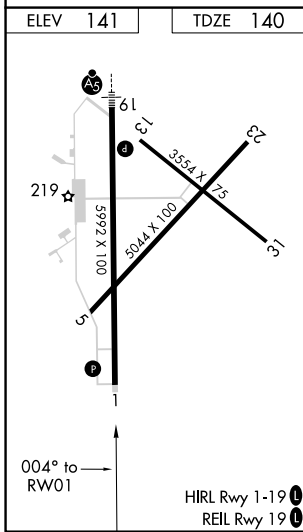
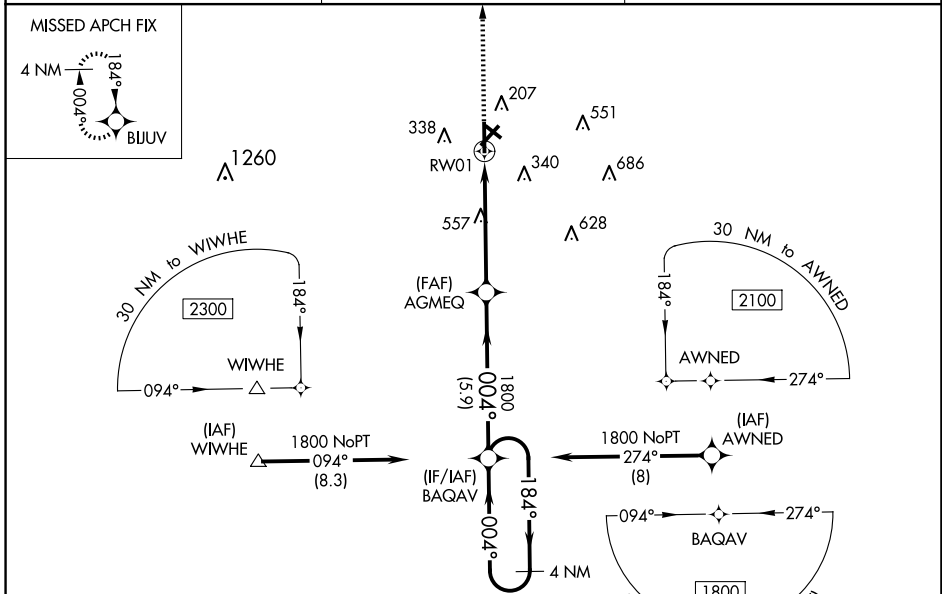
# RNAV (GPS) RWY 1

WAYCROSS-WARE COUNTY (A.Y.S)

**⚠** DME/DME RNP-0.3 NA. When local altimeter setting not received, use Alma altimeter setting and increase LPV DA to 473 feet and all visibilities 1/8 mile, LNAV/VNAV DA to 462 feet and all visibilities 1/8 mile; increase all MDA 60 feet and visibility Cats C and D 1/8 mile and Circling Cats C and D visibilities 1/4 mile. For uncompensated Baro-VNAV systems, LNAV/VNAV NA below -15°C (5°F) or above 54°C (130°F). Night Landing Rwy 5, 31 NA. VDP and Baro-VNAV NA when using Alma altimeter setting. Helicopter visibility reduction below 3/4 SM NA.

**⚠** MISSED APPROACH: Climb to 1700 direct BIJUV and hold.

AWOS-3 <b>118.575</b>	JACKSONVILLE CENTER <b>127.575 269.025</b>	UNICOM <b>122.8 (CTAF) 0</b>
--------------------------	---	---------------------------------



CATEGORY	A	B	C	D
LPV DA	423-7/8 283 (300-7/8)			
LNAV/VNAV DA	412-7/8 272 (300-7/8)			
LNAV MDA	820-1 680 (700-1)	820-17/8 680 (700-17/8)		
<b>CIRCLING</b>	820-1 679 (700-1)	860-2 719 (800-2)	860-2 1/4 719 (800-2 1/4)	

SE-4, 20 FEB 2025 to 20 MAR 2025

SE-4, 20 FEB 2025 to 20 MAR 2025